

3693TRM
Hand Shower Trim
Specification Submittal

Location:

Model Numbers

- 3693TRM**
Hand Shower Trim
- Valve Options:**
-261 Series Temptrol® Shower Valve with TRM modifier
-161 Series Temptrol Shower Valve requires TC modifier

Feature Highlights

- Duro Hand Shower Trim.
- Requires Temptrol Pressure-Balancing Shower Valve.
- Metal lever handle.
- 30" slide bar for hand shower wand.
- Dual checks for backflow protection.
- 60" flexible metal hose.
- Single-mode HydroMersion™ hand shower wand with Non-Positive Shutoff (NPSO).
- Standard 2.0 gpm (7.6 L/min) flow restrictor.
- Components shall be metal and nonmetal construction, plated in standard Polished Chrome finish.

Compliance

- ASME® A112.18.1/CSA® B125.1.
- WaterSense® 1.5 gpm (5.7 L/min) 2.0 gpm (7.6 L/min).
- Lever handle meets ADA requirements for operation.



Options/Modifications

- 15 **CG** 1.5 gpm (5.7 L/min) flow restrictor
- L2 Less hand shower wand
- L7 Less handle
- TC Test Cap Trim (includes TA-10™ & T-12A) *used with 161 Series Temptrol Shower Valve*
- BBZ Brushed Bronze finish
- MB Matte Black finish
- STN Satin Nickel finish

Warranty

Limited Lifetime - for residential installations.
10 Years - for commercial/industrial installations.
Refer to www.symmons.com/warranty for complete warranty information.



SKU Builder

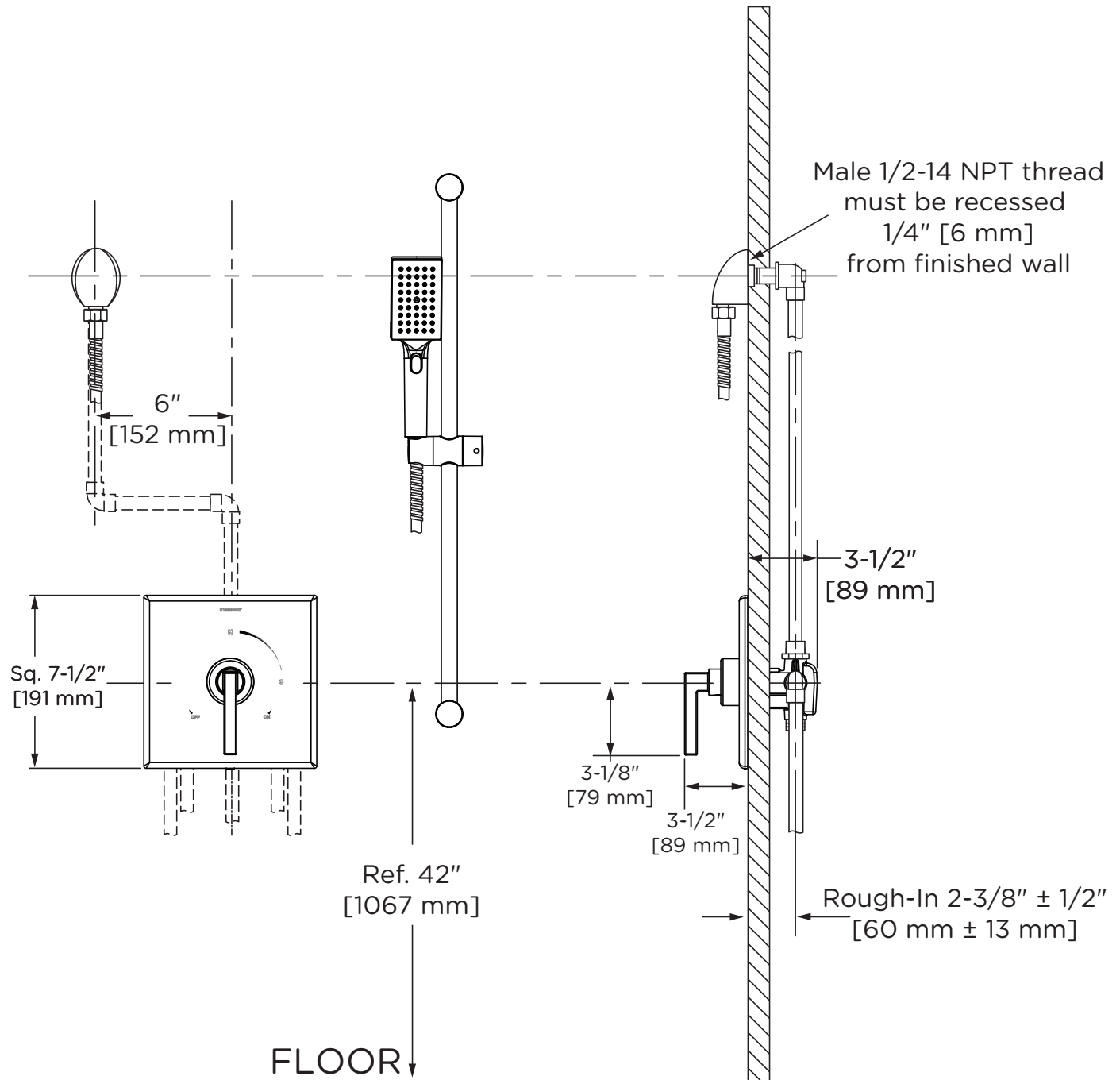
Series	Finish	Modifier	Flow Rate	TRM (required)	TC	Final SKU
3693	STN		15	TRM		3693STN15TRM
3693	MB	L2		TRM	TC	3693MBL2TRMTC

Notes: No more than two modifiers (L1-L7) permitted when ordering. Modifiers will list in numerical order.

Architectural/Engineering Specification

Symmons Duro Hand Shower Trim _____ Includes Duro Hand Shower Trim for Temptrol® Pressure-Balancing Shower Valve. Features metal lever handle, 30" slide bar for hand shower wand, dual checks for backflow protection 60" flexible metal hose, single-mode HydroMersion hand shower wand with NPSO, and standard 2.0 gpm (7.6 L/min) flow rate. Components shall be metal and nonmetallic construction, plated in standard Polished Chrome finish. 10-Year Commercial Warranty. ASME A112.18.1/CSA B125.1, WaterSense 1.5 gpm (5.7 L/min) and 2.0 gpm (7.6 L/min) compliant. Lever handle meets ADA requirements for operation. Available options: 15 = 1.5 gpm (5.7 L/min) flow restrictor, L2 = Less hand shower wand, L7 = Less handle, TC = Test Cap Trim, BBZ = Brushed Bronze finish, MB = Matte Black finish, and STN = Satin Nickel finish.

Dimensions



Notes:

- 1) Valve body and piping not included and shown as reference only.
- 2) Plaster shield (p/n T-176) for drywall, plaster, or other type walls 1/2" or greater.
- 3) All dimensions measured from nominal rough-in.
- 4) Dimensions subject to change without notice.