

3695TRM Shower/Hand Shower Trim Specification Submittal

Location:



Model Numbers

- ☐ **3695TRM**
Shower/Hand Shower Trim

Valve Options:

- 261 Series Temptrol® Shower Valve with TRM modifier
- 161 Series Temptrol Shower Valve requires TC modifier
- 2DIVBODYSTRT

Feature Highlights

- Duro Shower/Hand Shower Trim.
- Requires Temptrol Pressure-Balancing Shower Valve.
- Separate two-function diverter.
- 30" Slide bar.
- In-line vacuum breaker.
- 60" flexible metal hose.
- Single-mode HydroMersion™ showerhead.
- Single-mode HydroMersion hand shower wand with Non-Positive Shutoff (NPSO).
- Standard 2.0 gpm (7.6 L/min) flow restrictor.
- Components shall be metal and nonmetal construction, plated in standard Polished Chrome finish.

Compliance

- ASME® A112.18.1/CSA® B125.1
- WaterSense® 1.5 gpm (5.7 L/min) 2.0 gpm (7.6 L/min)
- Lever handle meets ADA requirements for operation



Modifications

- ☐ **15** 1.5 gpm (5.7 L/min) flow restrictor
- ☐ **TC** Test Cap Trim (includes TA-10™ & T-12A) *used with 161 Series Temptrol Shower Valve*
- ☐ **L1** Less showerhead
- ☐ **L2** Less hand shower (wand only)
- ☐ **L3** Less showerhead and hand shower (head and wand only)
- ☐ **L4** Less head, arm, and flange
- ☐ **L5** Less hand shower system
- ☐ **L7** Less handle
- ☐ **BBZ** Brushed Bronze finish
- ☐ **MB** Matte Black finish
- ☐ **STN** Satin Nickel finish

Warranty

Limited Lifetime - for residential installations.

10 Years - for commercial/industrial installations.

Refer to www.symmons.com/warranty for complete warranty information.



SKU Builder

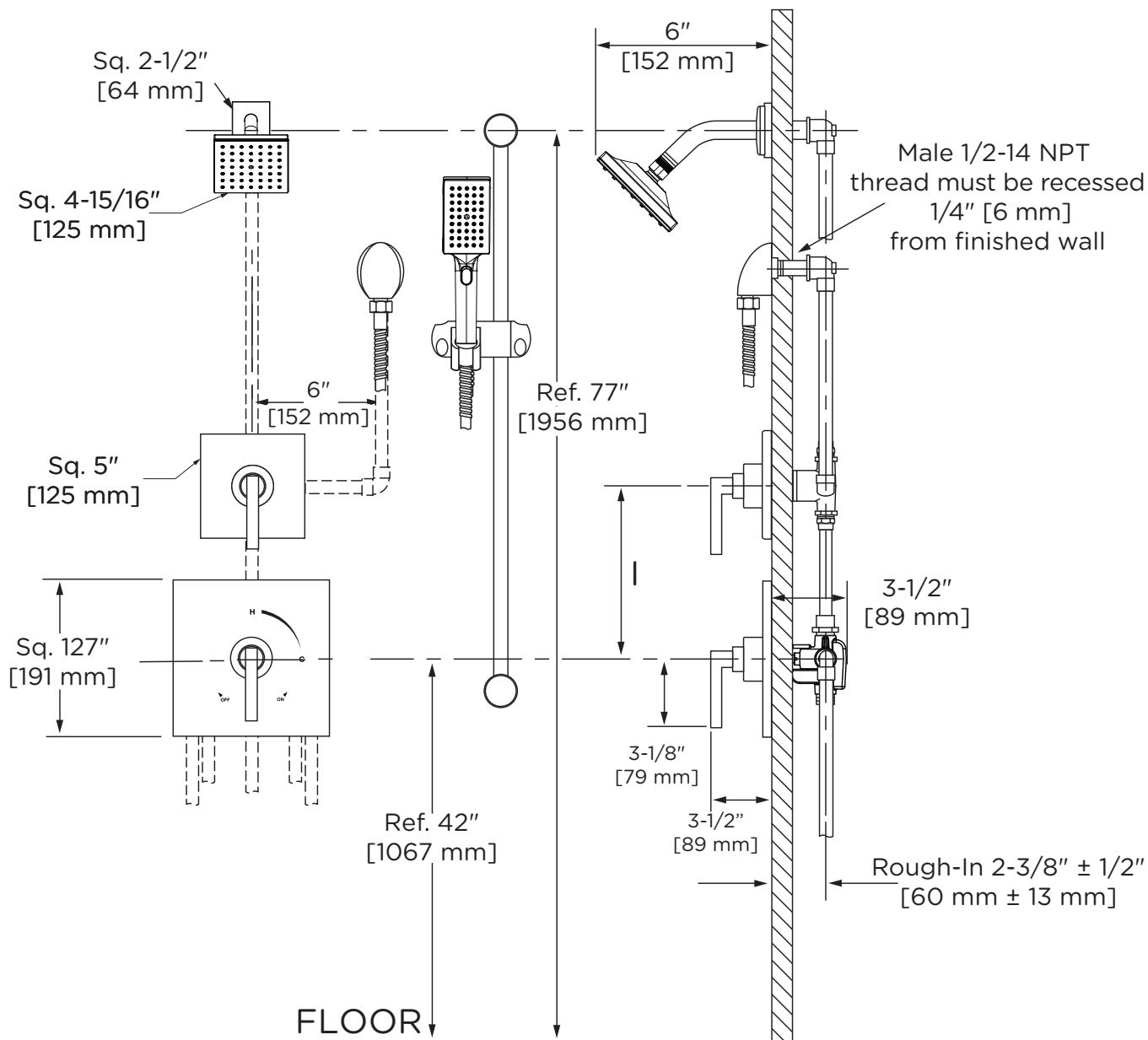
Series	Finish	Modifier	Flow Rate	Trim (required)	Test Cap	Final SKU
3695	STN			TRM		3695STNTRM
3695	MB	L3	15	TRM	TC	3695MBL315TRMTC

Notes: No more than two modifiers (L1-L7) permitted when ordering. Modifiers will list in numerical order.

Architectural/Engineering Specification

Symmons Duro Shower and Hand Shower System _____ Includes Duro Shower/Hand Shower System for Temptrol® Pressure-Balancing Shower Valve. Features 30" slide bar, in-line vacuum breaker, 60" flexible metal hose, single-mode HydroMersion hand shower with NPSO, single-mode HydroMersion showerhead, and standard 2.0 gpm (7.6 L/min) flow restrictors. Components made from metal and nonmetal materials plated in standard Polished Chrome finish. 10-Year Commercial Warranty. ASME A112.18.1/CSA B125.1, WaterSense 1.5 gpm (5.7 L/min) and 2.0 gpm (7.6 L/min) compliant. Lever handle meets ADA requirements for operation. Available options: 15 = 1.5 gpm (5.7 L/min) flow restrictor, L1 = Less showerhead, L2 = Less hand shower (wand only), L3 = Less showerhead and hand shower (head and wand only), L4 = Less head, arm, and flange, L5 = Less hand shower system, L7 = Less handle, BBZ = Brushed Bronze finish, MB = Matte Black finish, STN = Satin Nickel finish, and TC = Test Cap Trim.

Dimensions



Notes:

- 1) Valve body and piping not included and shown as reference only.
- 2) Plaster shield (p/n T-176) for drywall, plaster, or other type walls 1/2" or greater.
- 3) All dimensions measured from nominal rough-in.
- 4) Dimensions subject to change without notice.