


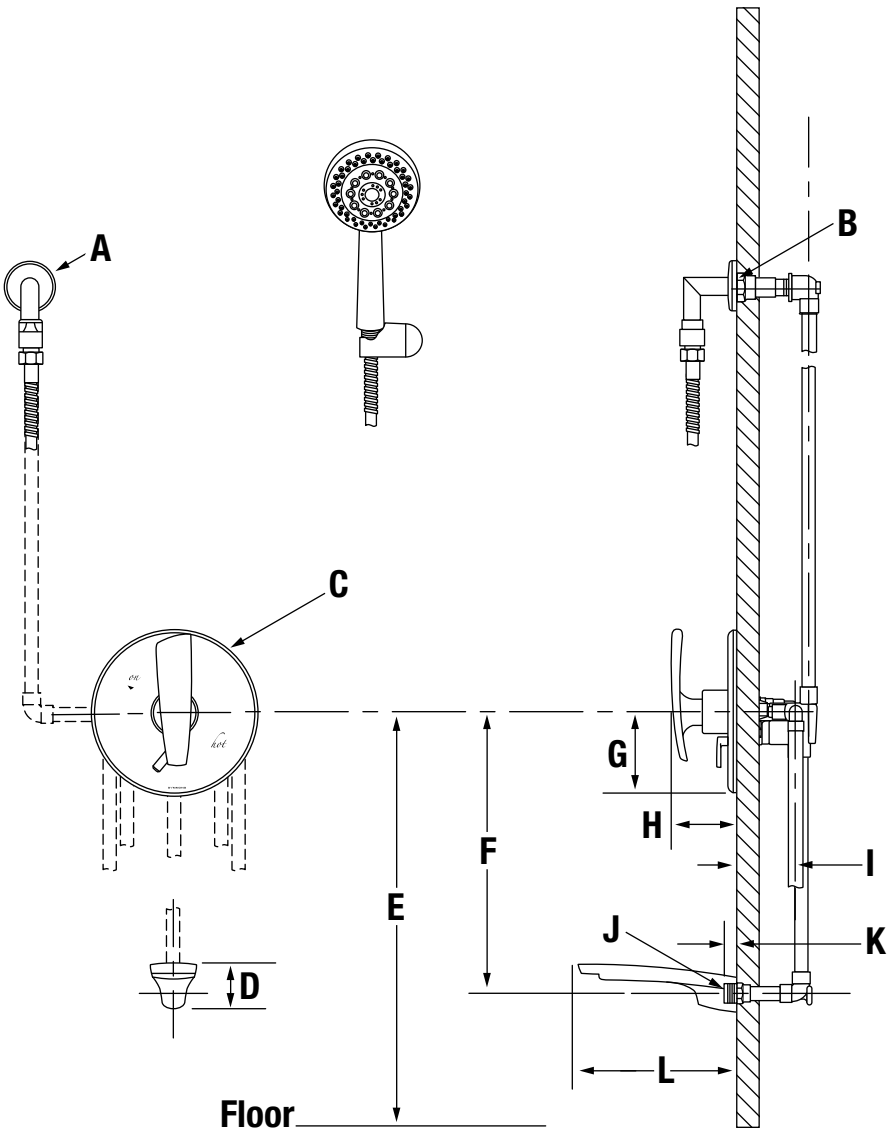


S-4104-TRM
Naru™ Tub/Hand Shower Trim
Operation & Maintenance Manual

Model Numbers	Specifications
<div><input type="checkbox"/> S-4104-TRM</div> <div><i>Tub/Hand Shower Trim</i></div>	<p>Tub/hand shower trim with lever handle and secondary integral diverter handle includes wall connection, cradle for hand shower mounting, non-diverter tub spout, in-line vacuum breaker, flexible metal hose and 3 mode hand shower with 2.5 gpm (9.5 L/min) flow restrictor. Components made from metal and nonmetallic materials plated in standard polished chrome finish.</p>
Modifications	Compliance
<div><input type="checkbox"/> -1.5</div> <div></div> <div><i>1.5 gpm (5.7 L/min) flow restrictor</i></div>	<div><div>-ASME A112.18.1; CSA B125.1</div><div></div></div>
<div><input type="checkbox"/> -2.0</div> <div></div> <div><i>2.0 gpm (7.6 L/min) flow restrictor</i></div>	
<div><input type="checkbox"/> -412HSB</div> <div><i>30" slide bar in place of wall cradle on hand shower units</i></div>	<div>Warranty</div> <div><p>Limited Lifetime - to the original end purchaser in consumer installations.</p><p>5 Years - for commercial installations.</p><p>Refer to www.symmons.com/warranty for complete warranty information.</p></div>
<div><input type="checkbox"/> -PNL</div> <div><i>Polished nickel finish</i></div>	
<div><input type="checkbox"/> -STN</div> <div><i>Satin nickel finish</i></div>	
<p>Note: Append appropriate -suffix to model number.</p>	

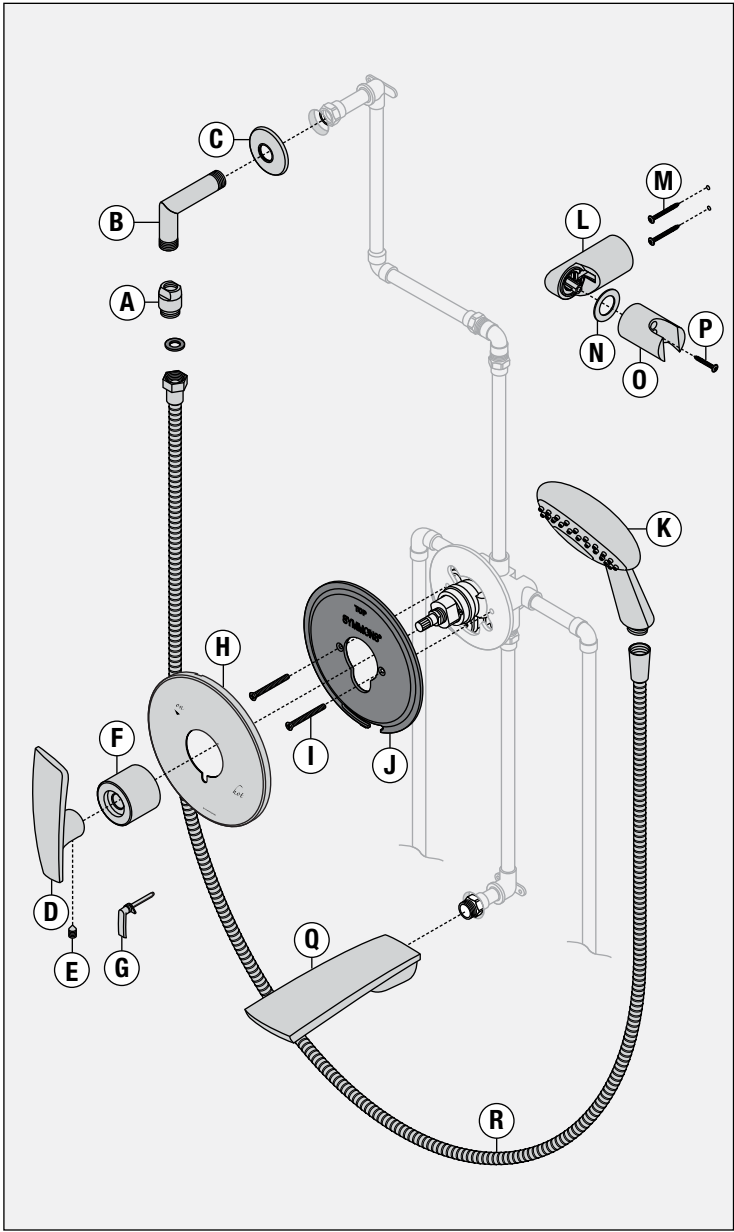
Dimensions



Measurements	
A	Ø 2 1/4", 57 mm
B	Female 1/2" IPS thread must be recessed 7/8" from finished wall
C	Ø 7 1/2", 191 mm
D	2 1/8", 54
E	32", 813 mm
F	12", 305 mm
G	2 1/4", 57 mm
H	3", 76 mm
I	(Rough in) 2 3/8" ± 1/2", 60 mm ± 13 mm
J	1/2" NPT
K	1/2", 13 mm
L	7 1/8", 181 mm


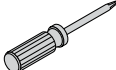


Notes:
1) All dimensions measured from nominal rough-in (see I as reference).
2) Dimensions are subject to change without notice.

Parts Breakdown



Replacement Parts		
Item	Description	Part Number
A R	Vacuum Breaker 60" Hose	EF-104
B C	Wall Elbow Wall Elbow Flange	T-444-KIT
D E	Handle Set Screw	T-567
F	Dome Cover	T-544
G	Diverter Handle	T-566
H I J	Shower Escutcheon Mounting Screws Mounting Plate	T-273A-NS-K002
K	Hand Shower	412W
L M N O P	Cradle Mount Cradle Mounting Screws Washer Cradle Arm Set Screw	T-545
Q	Tub Spout	412TS

- Notes:**
- 1) Append -PNL to part number for polished nickel finish; -STN for satin nickel.
 - 2) Append -1.5 or -2.0 to hand shower for low flow.

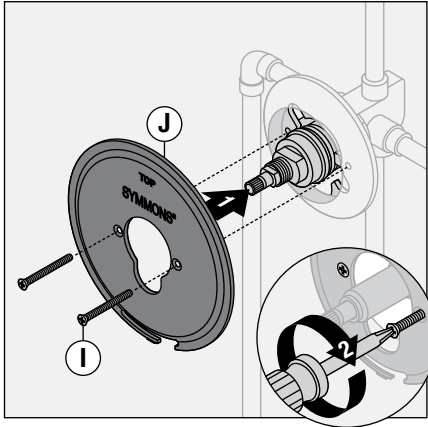
Required for Installation	
Adjustable wrench	
Phillips head screwdriver	
Allen wrench (1/8")	
Plumber tape	

Installation

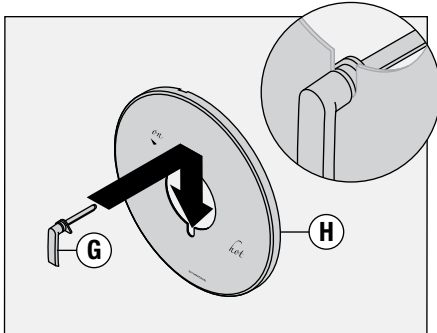
Note:

For valve body installation, please see valve body installation guide.

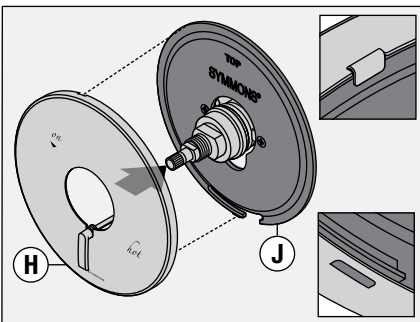
- 1) Install plastic mounting plate (J) to shower valve (S-4002-BODY). Secure with two screws (I).



- 2) Attach secondary integral diverter (G) to shower escutcheon (H).

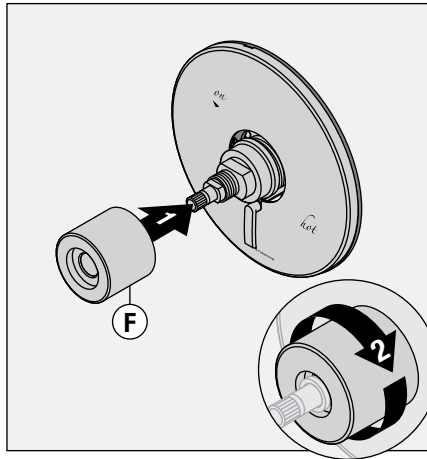


- 3) Attach shower escutcheon (H) to plastic mounting plate (J).

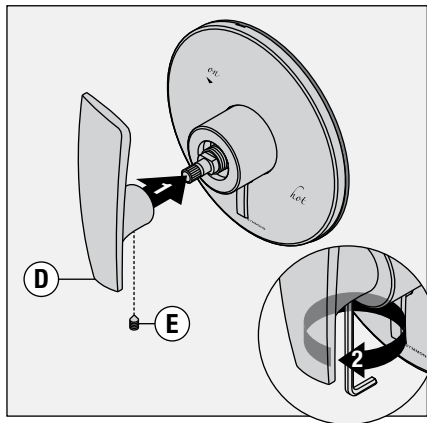


Note: Tabs should snap into place.

- 4) Install shower dome cover (F) to shower valve by turning clockwise.

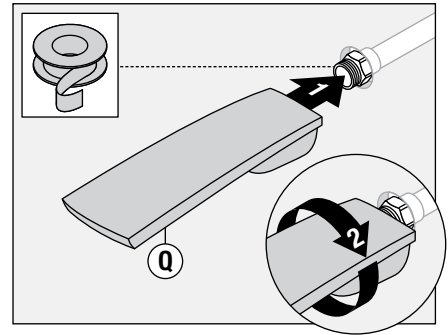


- 5) Install shower handle (D) to valve. Secure handle by tightening set screw (E).

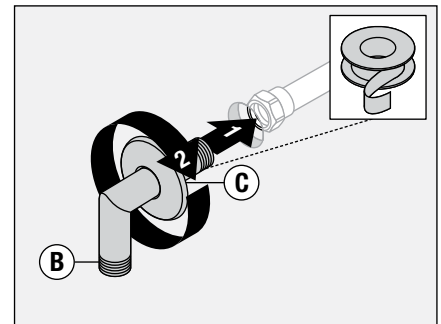


Note: Handle should be facing the 12 o'clock position.

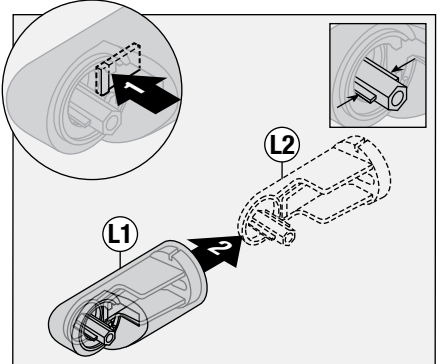
- 6) Install tub spout (Q) to pipe fitting. Turn clockwise to secure.



- 7) Install wall elbow (B) and flange (C) to recessed pipe fitting. Turn elbow clockwise to tighten.



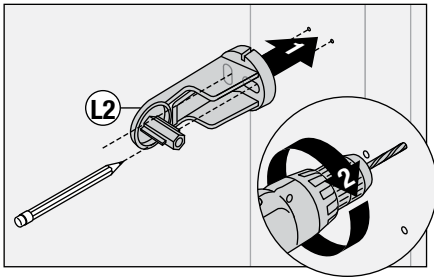
- 8) Press tab to remove mounting plate (L2) from cradle mount cover (L1).



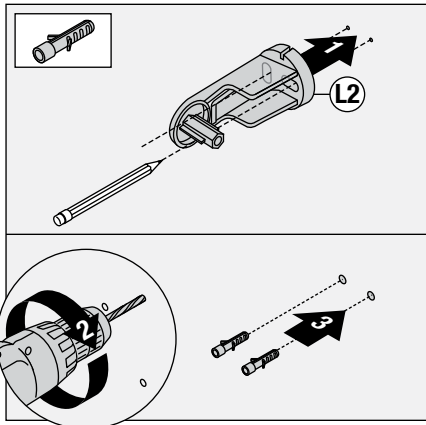
Note: Mounting plate (L2) center tabs must be horizontal for removal.

Installation

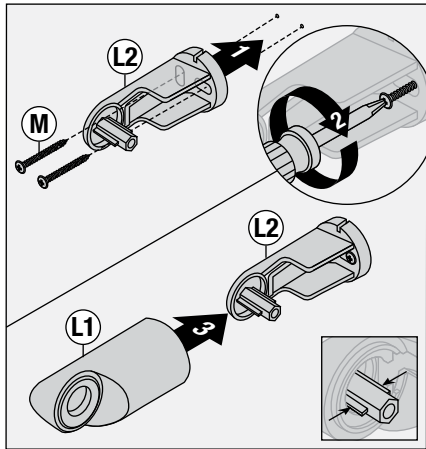
- 9) Place mounting plate (L2) in position, mark and drill 1/8" pilot holes into stud.



Option: Place mounting plate (L2) in position, mark and drill 3/16" holes into wall. Install anchors.

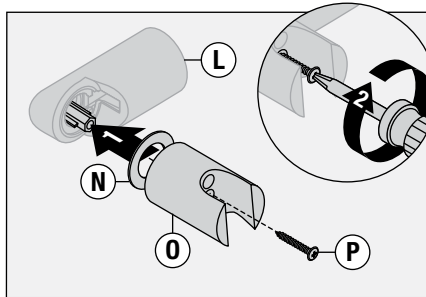


- 10) Install mounting plate (L2). Secure with two screws (M). Replace cradle mount cover (L1).

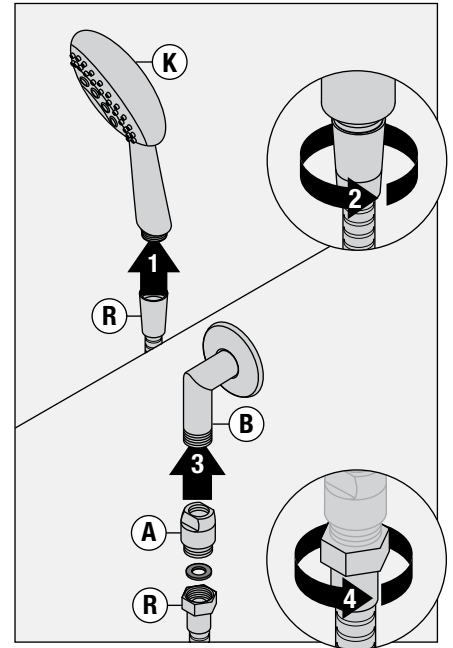


Note: Mounting plate (L2) center tabs must be horizontal for installation.

- 11) Attach cradle arm (O) and washer (N) to cradle mount (L). Secure with set screw (P).



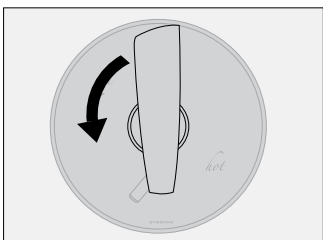
- 12) Attach large end of hand shower hose (R) to hand shower (K). Attach small end of hand shower hose (R) and gas-ket to in-line vacuum breaker (A). Connect in-line vacuum breaker to wall elbow (B). Turn clockwise to tighten.



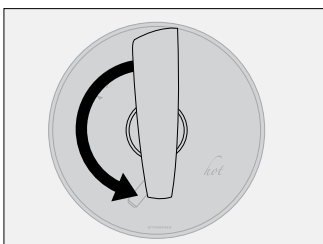
Operation

Temperature Control

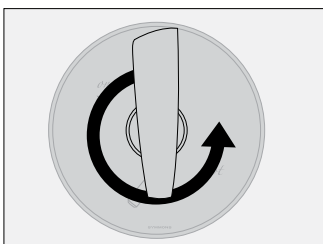
- 1) Turn shower handle counterclockwise approximately 1/4 turn to put valve in cold position.



- 2) Turn shower handle counterclockwise approximately 1/2 turn to put valve in warm position.

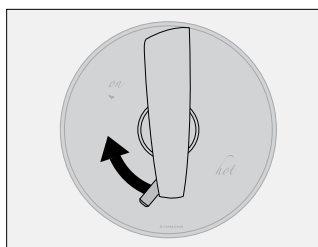


- 3) Turn shower handle counterclockwise approximately 3/4 turn to put valve in hot position.

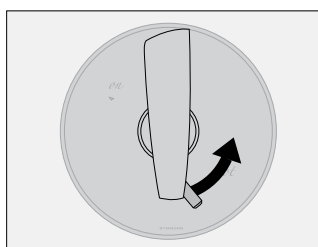


Diverter Control

- 1) Turn diverter left for tub spout operation.



- 2) Turn diverter right for hand shower operation.



Care and Cleaning

- 1) Clean finished trim area with a soft cloth using mild soap and water or a non-abrasive cleaner and then quickly rinse with water.

Troubleshooting Chart

Problem	Cause	Solution
Finish is spotting.	Elements in water supply may cause water staining on finish.	Clean finished trim area with a soft cloth using mild soap and water or a non-abrasive cleaner and then quickly rinse with water.