



SLC4712PP  
Lavatory Faucet  
**Operation & Maintenance Manual**



## Model Numbers

- ☐ **SLC4712PP**      Centerset Lavatory Faucet with Push Pop Drain Assembly

## Compliance

- ASME A112.18.1/CSA B125.1
- NSF/ANSI/CAN 61: Q<1, NSF/ANSI 372
- WaterSense 1.0 gpm



**⚠ WARNING:** This product can expose you to chemicals including lead, which is known to the state of California to cause cancer, birth defects, or other reproductive harm. For more information, go to [www.P65Warnings.ca.gov](http://www.P65Warnings.ca.gov).

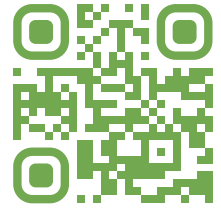
## Feature Highlights

- Two handle 4 inch centerset lavatory faucet with quarter turn ceramic components
- Solid Brass Construction
- Lever handles with red & blue indicators
- 1/2 inch IPS shanks
- Aerator with standard 1.0 gpm flow rate (3.8 L/min)
- Polished chrome finish

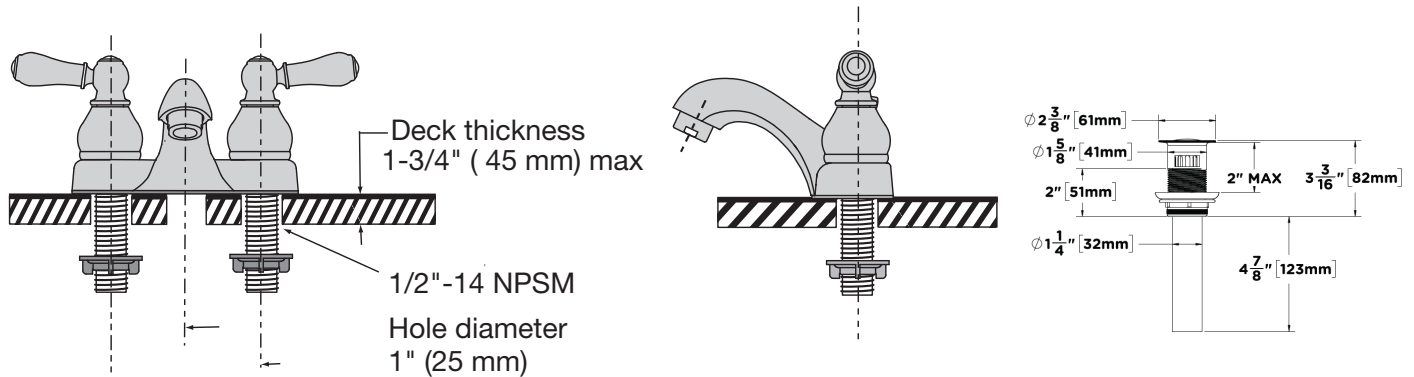
## Warranty

**Limited Lifetime** - to the original end purchaser in consumer/residential installations.

**10 Years** - for commercial/industrial installations. Refer to [www.symmons.com/warranty](http://www.symmons.com/warranty) for complete warranty information.

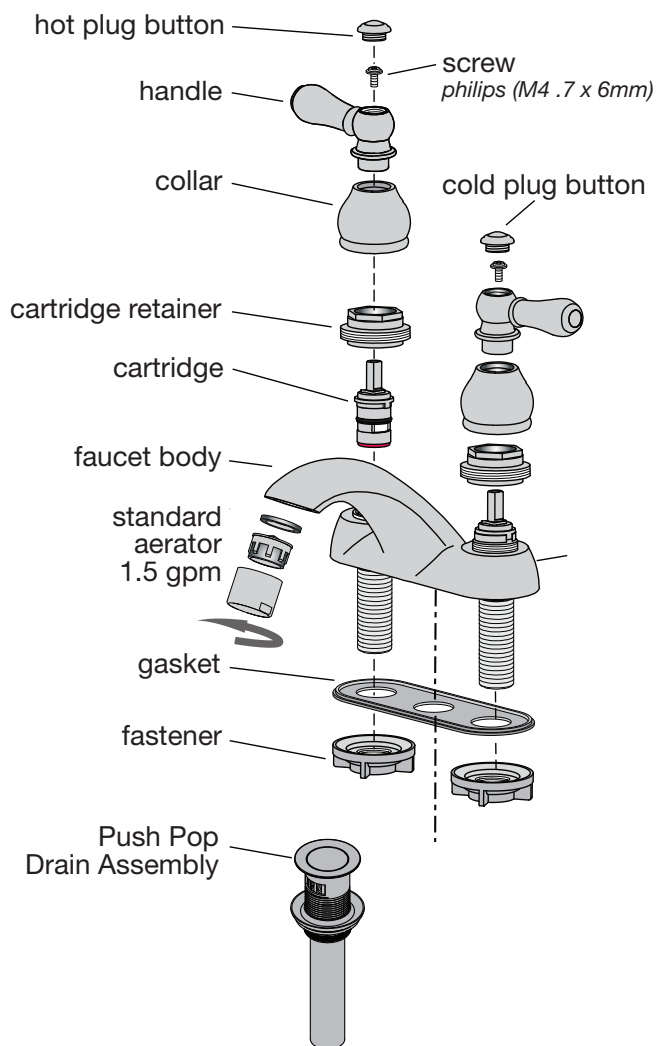


## Dimensions

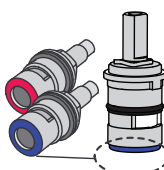
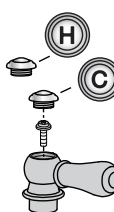
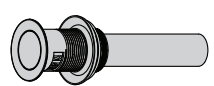
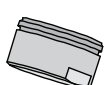


**Note:** Dimensions are subject to change without notice.

## Parts Breakdown


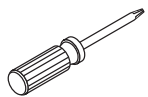

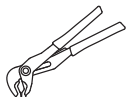


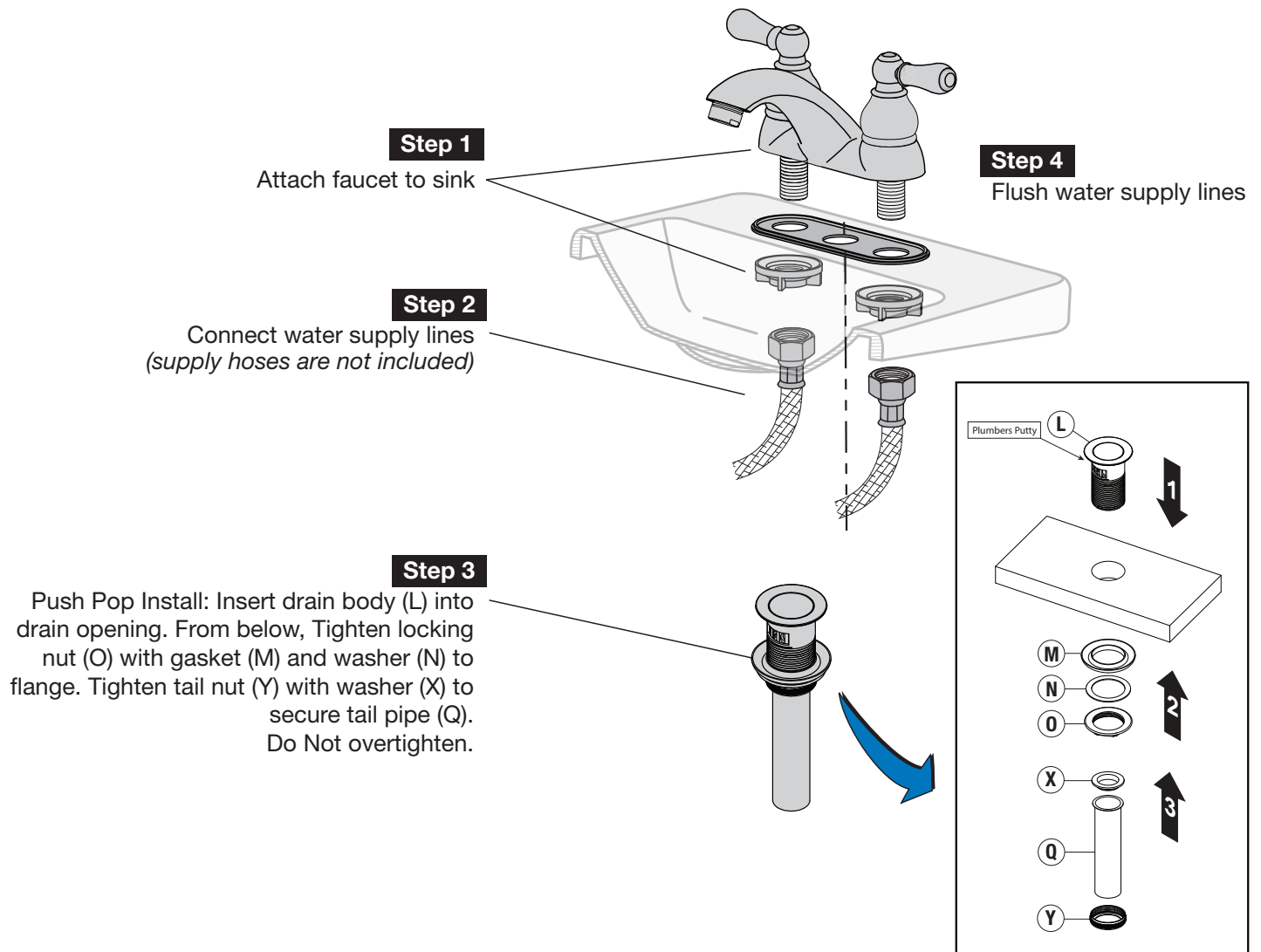
## Replacement Parts

Part Number	Item
LN-01452 (hot) OFF = CW LN-01453 (cold) OFF = CCW	Cartridge Hot = RED Cold = BLUE 
LN-01454*	Handle Kit hot & cold plug buttons (2) screw (1) handle (1) 
RL324*	Push Pop Drain Assembly 
SWA-17FR* FLR-111-1.5* FLR-111-1.0*	Aerator assembly flow rates 2.2 gpm (8.3L/min) 1.5 gpm (5.7L/min) 1.0 gpm (3.8L/min) 

\* Note: When ordering replacement parts for faucets with an optional decorative finish, append appropriate three letter finish suffix code to part numbers marked with an asterisk (\*).

## Tools Required

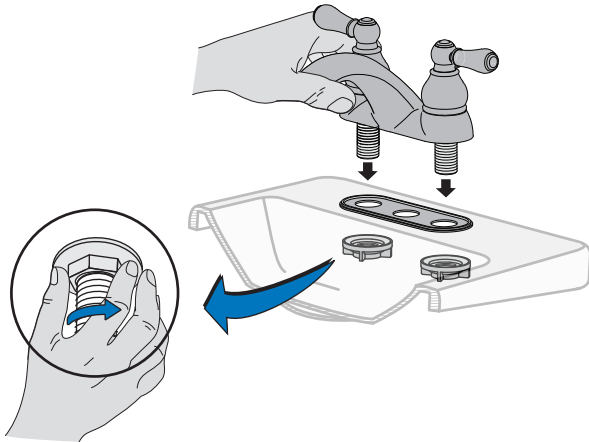
Adjustable Wrench	
Phillips Head Screwdriver	
Plumber Putty	
Plumber Tape	
Soft Jaw Pliers	



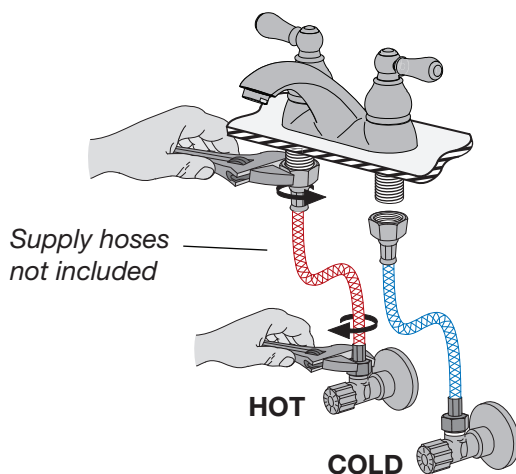
# Installation Instructions

**Caution:** If replacing an older faucet ensure water supply is turned OFF before removing. Then turn faucet control valves ON to relieve water pressure.

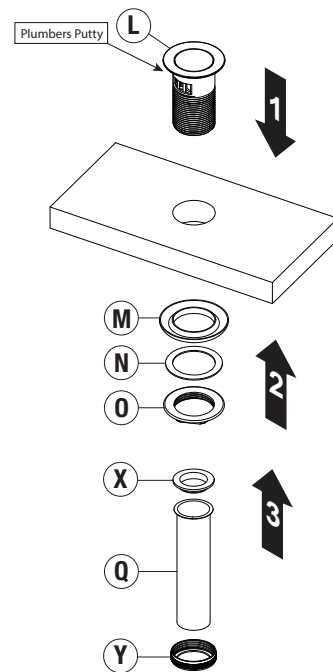
## Step 1 Attach faucet to sink



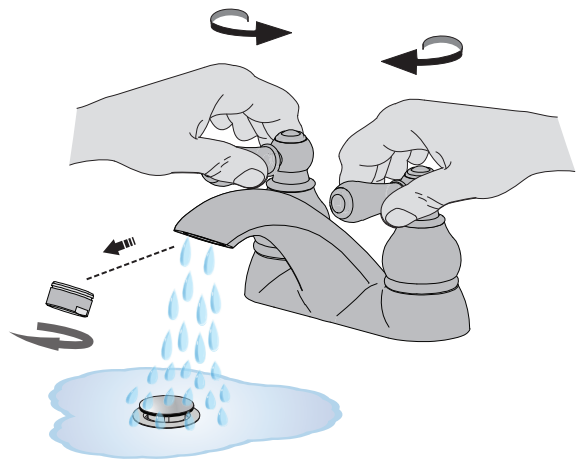
## Step 2 Connect water supply lines



**Step 3 Push Pop Install:** Insert drain body (L) into drain opening. From below, Tighten locking nut (O) with gasket (M) and washer (N) to flange. Tighten tail nut (Y) with washer (X) to secure tail pipe (Q). **DO NOT** overtighten.



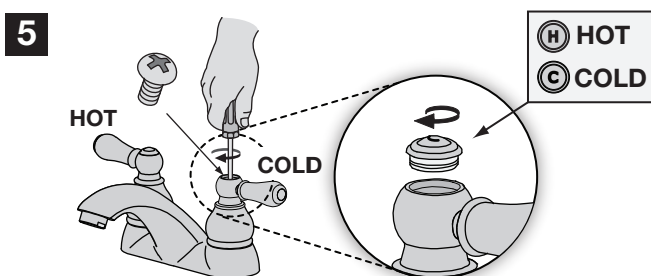
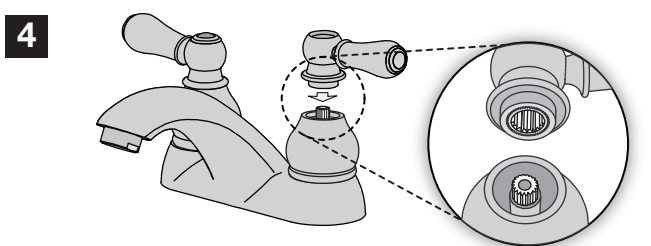
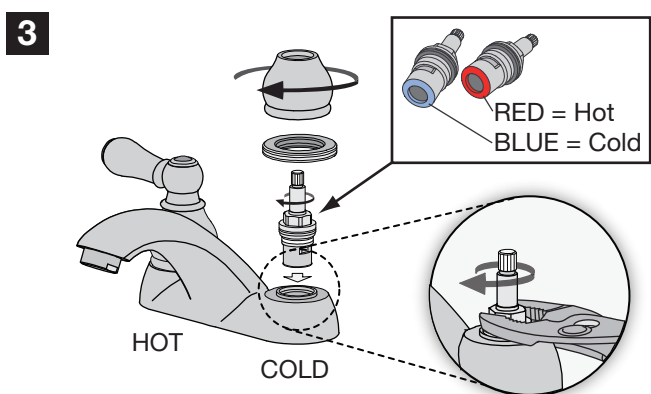
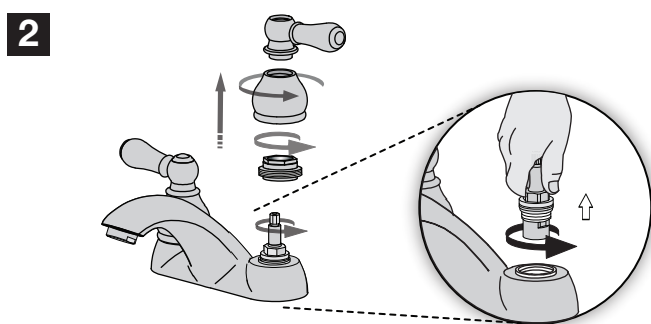
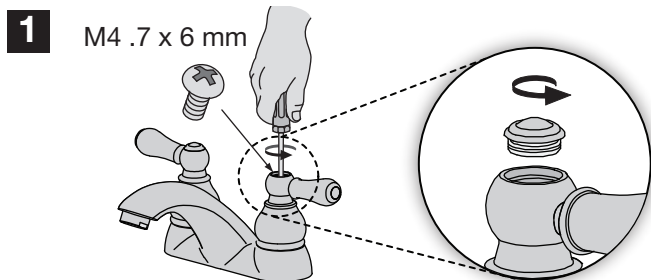
## Step 4 Flush water supply lines



## Care of faucet finish

Clean finish area by using mild soap and water or non-abrasive cleaners and then rinse immediately. A non-abrasive wax may be used to preserve finish area.

## Valve cartridge replacement



---

## Troubleshooting Chart

---

Problem	Cause	Solution
Finish is spotting.	Elements in water supply may cause water staining on finish.	Clean finished trim area with a soft cloth using mild soap and water or a non-abrasive cleaner and then quickly rinse with water.