

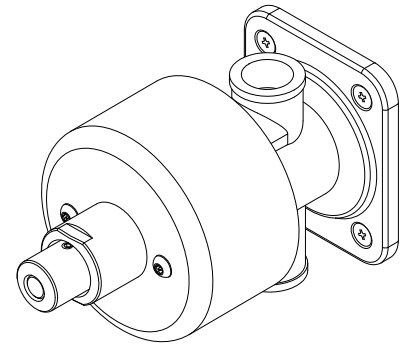


SYMMONS® ShowerOff®

EXPOSED METERING SHOWER SYSTEM

MODEL: 4-425

PARTS BREAKDOWN



FEATURE HIGHLIGHTS

Exposed Metering Shower System shall be vandal resistant. System shall feature adjustable run time and shall include push button metering valve body, integral service stop, wall flange and 1/2" IPS connections. System shall be made of metal materials, plated in standard polished chrome finish.

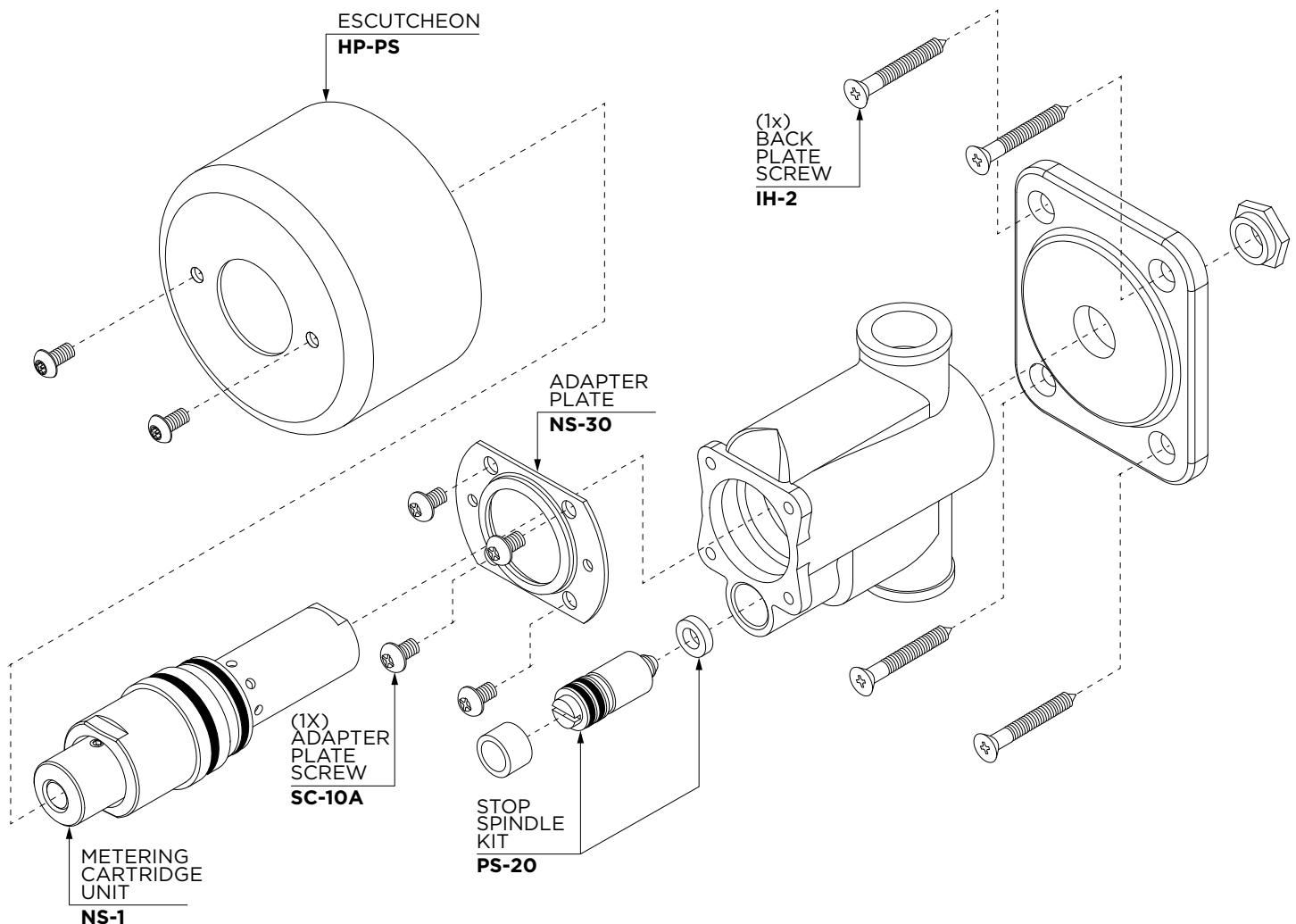
WARRANTY

Limited Lifetime - to the original end purchaser in consumer/residential installations.

10 Years - for commercial/industrial installations. Refer to www.symmons.com/warranty for complete warranty information.



PARTS BREAKDOWN



Timing Instructions

1. Loosen Allen set screw (NS-28) on side of knob (NS-3).
2. Pop-out plug-button (NS-29) with sharp pointed tool.
3. Insert thin blade screw driver in center hole of knob (NS-3) and into the slot of the push-rod (NS-4).
4. Turn knob (NS-3) clockwise while holding screw driver firmly. Turn until push-rod (NS-4) is 3/16" from top of knob (NS-3). This will give minimum time cycle. Replace plug button (NS-29).
5. Tighten Allen set screw (NS-28). To increase time cycle, turn knob (NS-3) counter-clockwise in step 4.

