

Location:





SYMMONS® Safetymix®



4-500-BODY, 4-500-X-BODY

Heavy Duty Pressure Balancing Shower Valve

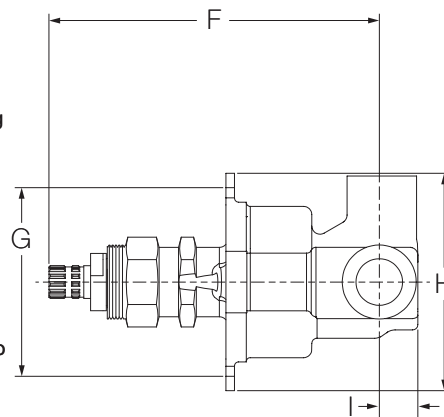
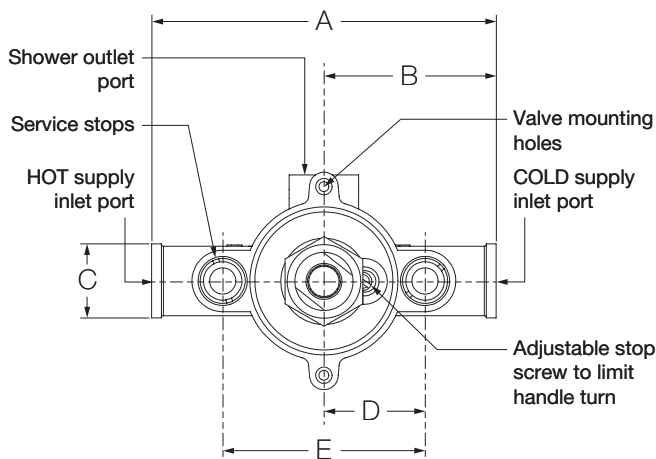
Specification Submittal

Model Numbers	Specification
<input type="checkbox"/> 4-500-BODY Heavy duty Pressure Balancing shower valve <input type="checkbox"/> 4-500-X-BODY Heavy duty Pressure Balancing shower valve with integral service stops for water shut off at valve for service	Safetymix heavy duty Pressure Balancing shower valve with adjustable stop screw to limit handle turn and female IPS inlet/outlet connections. Valve body constructed from metal materials.
Options/ Modifications	Compliance
<input type="checkbox"/> -X Integral service stops - allows water shut off at valve for service. Recommended for use on all multiple commercial installations <input type="checkbox"/> -X-CHKS Integral check stops - for use in installations where a positive shut-off device is used downstream of mixing valve	-ASME A112.18.1/CSA B125.1 -ASSE 1016 
Note: Append appropriate -suffix to model number.	Warranty Limited Lifetime - to the original end purchaser in consumer/residential installations. 10 Years - for commercial/industrial installations. Refer to www.symmons.com/warranty for complete warranty information. 

Architectural/ Engineering Specification

Symmons Safetymix Heavy Duty Pressure Balancing Shower Valve _____ Includes adjustable stop screw to limit handle turn and female IPS inlet/outlet connections. Valve body constructed from metal materials. 10 Year Commercial Warranty. ASME A112.18.1/CSA B125.1, ASSE 1016 compliant. Available options: "-X - Integral service stops - allows water shut off at valve for service. Recommended for use on all multiple commercial installations", "-X-CHKS - Integral check stops - for use in installations where a positive shut-off device is used downstream of mixing valve".

Dimensions



Measurements	
A	5-1/4", 133 mm
B	2-5/8", 67 mm
C	(2x) Ø 1/2", 13 mm
D	1-9/16", 40 mm
E	3-1/8", 79 mm
F	5-1/16", 129 mm
G	2-7/8", 73 mm
H	3-5/16", 84 mm
I	9/16", 14 mm

Note: Dimensions subject to change without notice.