

Location:



SYMMONS® Sereno™

Hand Shower System 4303

Specification Submittal

Feature Highlights

- Symmons hand shower system with lever handles.
- Symmons Temptrol® pressure balancing mixing valve with adjustable stop screw to limit handle turn.
- Wall/hand shower with 5 foot flexible metal hose, in-line vacuum breaker, wall connection and cradle for hand shower mounting
- Flow rate 2.5 gpm (9.5 L/min)
- Metal construction with polished chrome finish

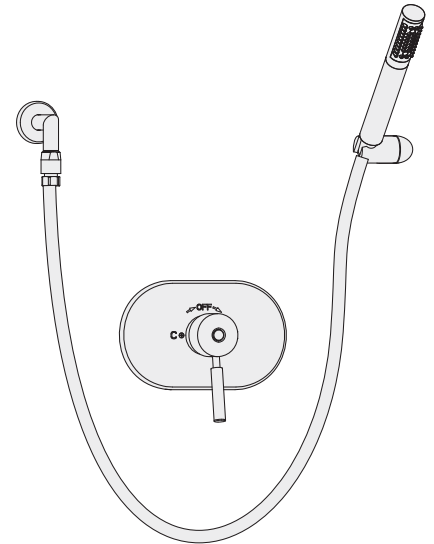
Model Numbers

- ☐ 4303Hand Shower System with Symmons Temptrol® pressure balancing mixing valve p/n 4000-BODY
- ☐ 4303-TRMTrim only, valve must be ordered separately
- ☐ 4000-BODY Symmons Temptrol® pressure balancing mixing valve without trim
- ☐ 4000-X-BODY ...Symmons Temptrol® pressure balancing mixing valve without trim. Valve includes integral service stops to allow water shut-off for service.

Finish Options

Append appropriate -suffix to model number.

- ☐ STN Satin nickel finish



Options / Modifications

Append appropriate -suffix to model number.

- ☐ -IPS 1/2 inch female IPS connections on Symmons Temptrol® mixing valve
- ☐ -X Symmons Temptrol® pressure balancing mixing valve includes integral service stops to allow water shut-off for service, p/n 4002-X-BODY. (Option only applies when ordering model 4303.)
- ☐ -2.0 2.0 (7.6 L/min) Flow rate restrictor
- ☐ -1.5 1.5 (5.7 L/min) Flow rate restrictor

Standards / Certifications

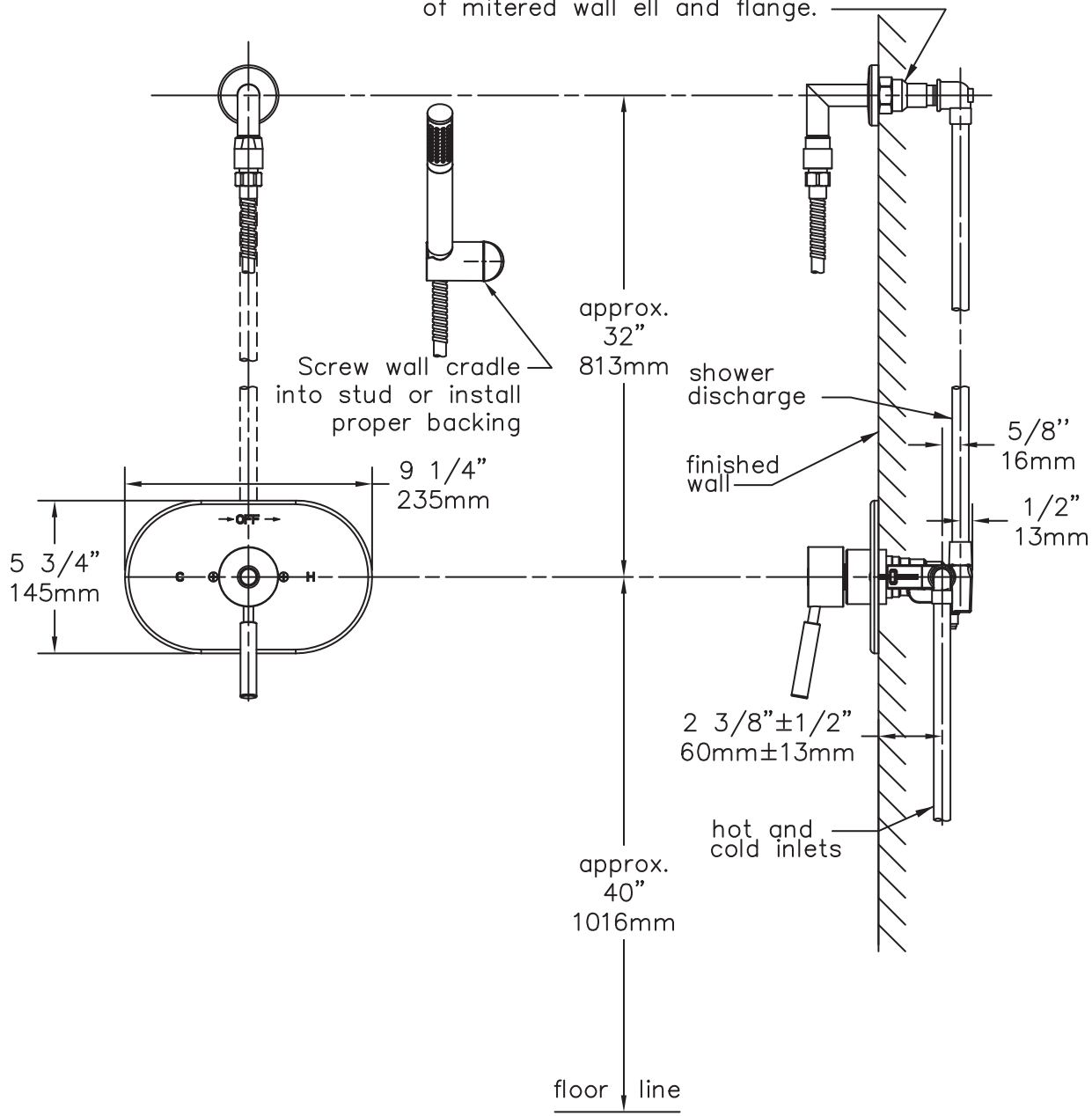
ASME A112.18.1-2005/CSA B125.1-05

Warranty

- Limited Lifetime - to the original end purchaser in consumer installations.
- 5 years - for commercial installations

Dimensions *Sereno Hand Shower System, 4303*

Female 1/2" NPT thread must be recessed 7/8" (22mm) min. 2" (51mm) max. from finished wall for proper installation of mitered wall ell and flange.



Note: Dimensions subject to change without notice.