

S3698TRM
Shower/Hand Shower Trim
Specification Submittal

Location:

Model Numbers

- S3698TRM**
Shower/Hand Shower Trim
- Valve Options:**
-S262 Series Temptrol® VersaFlex™ Shower Valve with TRM modifier
-S162 Series Temptrol VersaFlex Shower Valve requires TC modifier

Feature Highlights

- Duro Shower/Hand Shower Trim.
- Requires Temptrol VersaFlex Pressure-Balancing Shower Valve.
- Integral diverter.
- Metal lever handle.
- 30" slide bar for hand shower wand.
- Dual checks for backflow protection.
- 60" flexible metal hose.
- Single-mode HydroMersion™ hand shower wand with Non-Positive Shutoff (NPSO).
- Single-mode Hydromersion showerhead.
- Standard 2.0 gpm (7.6 L/min) flow restrictor.
- Components shall be metal and nonmetal construction, plated in standard Polished Chrome finish.

Compliance

- ASME® A112.18.1/CSA® B125.1
- WaterSense® 1.5 gpm (5.7 L/min) 2.0 gpm (7.6 L/min)
- Lever handle meets ADA requirements for operation

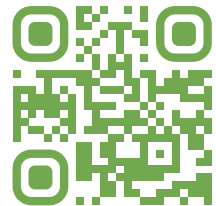


Options/Modifications

- 15** 1.5 gpm (5.7 L/min) flow restrictor
- BBZ** Brushed Bronze finish
- MB** Matte Black finish
- STN** Satin Nickel finish
- L1** Less showerhead
- L2** Less hand shower wand
- L3** Less showerhead and hand shower (head and wand only)
- L4** Less head, arm, and flange
- L5** Less hand shower system
- L7** Less handle
- TC** Test Cap Trim (includes TA-10™ & T-12A) used with S162 Series Temptrol VersaFlex Valve

Warranty

Limited Lifetime - for residential installations.
10 Years - for commercial/industrial installations.
Refer to www.symmons.com/warranty for complete warranty information.



SKU Builder

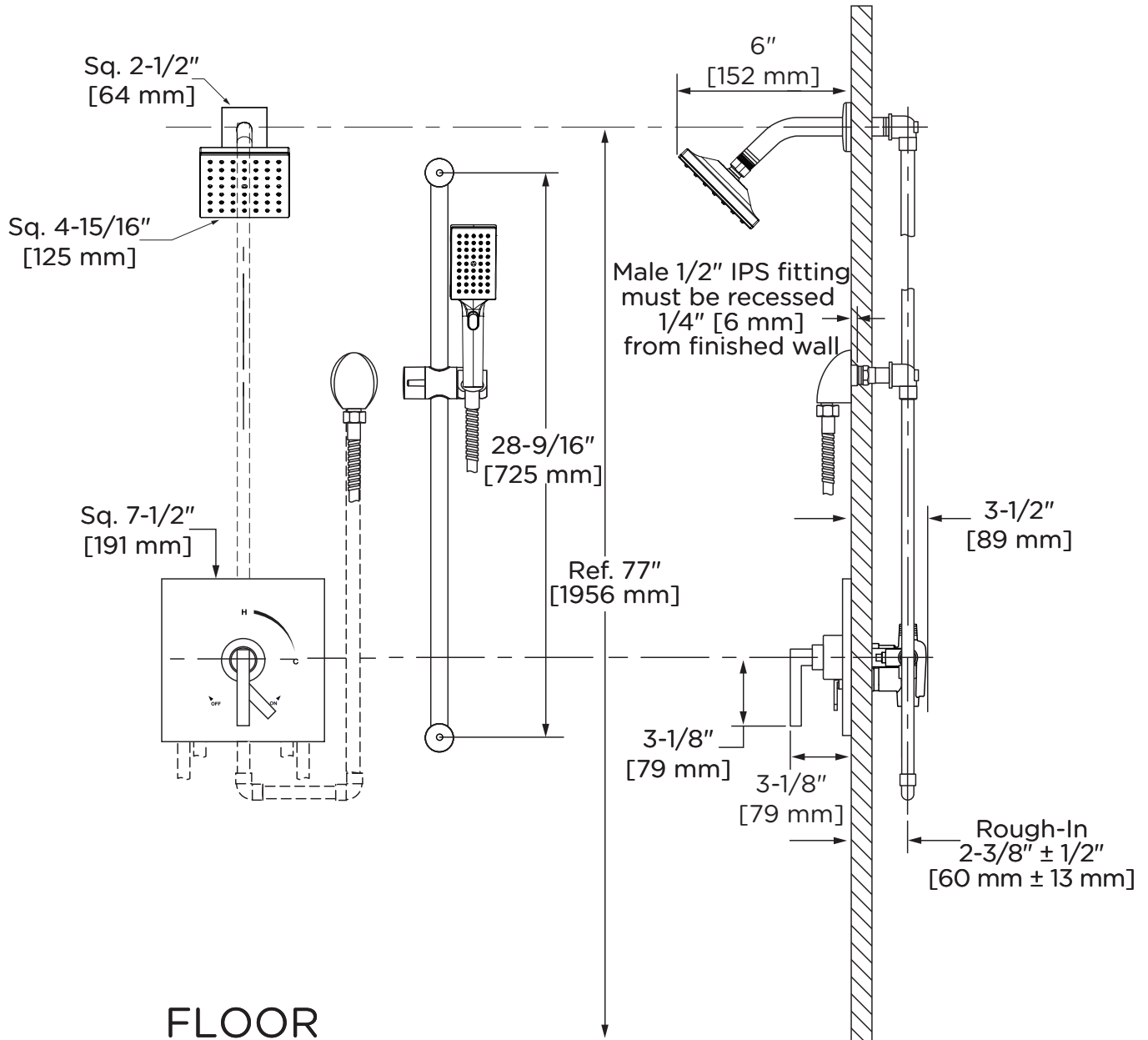
Series	Finish	Modifier	Flow Rate	Trim (required)	Test Cap	Final SKU
S3698	STN		1.5	TRM		S3698STN15TRM
S3698	MB	L3		TRM	TC	S3698MBL3TRMTC

Notes: No more than two modifiers (L1-L7) permitted when ordering. Modifiers will list in numerical order.

Architectural/ Engineering Specification

Symmons Duro Shower and Hand Shower Trim _____ Includes Duro Shower/Hand Shower Trim for Temptrol VersaFlex Pressure-Balancing Shower Valve. Features integral diverter, metal lever handle, 30" slide bar for hand shower wand, dual checks for backflow protection, 60" flexible metal hose, single-mode HydroMersion hand shower wand with NPSO, single-mode HydroMersion showerhead, and standard 2.0 gpm (7.6 L/min) flow restrictors. Components shall be metal and nonmetal construction, plated in standard Polished Chrome finish. 10-Year Commercial Warranty. ASME A112.18.1/CSA B125.1, WaterSense 1.5 gpm (5.7 L/min) and 2.0 gpm (7.6 L/min) compliant. Lever handle meets ADA requirements for operation. Available options: 15 = 1.5 gpm (5.7 L/min) flow restrictor, L1 = Less showerhead, L2 = Less hand shower wand, L3 = Less showerhead and hand shower (head and wand only), L4 = Less head, arm, and flange, L5 = Less hand shower system, L7 = Less handle, BBZ = Brushed Bronze finish, MB - Matte Black finish, STN = Satin Nickel finish, and TC = Test Cap Trim.

Dimensions



Notes:

- 1) Valve body and piping not included and shown as reference only.
- 2) Plaster shield (p/n T-176) for drywall, plaster, or other type walls 1/2" or greater.
- 3) All dimensions measured from nominal rough-in.
- 4) Dimensions subject to change without notice.