





Location:

4303-TRM, 4303TRMTC
Hand Shower Trim
Specification Submittal



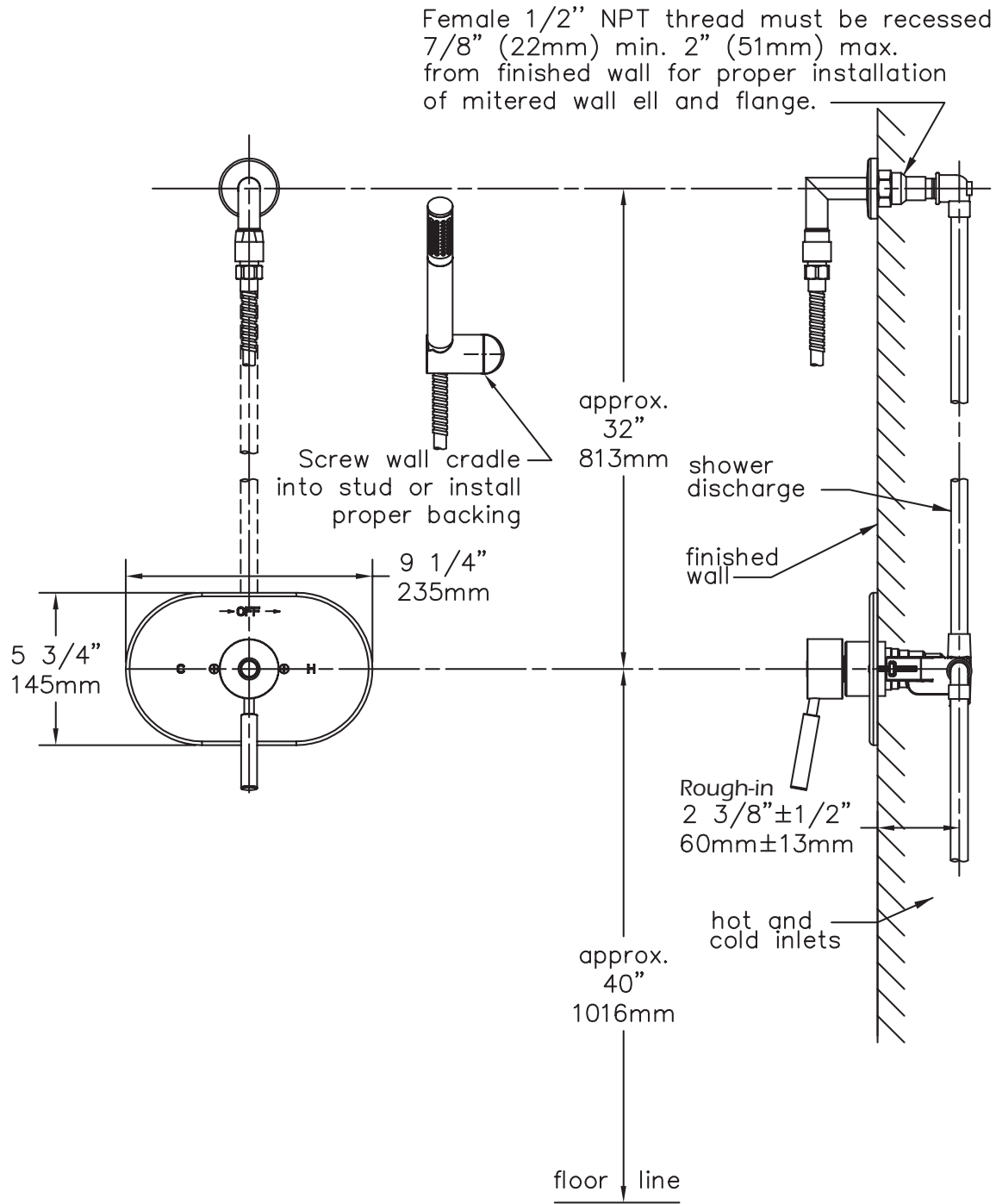
| Model Numbers | | Feature Highlights |
|---|--|--|
| <input type="checkbox"/> 4303-TRM | Hand Shower Trim, Temptrol Pressure Balancing Shower Valve ordered separately | <ul style="list-style-type: none">• Sereno Hand Shower Trim• Requires Temptrol® Pressure Balancing Shower Valve• Metal lever handle• Cradle for hand shower wand• Dual checks for backflow protection• 60" flexible metal hose• 1 mode hand shower wand• 2.0 gpm (7.6 L/min) flow restrictor• Tub spout not included• Components shall be metal and nonmetallic construction, plated in standard Polished Chrome finish• Available with TA-10 flow control spindle and T-12A cap assembly for Temptrol valve bodies installed with Test Cap (order p/n 4303TRMTC)• For optional in-line vacuum breaker order p/n EF-109 |
| <input type="checkbox"/> 4303TRMTC | Hand Shower Trim with TA-10 flow control spindle and T-12A cap assembly, must order Temptrol valve with Test Cap | |
| Options/ Modifications | | |
| <input type="checkbox"/> 1.5 | 1.5 gpm (5.7 L/min) flow restrictor | |
| <input type="checkbox"/> L2 | Less hand shower wand | |
| <input type="checkbox"/> STN | Satin Nickel finish | |
| Note: Append appropriate -suffix to model number. | | |
| Compliance | | |
| - ASME A112.18.1/CSA B125.1 | | <div><div><div>Limited Lifetime</div>- to the original end purchaser in consumer/residential installations.</div><div><div>10 Years</div>- for commercial/industrial installations. Refer to www.symmons.com/warranty for complete warranty information.</div></div> <div></div> |
|  | | |

Architectural/ Engineering Specification

Symmons Sereno Hand Shower Trim _____ Includes Sereno Hand Shower Trim, Requires Temptrol® Pressure Balancing Shower Valve, Metal lever handle, Cradle for hand shower wand, Dual checks for backflow protection, 60" flexible metal hose, 1 mode hand shower wand, 2.0 gpm (7.6 L/min) flow restrictor, Tub spout not included, Components shall be metal and nonmetallic construction, plated in standard Polished Chrome finish, Available with TA-10 flow control spindle and T-12A cap assembly for Temptrol valve bodies installed with Test Cap (order p/n 4303TRMTC), For optional in-line vacuum breaker order p/n EF-109. 10 Year Commercial Warranty. ASME A112.18.1/CSA B125.1 compliant. Available options: "1.5 - 1.5 gpm (5.7 L/min) flow restrictor", "L2 - Less hand shower wand", "STN - Satin Nickel finish".

4301-TRM, 4301TRMTC

Dimensions



Notes:

- 1) Valve body and piping not included and shown as reference only.
- 2) Plaster shield (p/n T-176) for dry wall, plaster or other type walls 1/2" or greater.
- 3) All dimensions measured from nominal rough-in.
- 4) Dimensions subject to change without notice.