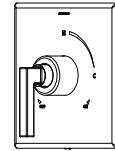


3691TRM
Shower Trim
Specification Submittal

Location:



Model Numbers

- ☐ **3691TRM**
Shower Trim

Valve Options:

- 261 Series Temptrol® Shower Valve with TRM modifiers
- 161 Series Temptrol Shower Valve requires TC modifier

Feature Highlights

- Duro Shower Trim.
- Requires Temptrol Pressure-Balancing Shower Valve.
- Metal lever handle.
- Single-mode HydroMersion™ showerhead.
- Standard 2.0 gpm (7.6 L/min) flow restrictor.
- Components shall be metal and nonmetal construction, plated in standard Polished Chrome finish.

Compliance

- ASME® A112.18.1/CSA® B125.1
- WaterSense® 1.5 gpm (5.7 L/min) 2.0 gpm (7.6 L/min)
- Lever handle meets ADA requirements for operation



Options/Modifications

- ☐ **15** 1.5 gpm (5.7 L/min) flow restrictor
- ☐ **L1** Less showerhead
- ☐ **L7** Less handle
- ☐ **TC** Test Cap Trim (includes TA-10™ & T-12A) *used with 161 Series Temptrol Shower Valve*
- ☐ **BBZ** Brushed Bronze finish
- ☐ **MB** Matte Black finish
- ☐ **STN** Satin Nickel finish

Warranty

Limited Lifetime - for residential installations.

10 Years - for commercial/industrial installations.

Refer to www.symmons.com/warranty for complete warranty information.



SKU Builder

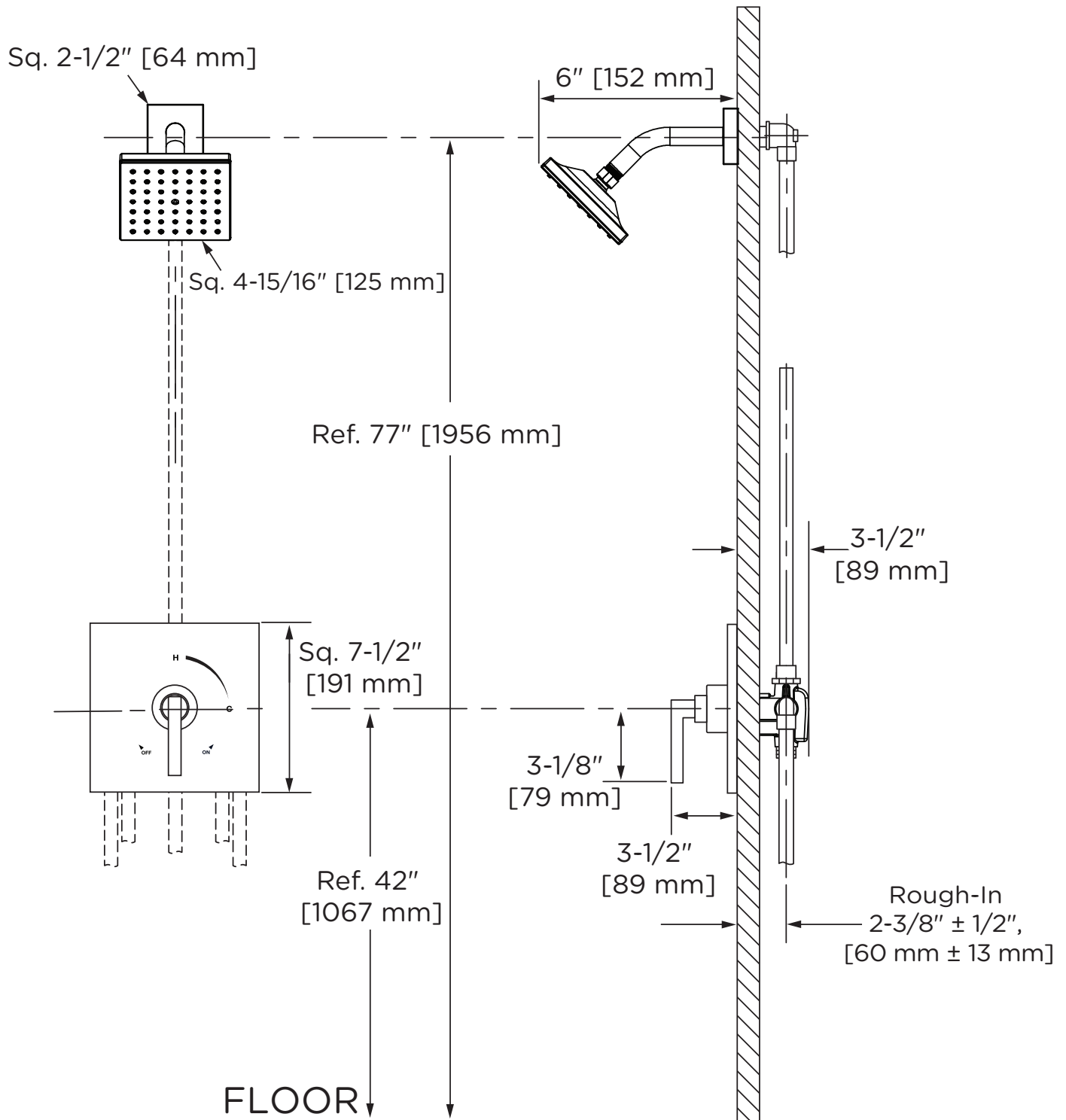
Series	Finish	Modifier	Flow Rate	TRM (required)	TC	Final SKU
3691	STN		15	TRM		3691STN15TRM
3691	MB	L1		TRM	TC	3691MBL1TRMTC

Notes: No more than two modifiers (L1-L7) permitted when ordering. Modifiers will list in numerical order.

Architectural/Engineering Specification

Symmons Duro Shower Trim _____ includes Duro Shower Trim for Temptrol Pressure-Balancing Shower Valve. Features metal lever handle, single-mode HydroMersion showerhead, and standard 2.0 gpm (7.6 L/min) flow restrictor. Components shall be metal and nonmetal construction, plated in standard Polished Chrome finish. 10-Year Commercial Warranty. ASME A112.18.1/CSA B125.1, WaterSense 1.5 gpm (5.7 L/min) and 2.0 gpm (7.6 L/min) compliant. Lever handle meets ADA requirements for operation. Available options: 15 = 1.5 gpm (5.7 L/min) flow restrictor, L1 = Less showerhead, L7 = Less handle, TC = Test Cap Trim, BBZ = Brushed Bronze finish, MB = Matte Black finish, and STN = Satin Nickel finish.

Dimensions



Notes:

- 1) Valve body and piping not included and shown as reference only.
- 2) Plaster shield (p/n T-176) for drywall, plaster, or other type walls 1/2" or greater.
- 3) All dimensions measured from nominal rough-in.
- 4) Dimensions subject to change without notice.