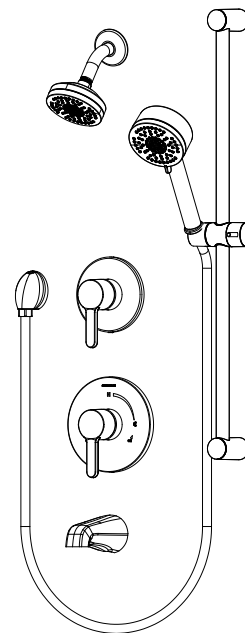




SYMMONS® Solarity®



Parts Breakdown Document

Model Numbers

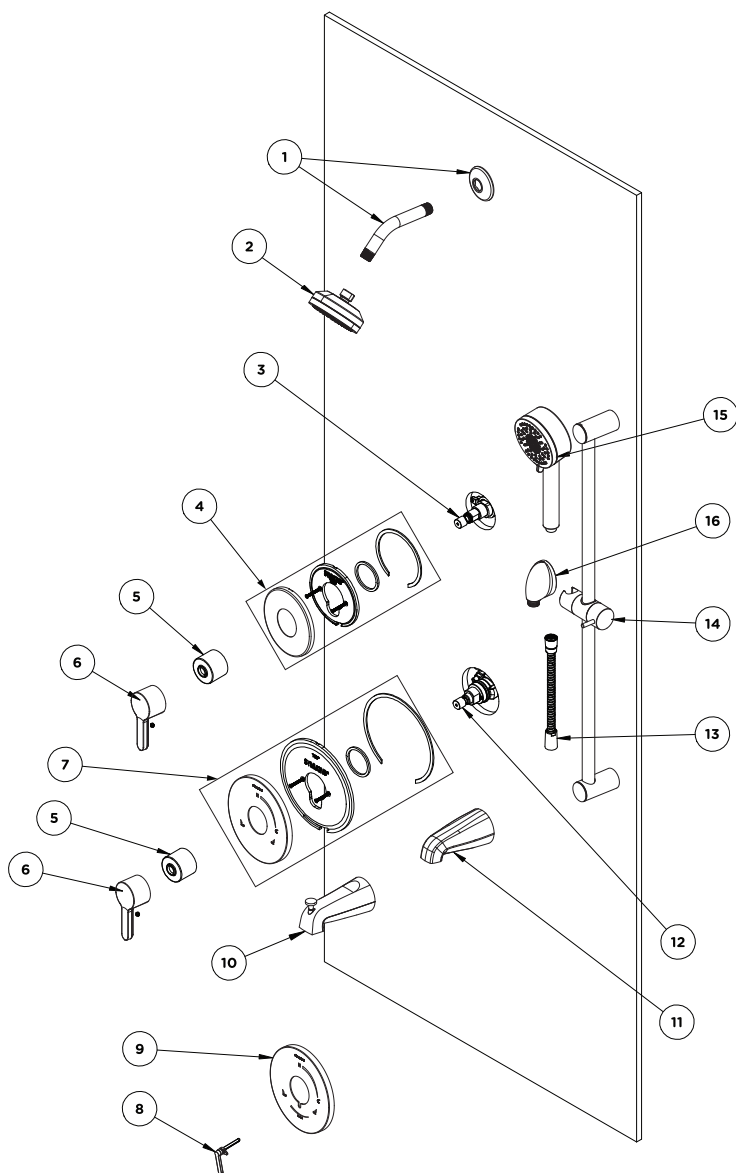
Temptrol®

- | | |
|------|---|
| 3390 | Solarity Shower Valve Trim, Valve only |
| 3391 | Solarity Shower Valve Trim, with Showerhead |
| 3392 | Braston Tub/Shower Trim, with Showerhead |
| 3393 | Solarity Shower Trim, with Hand Shower System |
| 3395 | Solarity Shower Trim, with Diverter Trim, Showerhead, and Hand Shower System |
| 3396 | Solarity Tub/Shower Trim, with Diverter Trim, Tub Spout, Showerhead, and Hand Shower System |

Temptrol® VersaFlex™

- | | |
|-------|--|
| S3390 | Solarity Shower Valve Trim, Valve only with Diverter Lever |
| S3391 | Solarity Shower Trim, with Showerhead and Diverter Lever |
| S3392 | Solarity Tub/Shower Trim, with Showerhead and Diverter Lever |
| S3394 | Solarity Tub/Shower Trim, with Hand Shower System, Diverter Lever, and Tub Spout |
| S3398 | Solarity Shower Trim with Diverter Lever, Showerhead, and Hand Shower System |

Parts Breakdown



#	Description	Part Number
1	Solarity Shower Arm and Flange	300S*
2	4" 1-Mode Showerhead	482SH*
3	Diverter Assembly, 4-Port	3DIVBODYSRT (3DIVBODYSRTNS for California)
	Diverter Assembly, 3-Port	2DIVBODYSRT (2DIVBODYSRTNS for California)
4	Solarity Diverter Escutcheon Kit	RTS177*
5	Dome Cover	T-19/20*
6	Solarity Shower Handle	RTS174*
7	Solarity Escutcheon Kit	RTS175*
8	Solarity Diverter Lever	RTS178*
9	Solarity VersaFlex™ Escutcheon Kit	RTS181*
10	Solarity Diverter Tub Spout (Slip-On)	053*
11	Solarity Tub Spout (Slip-On)	061*
12	Spindle, Temptrol®	TA-10
	Cap Assembly	TA-12A
13	Hand Shower Hose 5'	EF-104*
14	Solarity Slide Bar Assembly	RA-009*
15	4" HydroMersion Single-Mode Hand Shower Wand	482W*
16	Wall Elbow, Type 2 Drop	EF-105*

*If finish is OTHER than chrome, part requires finish modifier

Finish Modifiers:

- MB - Matte Black finish
- STN - Satin Nickel finish