


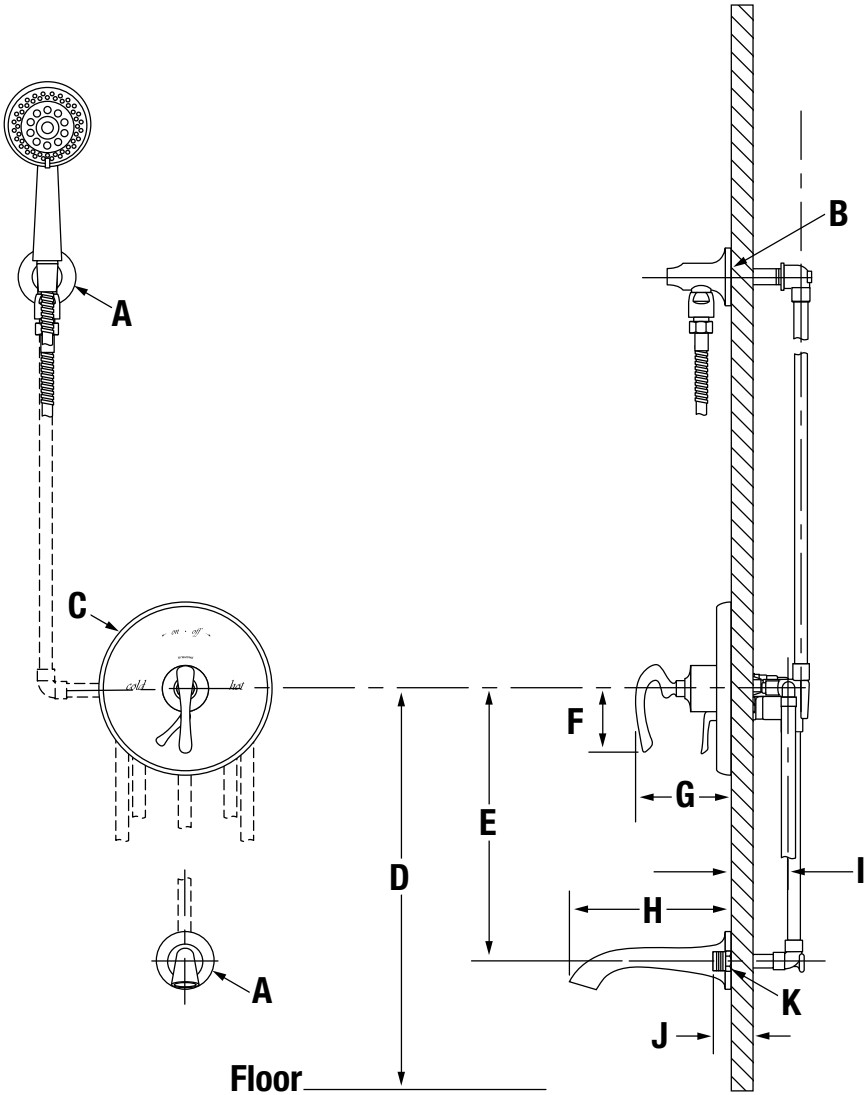


S-5204-TRM
Ballina™ Tub/Hand Shower Trim
Operation & Maintenance Manual

Model Numbers	Specifications
<div><input type="checkbox"/> S-5204-TRM</div> <div><i>Tub/Hand Shower Trim</i></div>	<p>Tub/hand shower trim with lever handle and secondary integral diverter handle includes wall connection, cradle for hand shower mounting, non-diverter tub spout, in-line vacuum breaker, flexible metal hose and 3 mode hand shower with 2.5 gpm (9.5 L/min) flow restrictor. Components made from metal and nonmetallic materials plated in standard polished chrome finish.</p>
Modifications	Compliance
<div><input type="checkbox"/> -1.5  1.5 gpm (5.7 L/min) flow restrictor</div> <div><input type="checkbox"/> -2.0  2.0 gpm (7.6 L/min) flow restrictor</div> <div><input type="checkbox"/> -412HSB 30" slide bar in place of wall cradle on hand shower units</div> <div><input type="checkbox"/> -BBZ Brushed bronze finish</div> <div><input type="checkbox"/> -STN Satin nickel finish</div>	<div><div>-ASME A112.18.1; CSA B125.1</div><div></div></div> <div><div>Warranty</div><div><p>Limited Lifetime - to the original end purchaser in consumer installations.</p><p>5 Years - for commercial installations.</p><p>Refer to www.symmons.com/warranty for complete warranty information.</p></div></div>

Note: Append appropriate -suffix to model number.

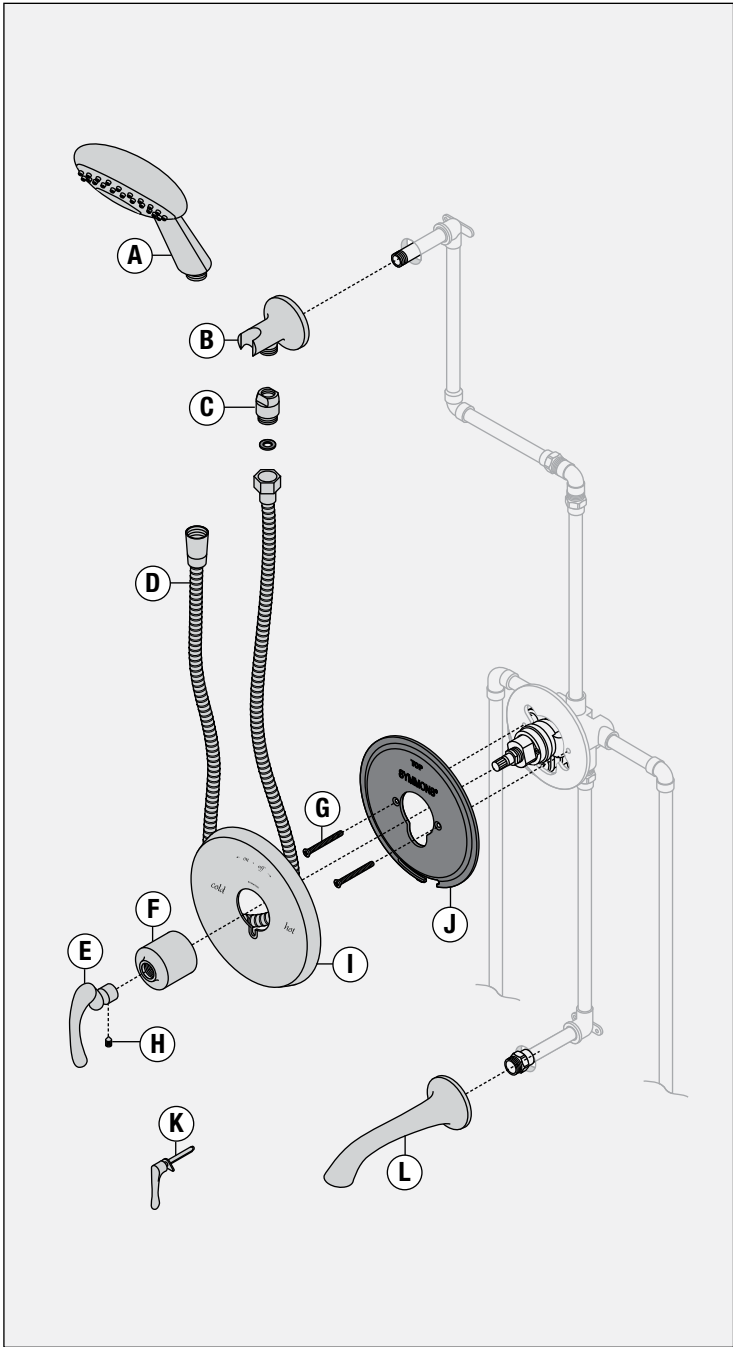
Dimensions



Measurements	
A	Ø 2 1/2", 64 mm
B	1/2" IPS thread must protrude 1/2" from finished wall
C	Ø 7 1/2", 191 mm
D	32", 813 mm
E	12", 305 mm
F	3", 76 mm
G	4 1/8", 105 mm
H	7", 178 mm
I	(Rough in) 2 3/8" ± 1/2", 60 mm ± 13 mm
J	1/2", 13 mm
K	1/2" NPT


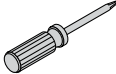


- Notes:**
- 1) All dimensions measured from nominal rough-in (see I as reference).
 - 2) Dimensions are subject to change without notice.

Parts Breakdown



Replacement Parts		
Item	Description	Part Number
A	Hand Shower	412W
B	Cradle	T-635
C	Vacuum Breaker	EF-104
D	60" Hose	
E	Handle	T-660
H	Set Screw	
F	Dome Cover	T-633
G	Mounting Screws	T-631A- NS-K001
J	Mounting Plate	
I	Shower Escutcheon	
K	Diverter Handle	T-630
L	Tub Spout	522TS

- Notes:**
- 1) Append -BBZ to part number for brushed bronze finish; -STN for satin nickel.
 - 2) Append -1.5 or -2.0 to hand shower for low flow.

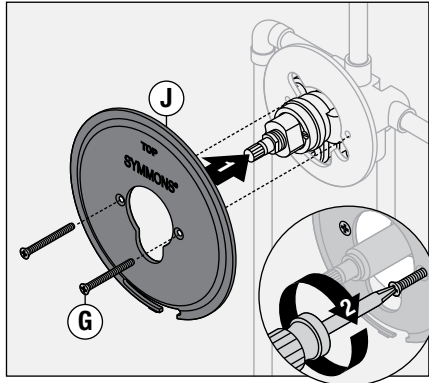
Required for Installation	
Adjustable wrench	
Phillips head screwdriver	
Allen wrench (1/8")	
Plumber tape	

Installation

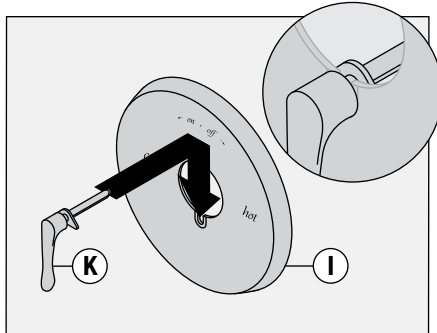
Note:

For valve body installation, please see valve body installation guide.

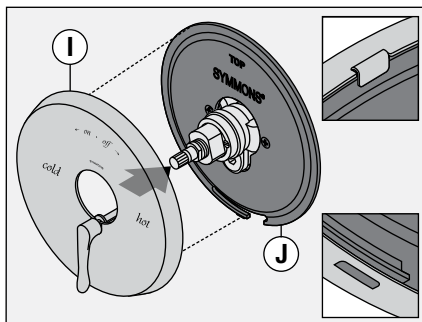
- 1) Install large plastic mounting plate (J) to shower valve (S-4002-BODY). Secure with two screws (G).



- 2) Attach secondary integral diverter (K) to shower escutcheon (I).

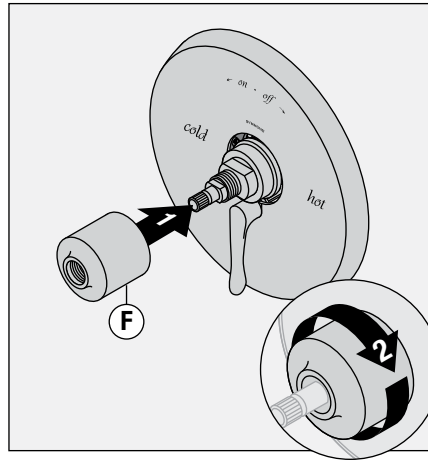


- 3) Attach shower escutcheon (I) to large plastic mounting plate (J).

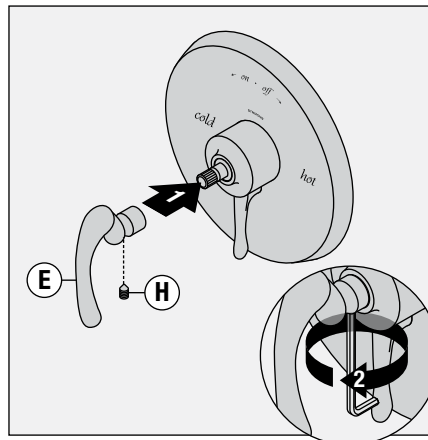


Note: Tabs should snap into place.

- 4) Install dome cover (F) to valve by turning clockwise.

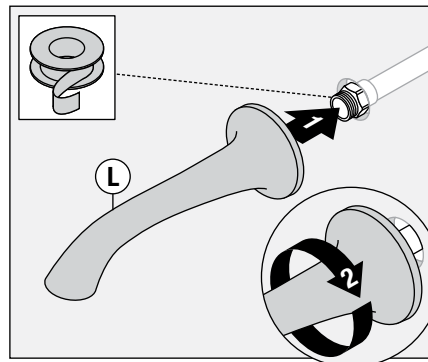


- 5) Install shower handle (E) to valve. Secure handle by tightening set screw (H).

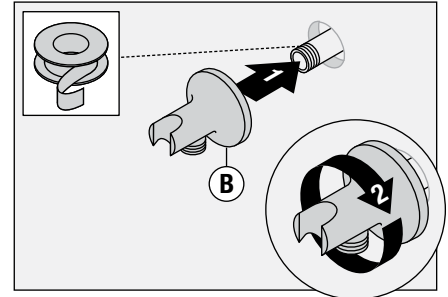


Note: Handle should be facing the 6 o'clock position.

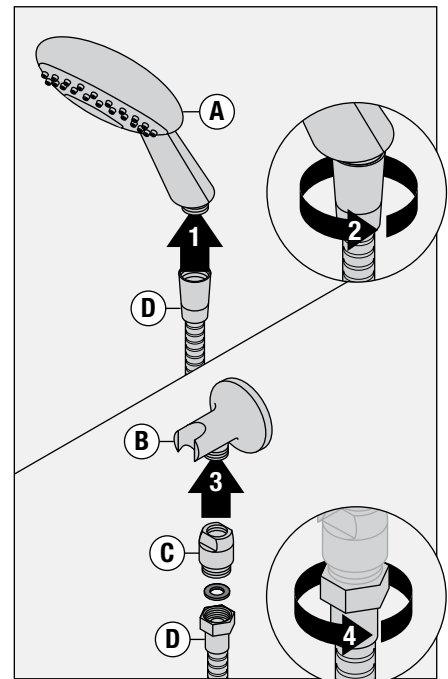
- 6) Install tub spout (L) to pipe fitting. Turn clockwise to secure.



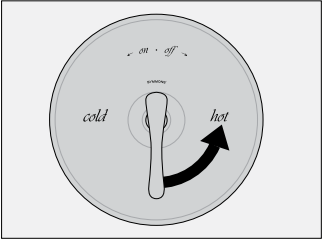
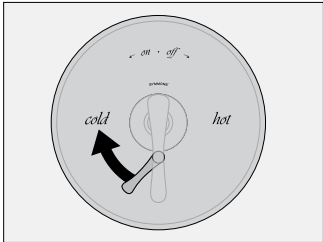
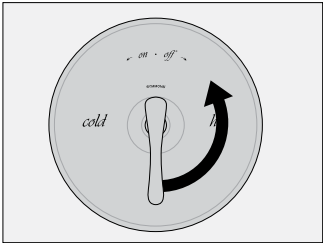
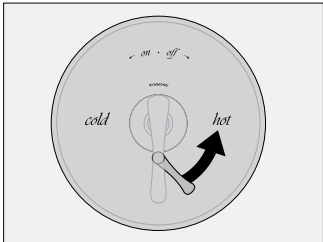
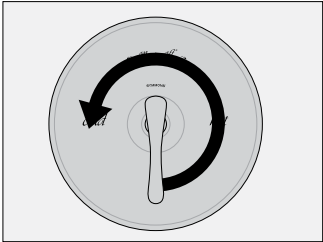
- 7) Install cradle (B) to pipe fitting. Turn clockwise to tighten.



- 8) Attach large end of hand shower hose (D) to hand shower (A). Attach small end of hand shower hose (D) and gasket to in-line vacuum breaker (C). Connect in-line vacuum breaker to cradle (B). Turn clockwise to tighten.



Operation

Temperature Control	Diverter Control
<p>1) Turn shower handle counterclockwise approximately 1/4 turn to put valve in cold position.</p> 	<p>1) Turn diverter lever left for tub spout operation.</p> 
<p>2) Turn shower handle counterclockwise approximately 1/2 turn to put valve in warm position.</p> 	<p>2) Turn diverter lever right for hand shower operation.</p> 
<p>3) Turn shower handle counterclockwise approximately 3/4 turn to put valve in hot position.</p> 	

Care and Cleaning

- 1) Clean finished trim area with a soft cloth using mild soap and water or a non-abrasive cleaner and then quickly rinse with water.

Troubleshooting Chart

Problem	Cause	Solution
Finish is spotting.	Elements in water supply may cause water staining on finish.	Clean finished trim area with a soft cloth using mild soap and water or a non-abrasive cleaner and then quickly rinse with water.