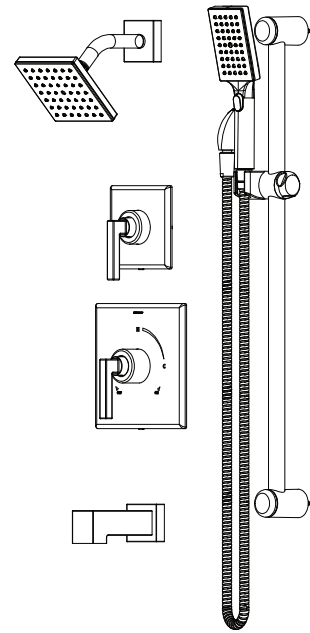




SYMMONS® Duro

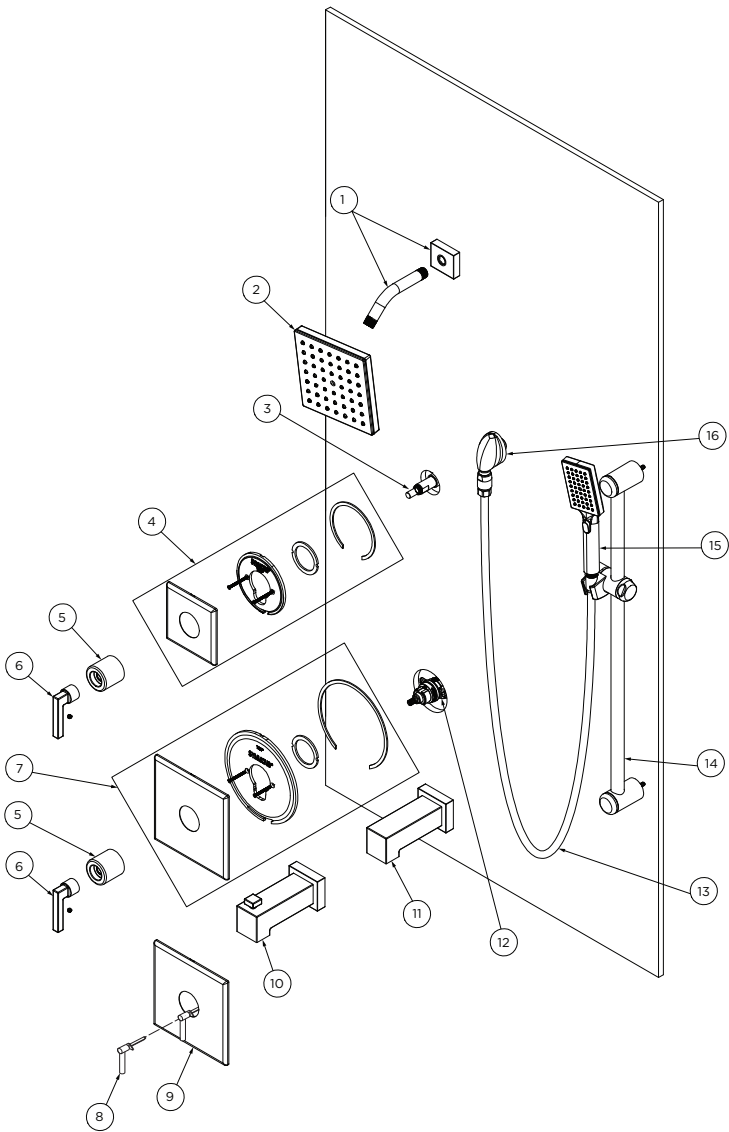


Parts Breakdown Document

Model Numbers

- | | |
|---|---|
| <input type="checkbox"/> 3690: Duro Shower Valve Trim, Valve only | <input type="checkbox"/> S3690: Duro Shower Valve Trim, Valve only with Diverter Lever |
| <input type="checkbox"/> 3691: Duro Shower Valve Trim, with Showerhead | <input type="checkbox"/> S3691: Duro Shower Trim, with Showerhead and Diverter Lever |
| <input type="checkbox"/> 3692: Duro Tub/Shower Trim, with Showerhead | <input type="checkbox"/> S3692: Duro Tub/Shower Trim, with Showerhead and Diverter Lever |
| <input type="checkbox"/> 3693: Duro Shower Trim, with Hand Shower System | <input type="checkbox"/> S3694: Duro Tub/Shower Trim, with Hand Shower System, Diverter Lever, and Tub Spout |
| <input type="checkbox"/> 3695: Duro Shower Trim, with Diverter Trim, Showerhead, and Hand Shower System | <input type="checkbox"/> S3698: Duro Shower Trim with Diverter Lever, Showerhead, and Hand Shower System |
| <input type="checkbox"/> 3696: Duro Tub/Shower Trim, with Diverter Trim, Tub Spout, Showerhead, and Hand Shower System | |

Parts Breakdown



#	Description	Part Number
1	Shower Arm	300SQ*
2	Square Showerhead	482SHSQ*
3	Diverter Assembly, 4-Port	3DIVBODYSRT (3DIVBODYSRTNS for California)
	Diverter Assembly, 3-Port	2DIVBODYSRT (2DIVBODYSRTNS for California)
4	Diverter Escutcheon Kit	RTS-040*
5	Dome Cover	RTS-037*
6	Shower Handle (Plastic)	T-617*
7	Square Escutcheon Kit	RTS-001*
8	Diverter Lever	RTS-004*
9	VersaFlex™ Escutcheon Kit	RTS-003*
10	Diverter Tub Spout (Thread-On)	361DTS*
11	Tub Spout (Thread-On)	361TS*
12	Spindle, Temptrol®	TA-10
	Cap Assembly	TA-12A
13	Hand Shower Hose 5'	EF-104*
14	Slide Bar Assembly, 30"	RA-009*
15	Hand Shower Wand	482WSQ*
16	Wall Elbow, Type 2 Drop	EF-105*

*If finish is OTHER than Chrome, part requires finish modifier

Finish Modifiers:

- BBZ - Brushed Bronze finish
- MB - Matte Black finish
- STN - Satin Nickel finish