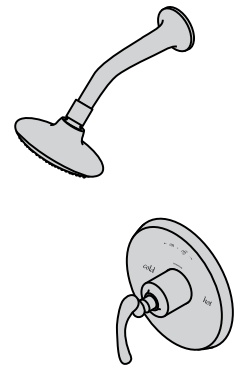







5200-TRM, 5201-TRM
 Ballina™ Trim Series
Operation & Maintenance Manual

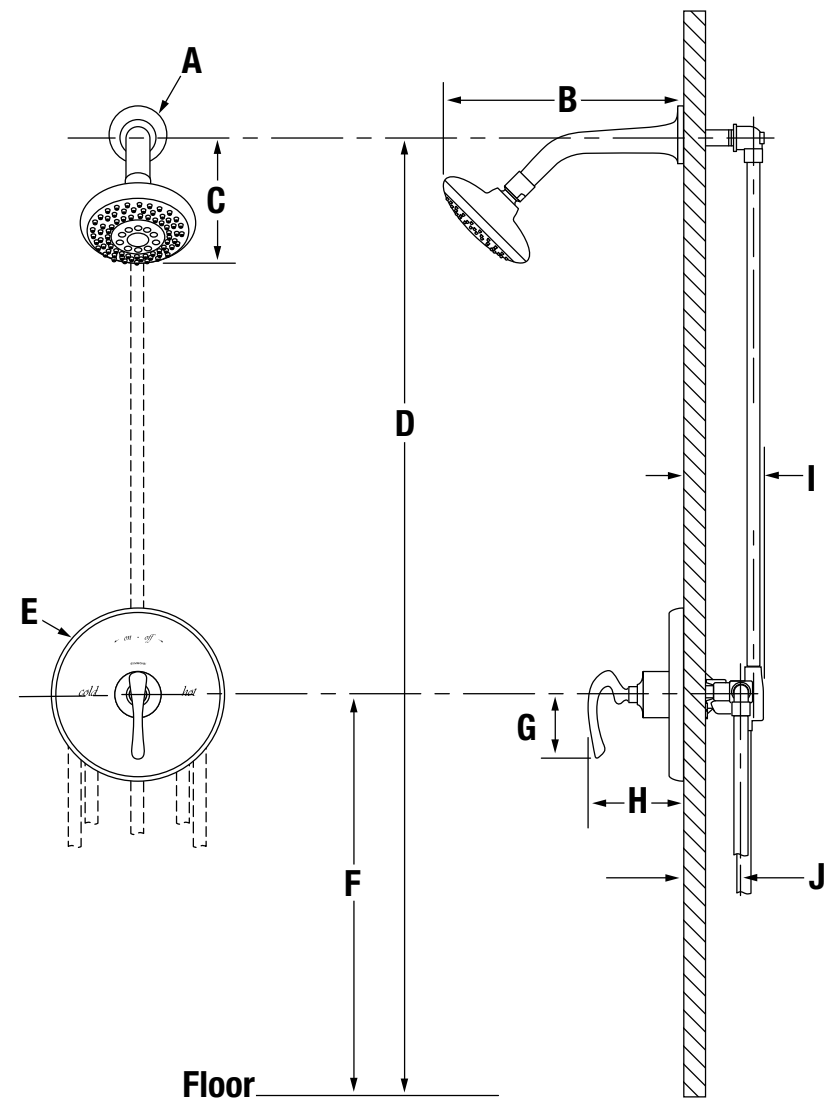


Model Numbers		Specifications
<input type="checkbox"/> 5200-TRM	<i>Valve Trim</i>	Shower trim includes shower escutcheon kit and 3 mode showerhead with standard 2.5 gpm (9.5 L/min) flow restrictor. Valve trim includes shower escutcheon kit only. Components made from metal and nonmetallic materials plated in standard polished chrome finish.
<input type="checkbox"/> 5201-TRM	<i>Shower Trim</i>	
Modifications		Compliance
<input type="checkbox"/> -1.5	 <i>1.5 gpm (5.7 L/min) flow restrictor</i>	-ASME A112.18.1; CSA B125.1 
<input type="checkbox"/> -2.0	 <i>2.0 gpm (7.6 L/min) flow restrictor</i>	
<input type="checkbox"/> -BBZ	<i>Brushed bronze finish</i>	Warranty Limited Lifetime - to the original end purchaser in consumer installations. 5 Years - for commercial installations. Refer to www.symmons.com/warranty for complete warranty information.
<input type="checkbox"/> -STN	<i>Satin nickel finish</i>	

Note: Append appropriate -suffix to model number.

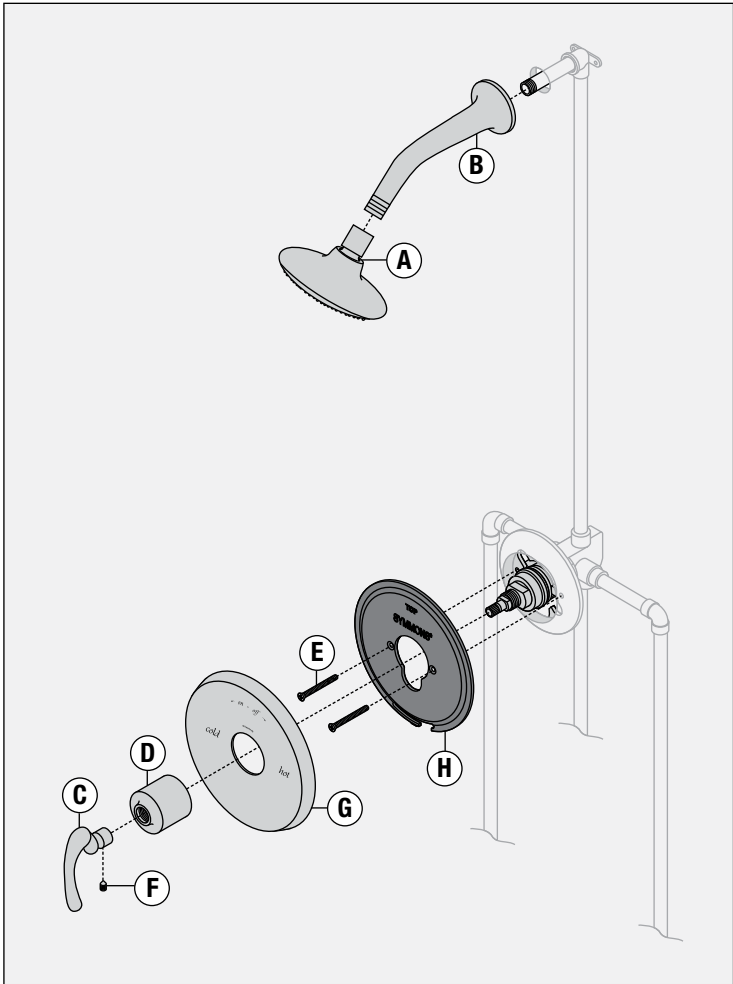
Dimensions

Measurements	
A	Ø 2 1/2", 64 mm
B	10 5/8", 268 mm
C	5 1/4", 132 mm
D	77", 1956 mm
E	Ø 7 1/2", 191 mm
F	45", 1143 mm
G	3", 76 mm
H	4 1/8", 105 mm
I	3 1/2", 89 mm
J	(Rough in) 2 3/8" ± 1/2", 60 mm ± 13 mm



Notes:
1) All dimensions measured from nominal rough-in (see J as reference).
2) Dimensions are subject to change without notice.


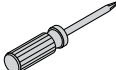


Parts Breakdown



Replacement Parts		
Item	Description	Part Number
A	Showerhead	412SH
B	Shower Arm	T-637
C F	Handle Set Screw	T-660
D	Dome Cover	T-633
E G H	Mounting Screws Shower Escutcheon Mounting Plate	T-631-NS-K001

Notes:

- 1) Append -STN to part number for satin nickel finish; -BBZ for brushed bronze.
- 2) Append -1.5 or -2.0 to showerhead or hand shower for low flow.

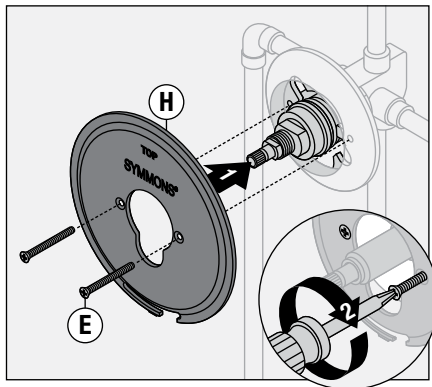
Required for Installation	
Adjustable wrench	
Phillips head screwdriver	
Allen wrench (1/8")	
Plumber tape	

Installation

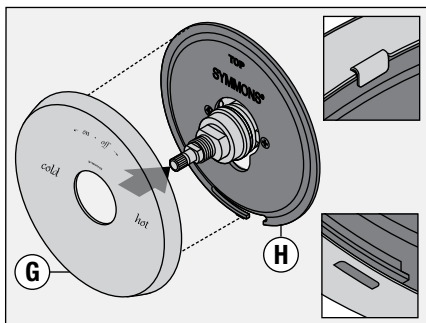
Note:

For valve body installation, please see valve body installation guide.

- 1) Install large plastic mounting plate (H) to shower valve. Secure with two screws (E).

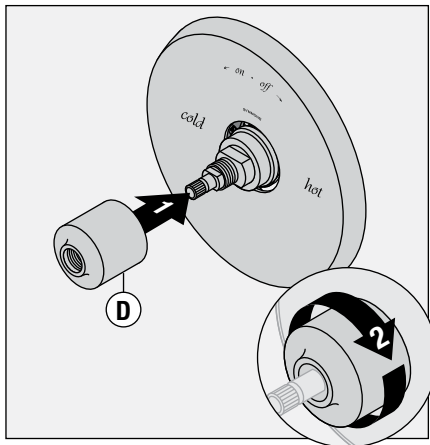


- 2) Attach shower escutcheon (G) to large plastic mounting plate (H).

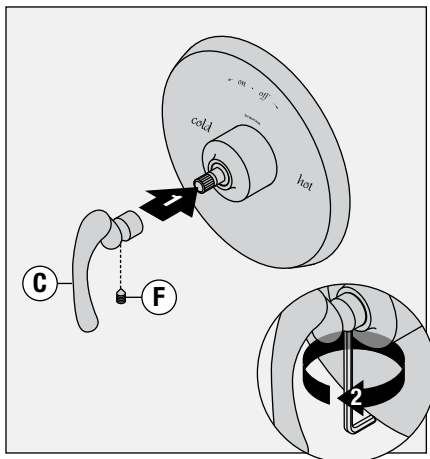


Note: Tabs should snap into place.

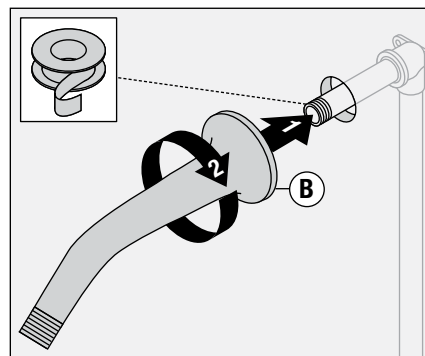
- 3) Install dome cover (D) to valve by turning clockwise.



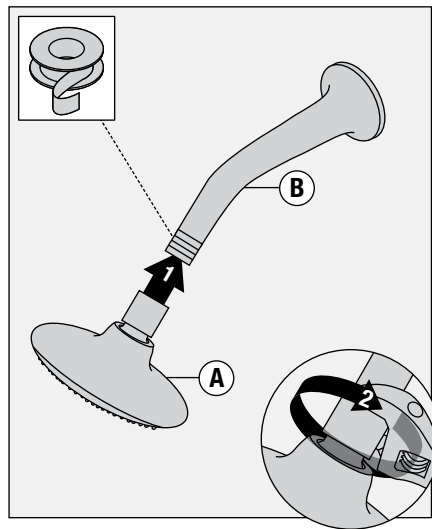
- 4) Install handle (C) to valve. Secure handles by tightening set screw (F).



- 5) Attach shower arm (B) to vertical shower pipe. Turn clockwise to tighten.



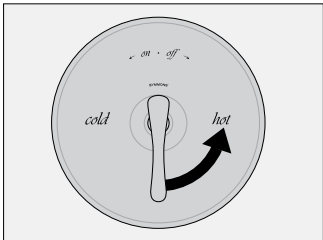
- 6) Install showerhead (A) to shower arm (B). Turn clockwise to tighten.



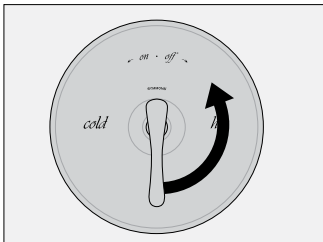
Operation

Temperature Control

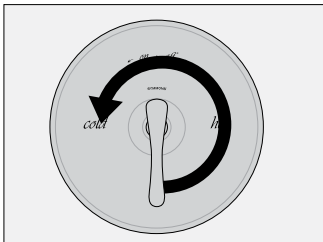
- 1) Turn shower handle counterclockwise approximately 1/4 turn to put valve in cold position.



- 2) Turn shower handle counterclockwise approximately 1/2 turn to put valve in warm position.



- 3) Turn shower handle counterclockwise approximately 3/4 turn to put valve in hot position.



Care and Cleaning

- 1) Clean finished trim area with a soft cloth using mild soap and water or a non-abrasive cleaner and then quickly rinse with water.

Troubleshooting Chart

Problem	Cause	Solution
Finish is spotting.	Elements in water supply may cause water staining on finish.	Clean finished trim area with a soft cloth using mild soap and water or a non-abrasive cleaner and then quickly rinse with water.