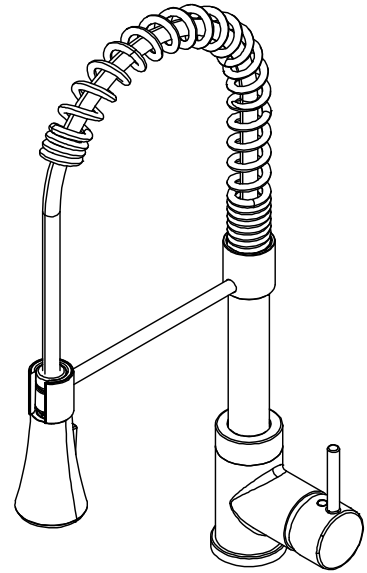




SYMMONS®

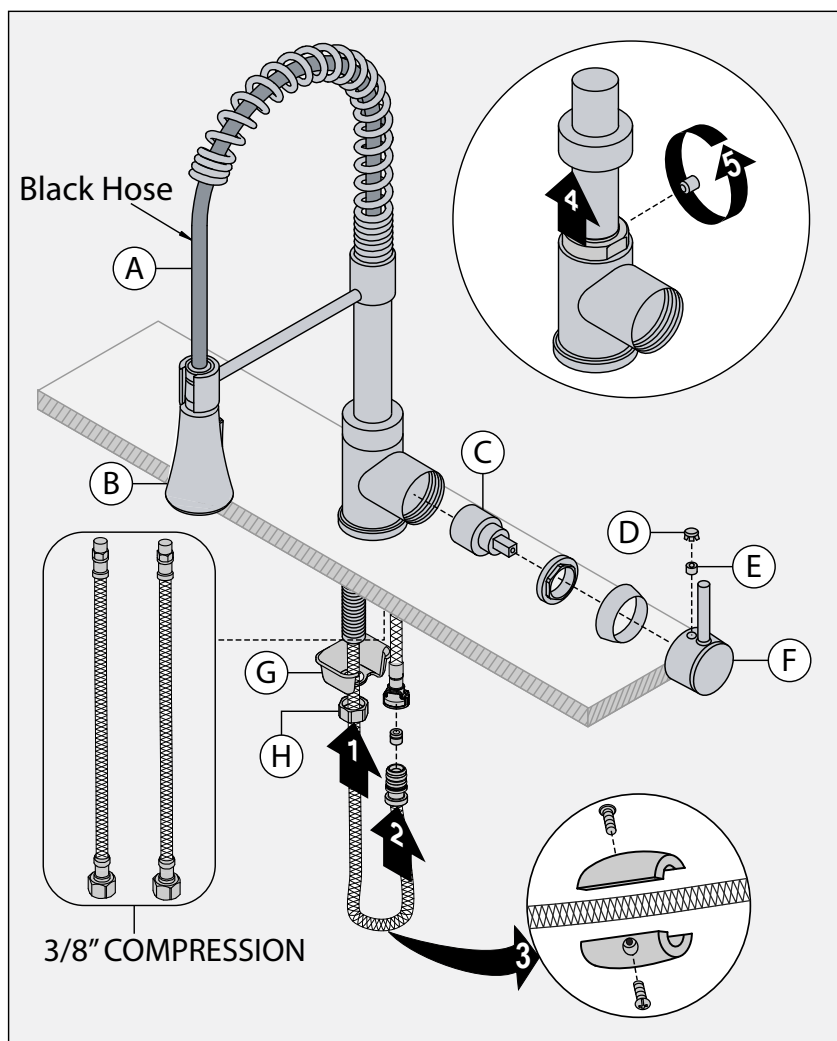
SPR3510PD
Spring Kitchen Faucet with Pull-Down Wand
Parts Breakdown Document





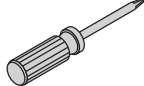

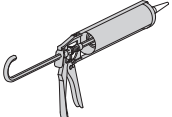
Model Numbers

SPR3510PD Spring Kitchen Faucet with Pull-Down Wand

Parts Breakdown



Replacement Parts		
Item	Description	Part Number
A	Pull-Down Wand Hose	RK092 (Black)
B	Pull-Down Wand	RK-030
C	Cartridge	KN-4
D	Plug Button	RK-009
E	Set Screw	
F	Handle	
G	Mounting Flange	RK-008
H	Mounting Nut	

Tools Required for Installation	
Adjustable Wrench	
Allen Wrench: Handle (2 mm) Spout (2 mm)	
Phillips Head Screwdriver	
Plumber Tape	
Silicone	

Notes:

- 1) Apply a bead of silicone around the perimeter of trim installed flush to sink.
- 2) Apply plumber tape to all threaded connections.