

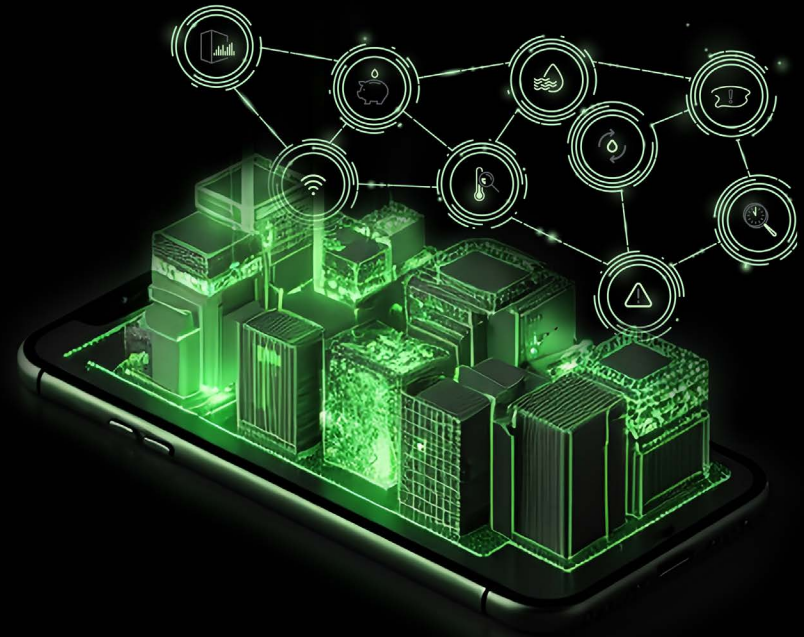


SYMMONS®

Always on Alert!

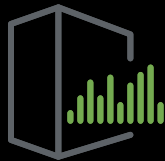
See what's going on inside your property's water system. Evolution gives time-tracked analyses and customizable 24/7 alerts for water temperature, flow, usage, and leaks.

Stay ahead of complaints, high bills, and property damage by pinpointing and solving chronic and intermittent water issues before they become costly.



Scalable Sensors

Evolution's wireless sensors alert you to catastrophic and chronic water issues so you can react fast and save your budget.



Mission Control

With the Evolution Dashboard, you'll see exactly when and where things go wrong, giving you time to resolve problems quickly.



No Downtime

Non-invasive technology eliminates the high installation costs, angry tenants, and system shutdowns associated with cutting into plumbing lines.

SYMMONS EVOLUTION®

LEADING-EDGE WATER MANAGEMENT TECHNOLOGY

Evolution gives complete property oversight, with time-tracked analyses and customizable 24/7 alerts for water temperature, flow, usage, and leaks to reduce operating costs.

Symmons Evolution has been recognized by CBRE as the winner of their **Best Sustainability Innovation Solution for 2024!**

Tracking Sustainability 24/7!

If you're involved with property oversight of commercial buildings, then you know that sustainability and water conservation are two key metrics for property design and management.

To meet today's strict environmental impact targets, properties need definitive, reportable data. Data that not only reflects everyday water patterns, but that also identifies anomalies and hidden wasted water.



Symmons Evolution is the leading-edge water management system that delivers real-time tracking to meet and maintain sustainability goals.

In fact, Symmons Evolution was recently awarded **CBRE's Best Sustainability Innovation Solution for 2024!**

Evolution's minute-by-minute flow monitoring data tracks water flow at the meter or on individual supply lines, and includes configurable 24/7 alerting via text, phone, or email.



See What Others Have to Say About Evolution!



A game-changer! After installing the Evolution system, we were able to determine which valves caused the problems... we were able to resolve those issues and get the domestic hot water working perfectly.

Unboxing Evolution®

Non-invasive sensors for temperature, flow, metering, and leaks that can be self-installed in less than two hours. Data is relayed to the Evolution Dashboard to alert staff 24/7 via when water issues occur!



Learn More About Evolution!

1 Temperature
Real-time temperature reporting for highly accurate readings of key mechanical system service points.

2 Flow
Current and historical water usage reporting from flow sensors to locate unknown wasted water.

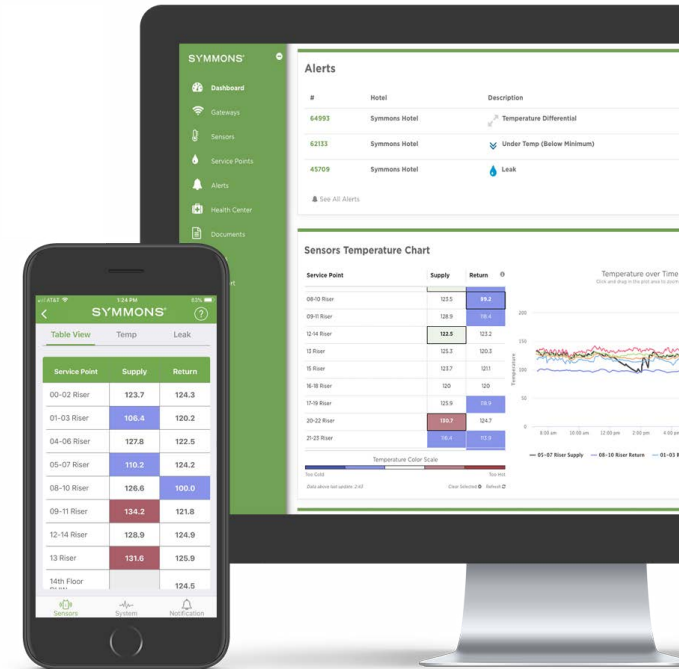
3 Usage
Non-invasive utility meter sensors identify inaccurate readings that lead to high water bills.

4 Leaks
Leak detectors located throughout your property notify you instantly to minimize property damage.

5 Network
Dedicated LoRa® network that's stronger and more stable than traditional Wi-Fi.

6 Alerts
Real-time notifications when your customized alert thresholds are reached or when a leak is detected.

7 24/7
Alert your property or staff directly 24/7 for any detected system emergencies.



Service Point	Supply	Return
00-02 Riser	123.7	124.3
01-03 Riser	106.4	120.2
04-06 Riser	127.8	122.5
05-07 Riser	110.2	124.2
08-10 Riser	126.6	100.0
09-11 Riser	134.2	121.8
12-14 Riser	128.9	124.9
13 Riser	131.6	126.9
14th Floor		124.5

#	Hotel	Description
64993	Symmons Hotel	Temperature Differential
62153	Symmons Hotel	Under Temp (Below Minimum)
45209	Symmons Hotel	Leak



1 (800) SYMMONS | SYMMONS.COM/EVOLUTION

Evolution's plug-and-play wireless sensors keep a close eye on all aspects of your building's water systems while lowering your operating costs.