




# Location:



## 5302-TRM, 5302TRMTC Tub/Shower Trim Specification Submittal



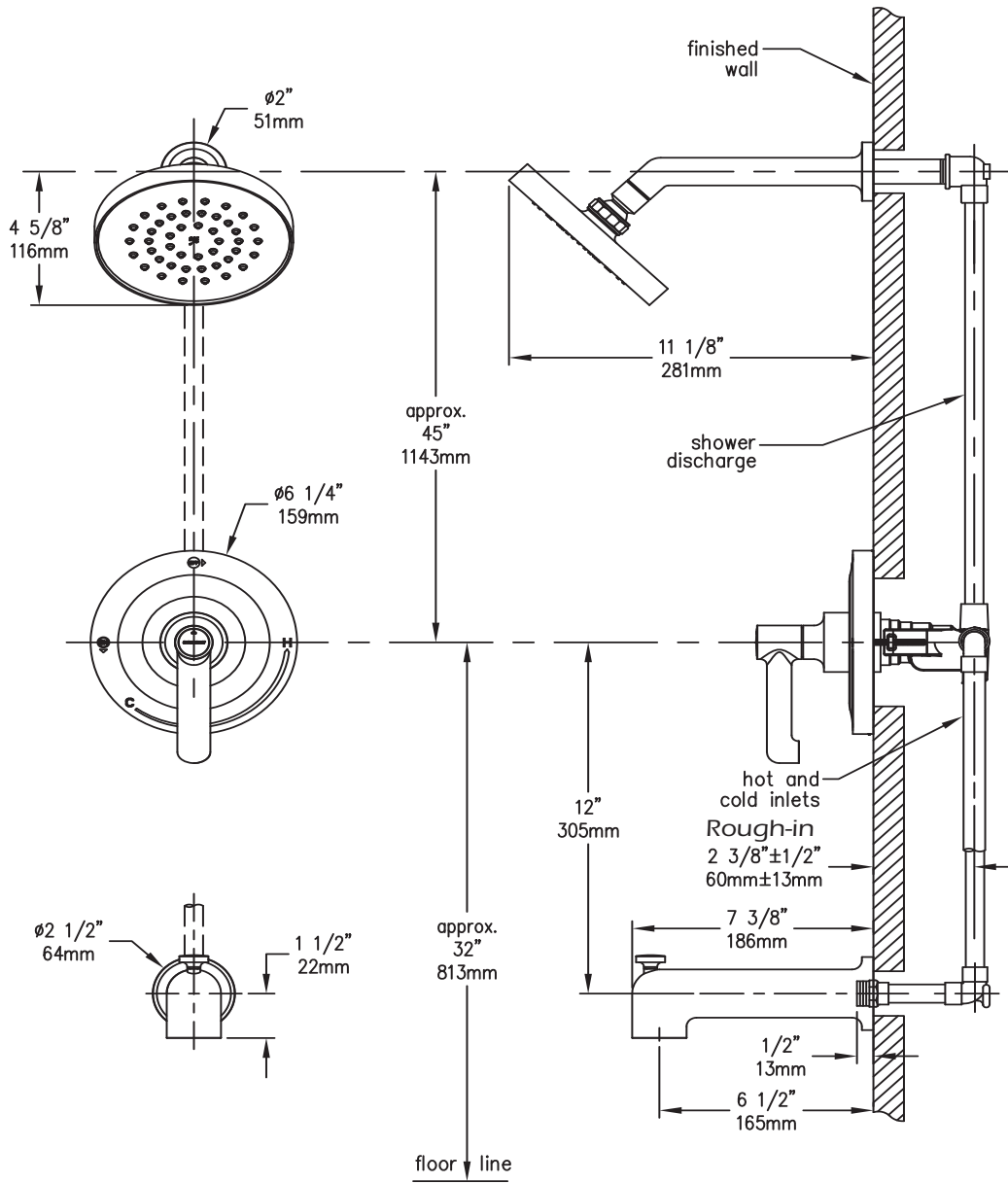
Feature Highlights	Options/Modifications
<ul style="list-style-type: none"><li>• Museo Tub/Shower Trim</li><li>• Requires Temptrol® Pressure Balancing Tub/Shower Valve</li><li>• Metal lever handle</li><li>• 7-1/8" diverter tub spout</li><li>• 1 mode showerhead</li><li>• 2.0 gpm (7.6 L/min) flow restrictor</li><li>• Components shall be metal and nonmetallic construction, plated in standard Polished Chrome finish</li><li>• Available with TA-10 flow control spindle and T-12A cap assembly for Temptrol valve bodies installed with Test Cap (order p/n 5302TRMTC)</li></ul>	<div><input type="checkbox"/> <b>-1.5</b>  <b>1.5 gpm (5.7 L/min) flow restrictor</b></div> <div><input type="checkbox"/> <b>-L1</b> <b>Less showerhead</b></div> <div><input type="checkbox"/> <b>-BLK</b> <b>Polished Graphite</b></div> <p><b>Note:</b> Append appropriate -suffix to model number.</p>
	<div><b>Compliance</b></div> <div><ul style="list-style-type: none"><li>• ASME A112.18.1/CSA B125.1</li></ul></div> <div></div>
Model Numbers	Warranty
<div><input type="checkbox"/> <b>5302-TRM</b> Tub/Shower Trim, Temptrol Pressure Balancing Tub/Shower Valve ordered separately</div> <div><input type="checkbox"/> <b>5302TRMTC</b> Tub/Shower Trim with TA-10 flow control spindle and T-12A cap assembly, must order Temptrol valve with Test Cap</div>	<div><b>Limited Lifetime</b> - to the original end purchaser in consumer/residential installations.</div> <div><b>10 Years</b> - for commercial/industrial installations. Refer to <a href="http://www.symmons.com/warranty">www.symmons.com/warranty</a> for complete warranty information.</div> <div></div>

## Architectural/ Engineering Specification

Symmons \_\_\_\_\_ With Museo Tub/Shower Trim, requires Temptrol® pressure balancing shower valve, metal lever handle, 7-1/8" diverter tub spout, 1 mode showerhead, 2.0 gpm (7.6 L/min) flow restrictor, components shall be metal and nonmetallic construction, plated in standard Polished Chrome finish, available with TA-10 flow control spindle and T-12A cap assembly for Temptrol valve bodies installed with Test Cap (order p/n 5401TRMTC). 10 Year commercial Warranty. ASME A112.18.1/CSA B125.1, Complaint. Available options include "1.5 - 1.5 gpm (5.7 L/min) flow restrictor", "L1 - Less showerhead", "BLK - Polished Graphite".

5302-TRM, 5302TRMTC

## Dimensions



### Notes:

- 1) Valve body and piping not included and shown as reference only.
- 2) Plaster shield (p/n T-176) for dry wall, plaster or other type walls  $1/2''$  or greater.
- 3) All dimensions measured from nominal rough-in.
- 4) Dimensions subject to change without notice.