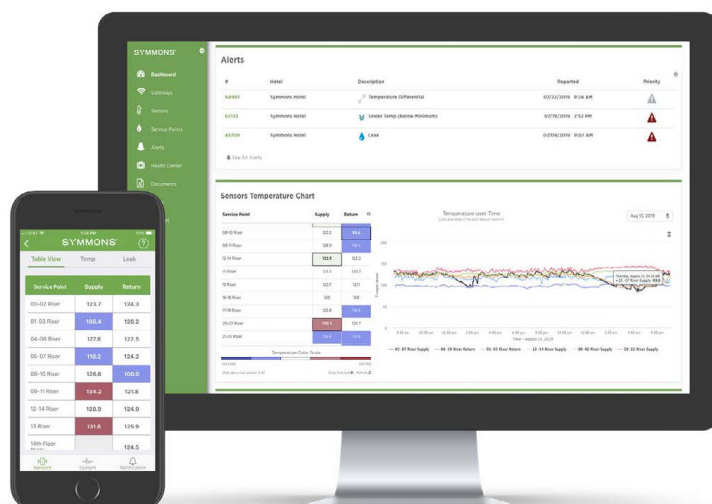


Symmons Evolution®

Delivering real-time flow monitoring and configurable 24/7 alerts to track water usage and support sustainability goals—earning CBRE’s Best Sustainability Innovation Solution for 2024!



ULTRASONIC FLOW SENSORS

Compatible with multiple piping materials, such as stainless steel, iron, copper, PVC, and resin. Sizes range from 1/2" all the way up to 8" diameter.



MISSION CONTROL

Evolution’s flow sensors use the same dashboard as its temperature, humidity, and leak detection sensors, so analysis is all in one place



NO DOWNTIME

Non-invasive technology eliminates high installation costs, angry tenants, and system shutdowns associated with cutting into plumbing lines.



TRACKING SUSTAINABILITY 24/7

If you’re involved with property oversight of commercial buildings, then you know that sustainability and water conservation are two key metrics for property design and management.

To meet today’s strict environmental impact targets, properties need definitive, reportable data. Data that not only reflects everyday water patterns, but that also identifies anomalies and hidden wasted water.

Symmons Evolution is the leading-edge water management system that delivers real-time tracking to meet and maintain sustainability goals.

In fact, Symmons Evolution was recently awarded **CBRE’s Best Sustainability Innovation Solution for 2024!**

Evolution’s minute-by-minute flow monitoring data tracks water flow at the meter or on individual supply lines, and includes configurable 24/7 alerting via text, phone, or email.



Evolution for Your Property



2. INSTALL SENSORS

Temperature, Flow, Usage,
or Leak Detection

3. SCAN QR CODES

Easily add your sensors to
the Evolution platform

1. SET UP GATEWAY

Scan code and Evolution
does the rest



4. IDENTIFY SENSORS

Add names and locations
to your sensors through the
Evolution app



5. ALL SET!

Evolution tracks data and alerts you to
leaks, chronic temperature issues, wasted
water, and wasted revenue

Unboxing Evolution



TEMPERATURE MONITORING

Non-invasive, strap-type sensors are compatible
with multiple piping materials and transmit data to
the Evolution Dashboard.

These wireless sensors for domestic hot water and
HVAC systems measure the water temperature
inside the piping to detect peaks and valleys that
lead to guest or tenant complaints.



WATER FLOW MONITORING

Ultrasonic non-invasive sensors clamp onto
various piping materials in sizes from 1/2-inch up
to 8-inch in diameter.

Water flow sensors constantly measure flow
rate to locate costly wasted water that would
otherwise go unnoticed.



USAGE REPORTING

External non-invasive sensors strap to municipal
and private utility meters to send time-tracked
data to the Evolution Dashboard.

Water utility meter sensors report true water
usage to identify wasted water or to reveal faulty
or inaccurate meters that lead to high water bills.



LEAK DETECTION

Evolution's specialized flexible rope-type leak
detection sensors are placed strategically
throughout key property locations.

These unique sensors have configurable
sensitivity and can prevent costly property
damage due to leaking equipment or seeping
groundwater.



DEDICATED NETWORK

The epicenter of the Evolution platform is its
Gateway, which self-installs and creates its own
dedicated LoRa® network that's stronger and
more stable than traditional Wi-Fi.



EMAIL/SMS ALERTS

Evolution sends real-time notifications when your
customized alert thresholds are reached or when
a leak is detected.



24/7 EMERGENCY CALL CENTER

Evolution can also alert your property or
staff directly 24/7 for any detected system
emergencies.

AWARD-WINNING TECHNOLOGY FOR SUSTAINABILITY

Symmons Evolution has been recognized by CBRE as the winner of
their Best Sustainability Innovation Solution for 2024!



SYMMONS®

Evolution Hardware & Software Pricing

11/01/24

Evolution Leak and Temperature Sensor Hardware Price / Each

Product	SKU	Description	Price
Pipe Temperature Sensor	EVOTEMP	Non-Invasive Clamp-On Temperature Sensor	\$164.45
Leak Sensor	EVOLMA1	Leak Sensor with Optional Detection Rope	\$164.45

Evolution Utility Meter Sensor Hardware Price / Each

Product	SKU	Description	Price
Single Utility Meter	EVOUM1KIT	Single Utility Meter Sensor, Clamp-On	\$506.00
Compound Utility Meter	EVOUM2KIT	Compound Utility Meter Sensor, Clamp-On	\$948.75

Evolution Ultrasonic Flow Sensor Hardware Price / Each

Product	SKU	Description	Price
Ultrasonic Flow Meter	EVOFQ038KIT	Flow Sensor, 1/4" to 3/8", Clamp-On	\$1,391.50
Ultrasonic Flow Meter	EVOFQ075KIT	Flow Sensor, 1/2" to 3/4", Clamp-On	\$1,391.50
Ultrasonic Flow Meter	EVOFQ125KIT	Flow Sensor, 1" to 1-1/4", Clamp-On	\$1,391.50
Ultrasonic Flow Meter	EVOFQ200KIT	Flow Sensor, 1-1/2" to 2", Clamp-On	\$1,960.75
Ultrasonic Flow Meter	EVOFR200KIT	Flow Sensor, 1-1/2" to 2", Clamp-On	\$2,213.75
Ultrasonic Flow Meter	EVOFR300KIT	Flow Sensor, 2-1/2" to 3", Clamp-On	\$3,289.00
Ultrasonic Flow Meter	EVOFR500KIT	Flow Sensor, 4" to 5", Clamp-On	\$3,731.75
Ultrasonic Flow Meter	EVOFR800KIT	Flow Sensor, 6" to 8", Clamp-On	\$4,048.00

Evolution Communications Gateway Hardware Price / Each

Product	SKU	Description	Price
Cellular Gateway	EVOGW10X	LoRaWAN®, Cellular Gateway, Multicarrier	\$721.05

Evolution Software Subscription

Product	SKU	Description	Price
Software Subscription	EVO1Y	1-Year Software Subscription, Per Sensor	\$375.00

AWARD-WINNING TECHNOLOGY FOR SUSTAINABILITY

Symmons Evolution has been recognized by CBRE as the winner of their Best Sustainability Innovation Solution for 2024!

Symmons Inc. All Rights Reserved.

