

## Parts Breakdown Document

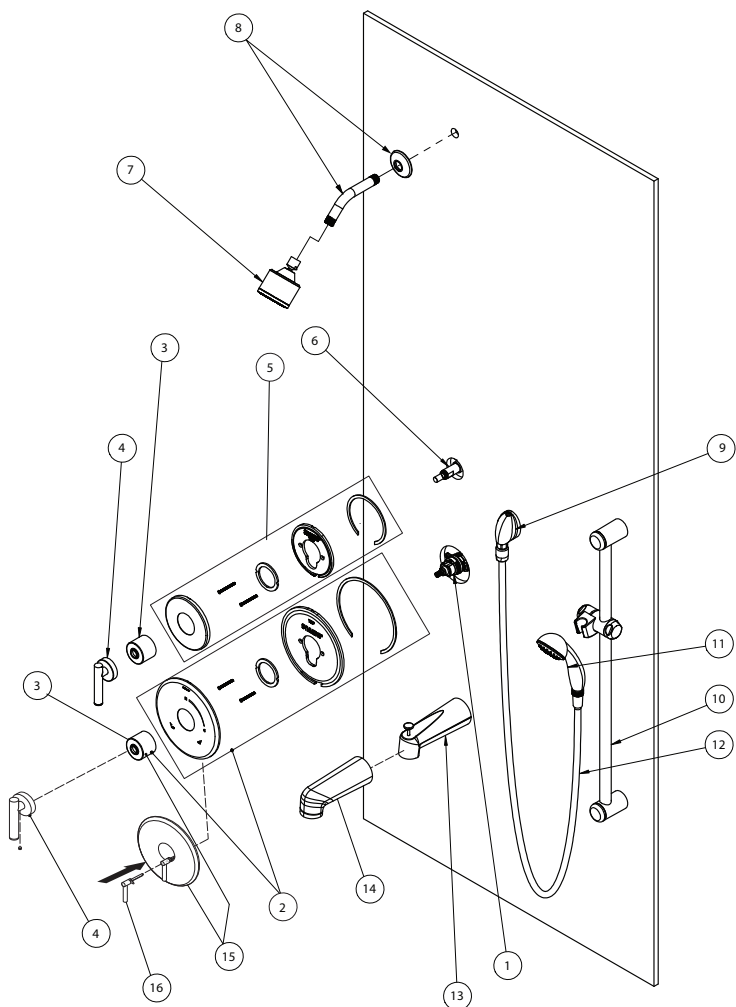
---

### Model Numbers

---

- |   |  |
|---|--|
| <input type="checkbox"/> 3500: Dia Shower Valve Trim, Valve only  | <input type="checkbox"/> S3500: Dia Shower Valve Trim, Valve only with Diverter Lever                                  |
| <input type="checkbox"/> 3501: Dia Shower Valve Trim, with Showerhead   | <input type="checkbox"/> S3501: Dia Shower Trim, with Showerhead and Diverter Lever                                    |
| <input type="checkbox"/> 3502: Dia Tub/Shower Trim, with Showerhead   | <input type="checkbox"/> S3502: Dia Tub/Shower Trim, with Showerhead and Diverter Lever                                |
| <input type="checkbox"/> 3503: Dia Shower Trim, with Hand Shower System   | <input type="checkbox"/> S3503: Dia Shower Trim, with Hand Shower System and Diverter Lever                            |
| <input type="checkbox"/> 3504: Dia Tub/Shower Trim, with Hand Shower System and Tub Spout                             | <input type="checkbox"/> S3504: Dia Tub/Shower Trim, with Hand Shower System, Diverter Lever, and Tub Spout            |
| <input type="checkbox"/> 3505: Dia Shower Trim, with Diverter Trim, Showerhead, and Hand Shower System                | <input type="checkbox"/> S3505: Dia Shower Trim, with Showerhead, Diverter Lever, and Hand Shower System               |
| <input type="checkbox"/> 3506: Dia Tub/Shower Trim, with Diverter Trim, Tub Spout, Showerhead, and Hand Shower System | <input type="checkbox"/> S3506: Dia Tub/Shower Trim with Diverter Lever, Showerhead, Hand Shower System, and Tub Spout |
|   | <input type="checkbox"/> S3508: Dia Shower Trim with Diverter Lever, Shower head, and Hand Shower System               |

## Parts Breakdown



#	Description	Part Number
1	Spindle, Temptrol	TA-10
	Cap Assembly	T-12A
2	Circle escutcheon kit	RTS-009*
	Circle escutcheon kit (Plastic)	RTS-010*
3	Dome, cover	T-19*
4	Diverter Handle, lever	T-242A*
5	Diverter escutcheon kit	T-416A*
6	Diverter Assembly, 4 port	3DIVBODYSRT (3DIVBODYSRTNS for California)
	Diverter Assembly, 3 port	2DIVBODYSRT (2DIVBODYSRTNS for California)
7	Showerhead, single mode, Dia	352SH*
8	Shower arm	300S*
9	Elbow, type 2 drop	EF-105*
10	Assembly, slide bar, 30"	RA-009*
11	Hand shower	EF-100*
12	Hose 5'	EF-104*
13	Diverter tub spout (thread on)	352TS*
14	Tub spout (thread on)	O67*
15	S Valve Escutcheon Kit	RTS-011*
	S Valve Escutcheon Kit (Plastic)	RTS-012*
16	Diverter Lever (metal escutcheon)	RTS-013*
	Diverter Lever (plastic escutcheon)	RTS-014*

\*If finish is OTHER than chrome, part requires finish modifier

### Finish Modifiers:

- BBZ - Brushed Bronze finish
- MB - Matte Black finish
- STN - Satin Nickel finish