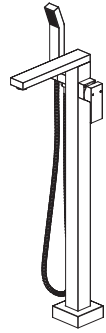




SYMMONS®



DURO™



FSTF367220

Floor Standing Tub Filler

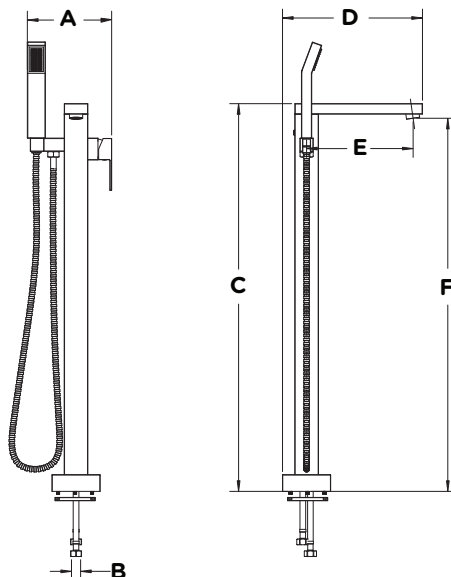
Specification Submittal

| Model Numbers | Feature Highlights |
|--|---|
| <input type="checkbox"/> FSTF367220 <i>Floor standing tub filler</i> | <ul style="list-style-type: none">• Ceramic cartridge• Push button to divert from spout to hand shower• 60" flexible metal hose• 1 mode hand shower with dual check valves• 2.0 gpm (7.6 L/min) hand shower• Floor Standing Tub Filler shall be metal construction plated in standard polished chrome finish• 5.3 gpm (20.1 L/min) at 45 psi tub filler• 6.5 gpm (24.6 L/min) at 60 psi tub filler |
| Options/ Modifications | |
| <input type="checkbox"/> STN <i>Satin nickel finish</i> <input type="checkbox"/> MB <i>Matte black finish</i> <input type="checkbox"/> BBZ <i>Brushed bronze finish</i> | |
| Note: Append appropriate -suffix to model number. | |
| Compliance | Warranty |
| <ul style="list-style-type: none">- ASME A112.18.1- CSA B125.1  | <p>Limited Lifetime - to the original end purchaser in consumer/residential installations.</p> <p>10 Years - for commercial/industrial installations. Refer to www.symmons.com/warranty for complete warranty information.</p>  |

Architectural/Engineering Specification

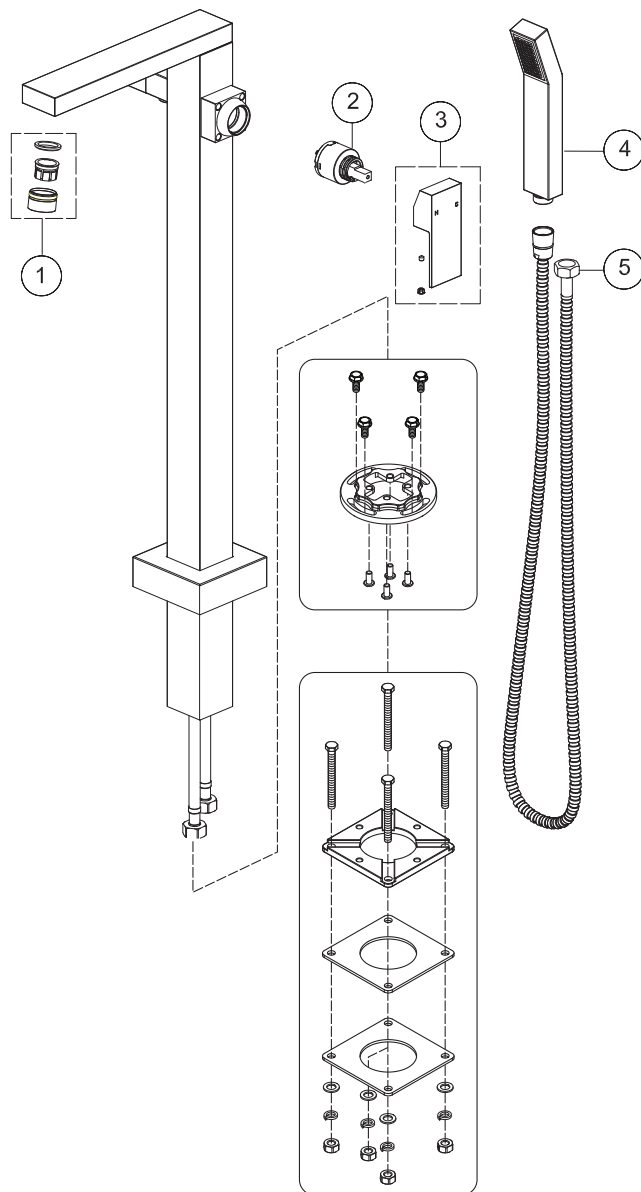
Floor standing tub filler with ceramic cartridge and push button to divert from spout to hand shower. Includes 60" flexible metal hose, 1 mode hand shower with dual check valves and a 2.0 gpm (7.6L/min) hand shower. Modifications include "Satin nickel finish", "Matte black finish", and "Brushed bronze finish".

Dimensions



| Measurements | |
|--------------|-----------------|
| A | 7", 178mm |
| B | 2X1/2-14NPSM |
| C | 32-5/16", 821mm |
| D | 11-5/8", 296mm |
| E | 8-7/8", 225mm |
| F | 31-1/8", 790mm |

Installation/Parts Breakdown



| Item | Description | Part Number |
|------|----------------------------------|-------------|
| 1 | Stream Straightner, with housing | FLR-06026* |
| 2 | Cartridge | RT-05173 |
| 3 | Handle Kit | RT-06025* |
| 4 | Hand Shower | RT-06027* |
| 5 | 60" HOSE | RTS-045* |

*Note: Append -STN, -MB, or -BBZ to part number for premium finish.

| Tools Required | |
|---------------------------|--|
| Adjustable Wrench | |
| Drill | |
| Phillips Head Screwdriver | |
| Plumber Tape | |
| Safety Glasses | |
| Silicone | |

Installation Notes:

- 1) Apply a bead of silicone around the perimeter of all faucet trim installed to deck surface.
- 2) Apply plumber tape to threaded connections as necessary. DO NOT use plumber tape on fittings with face seal washers or o-rings.
- 3) DO NOT OVERTIGHTEN fittings with face seal washers or o-rings.

