



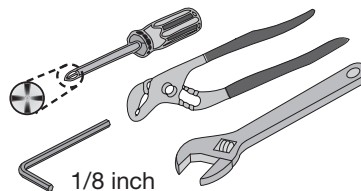
## Kitchen Faucet S-2620-L

### Installation and Service Instructions

#### Model Numbers

S-2620-L ..... Chrome finish  
S-2620-STN-L .... Satin Nickel finish  
S-2620-STS-L .... Stainless Steel finish

#### Tools & Materials



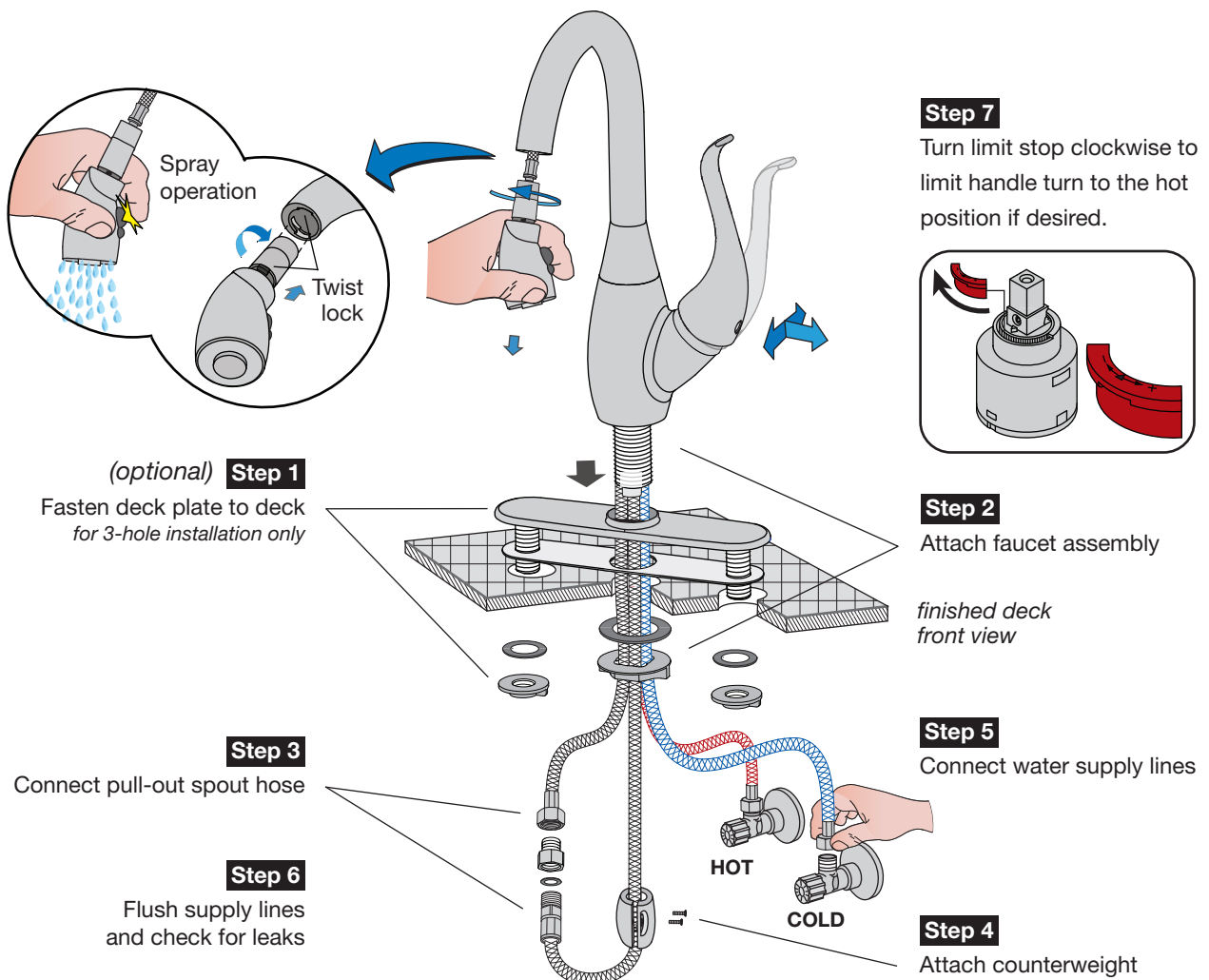
#### ☎ Need Help?

Symmons customer service:  
(800) 796-6667, (781) 848-2250  
Email: [customerservice@symmons.com](mailto:customerservice@symmons.com)  
Monday - Friday 7:30 am - 6:00 pm EST

 [www.symmons.com/service](http://www.symmons.com/service)

- Technical help
- Product information
- Warranty policy.

### Quick Install Guide Moscato Kitchen Faucet, S-2620-L

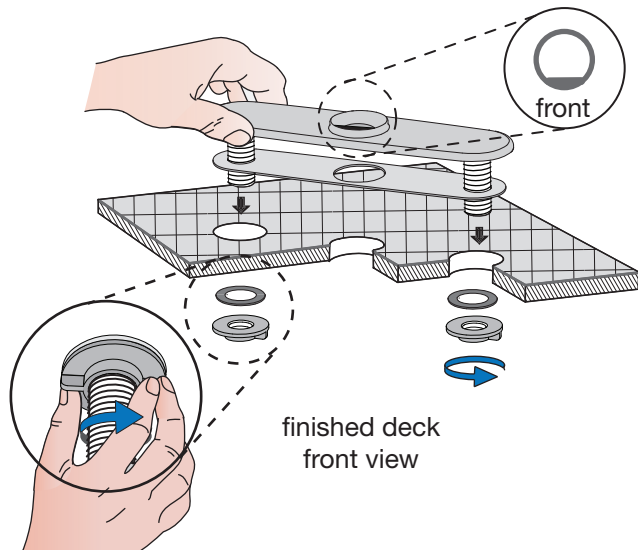


## Installation Instructions

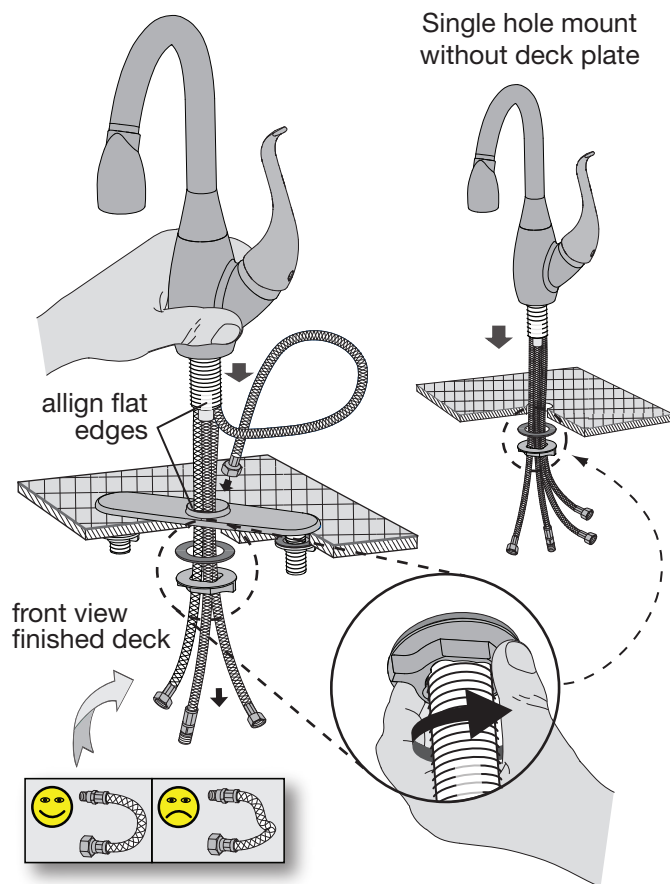
**Caution:** If replacing an older faucet ensure water supply is turned OFF before removing and then turn faucet ON to relieve water pressure.

### Step 1 Attach deck plate to deck (optional)

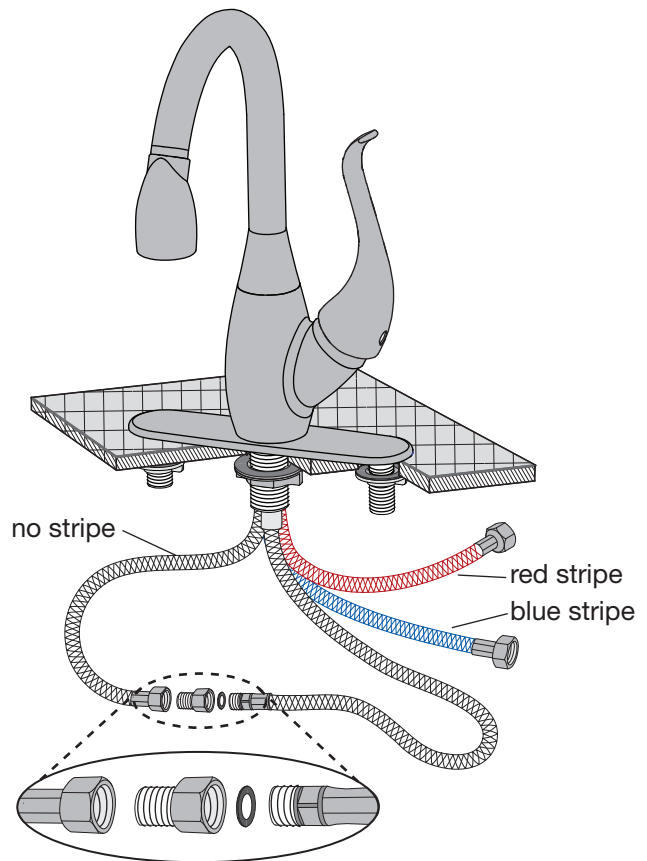
*Deck plate is typically used for covering existing holes when faucet is being replaced. Install as required.*



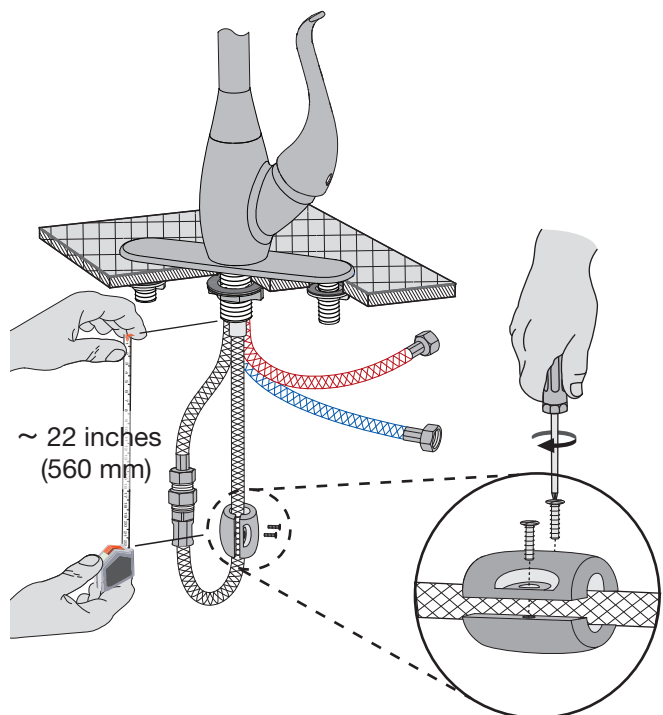
## Step 2 Attach faucet assembly to deck



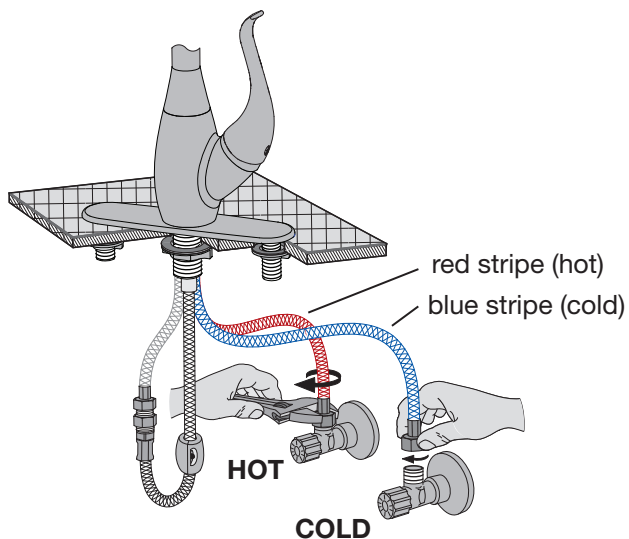
### Step 3 Connect pull-out spout hose



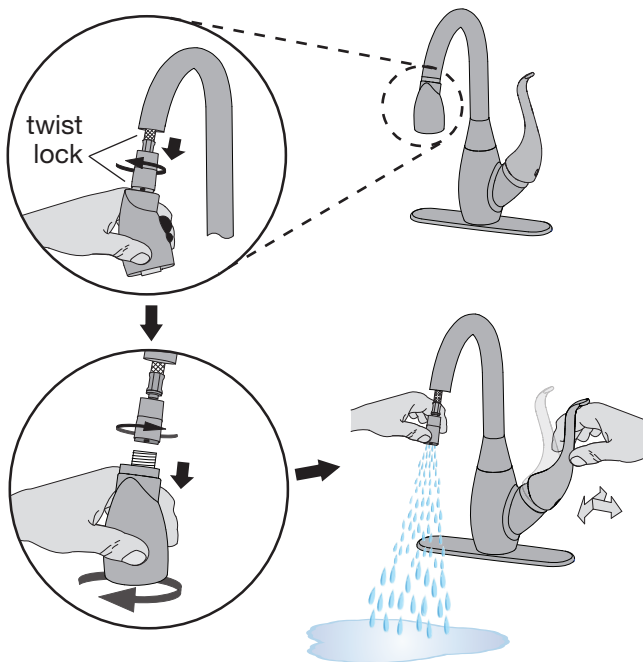
### Step 4 Attach counterweight to hose



## Step 5 Connect water supply lines



## Step 6 Flush supply lines and check for leaks

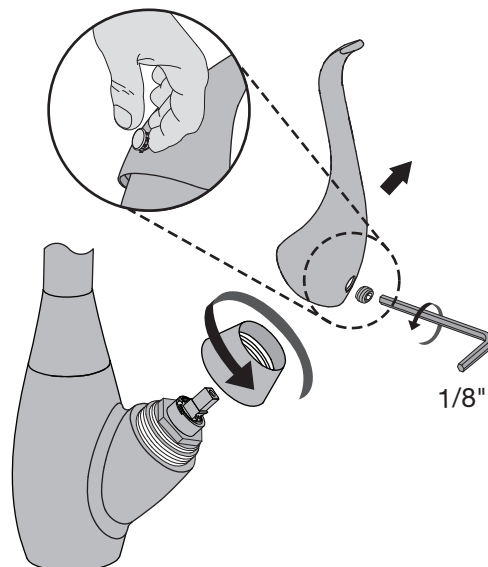


## Care of faucet finish

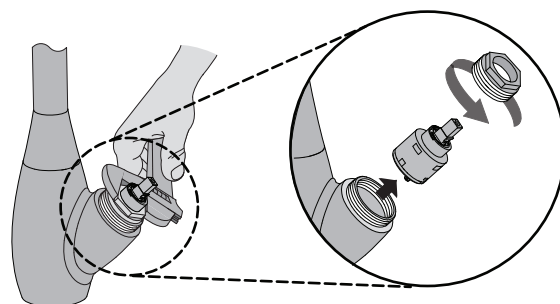
Clean finish area by using mild soap and water or non-abrasive cleaner and then rinse immediately. A non-abrasive wax may be used to preserve finish area.

## Valve cartridge replacement

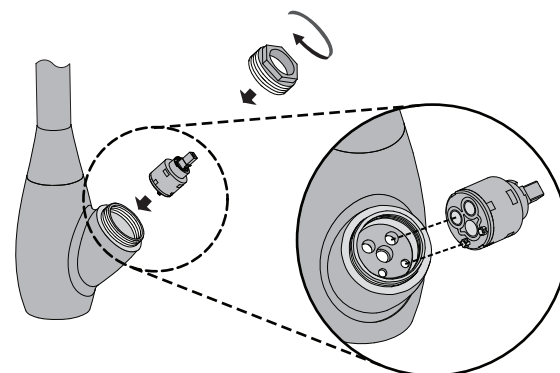
1



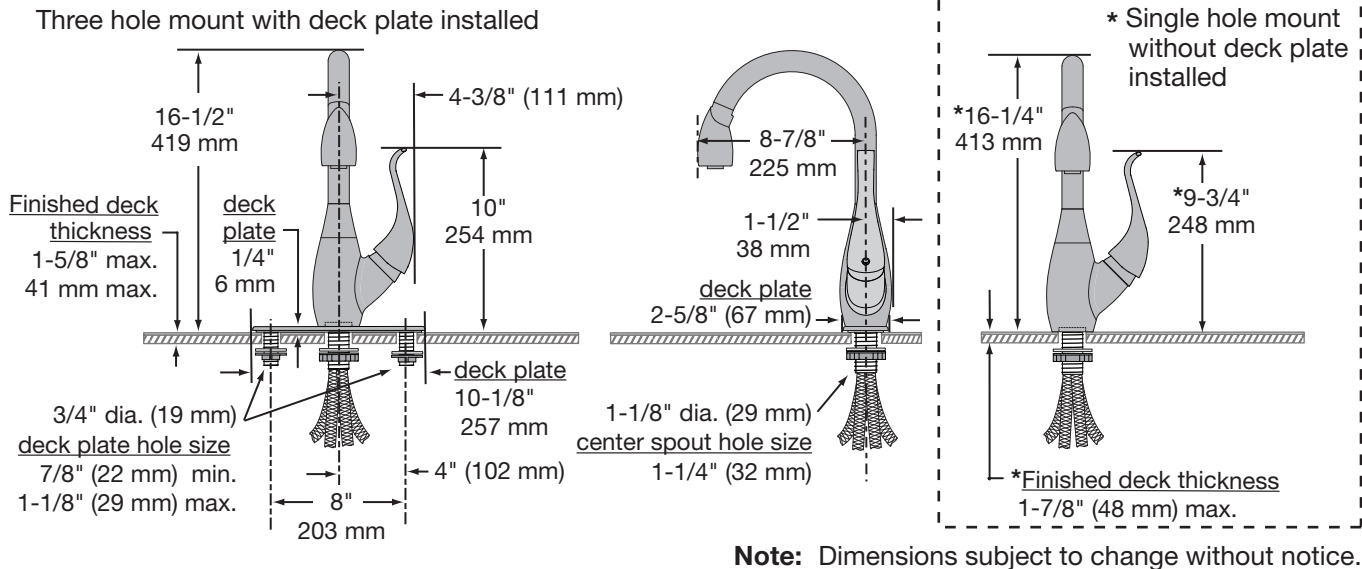
2



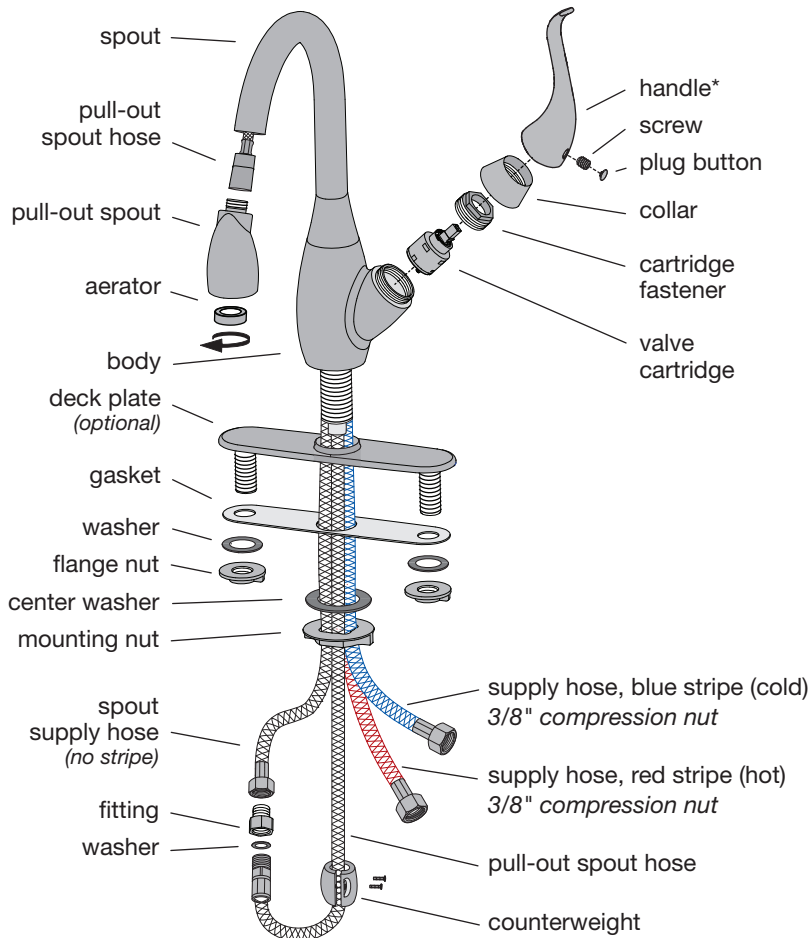
3





## Dimensions *Moscato Kitchen Faucet, S-2620-L*



## Parts Assembly *Moscato Kitchen Faucet, S-2620-L*



Replacement Parts	
Part Number	Item
KN-4	valve cartridge 
KN-281*	handle screw plug button 

### Ordering replacement parts:

Symmons customer service: (800) 796-6667, (781) 848-2250 M-F 8:00 am - 7:30 pm EST  
Symmons distributors: [www.symmons.com](http://www.symmons.com)

\*Note: For decorative finish faucets add appropriate suffix code letters to part numbers marked with an asterisk (\*)

**WARNING:** This product can expose you to chemicals including lead, which is known to the state of California to cause cancer, birth defects, or other reproductive harm. For more information, go to [www.P65Warnings.ca.gov](http://www.P65Warnings.ca.gov).

Symmons Industries, Inc. ■ 31 Brooks Drive ■ Braintree, MA 02184 ■ Phone: (800) 796-6667 ■ Fax: (800) 961-9621  
Copyright © 2019 Symmons Industries, Inc. ■ [symmons.com](http://symmons.com) ■ [gethelp@symmons.com](mailto:gethelp@symmons.com) ■ ZV-548 REV C ■ 060419