
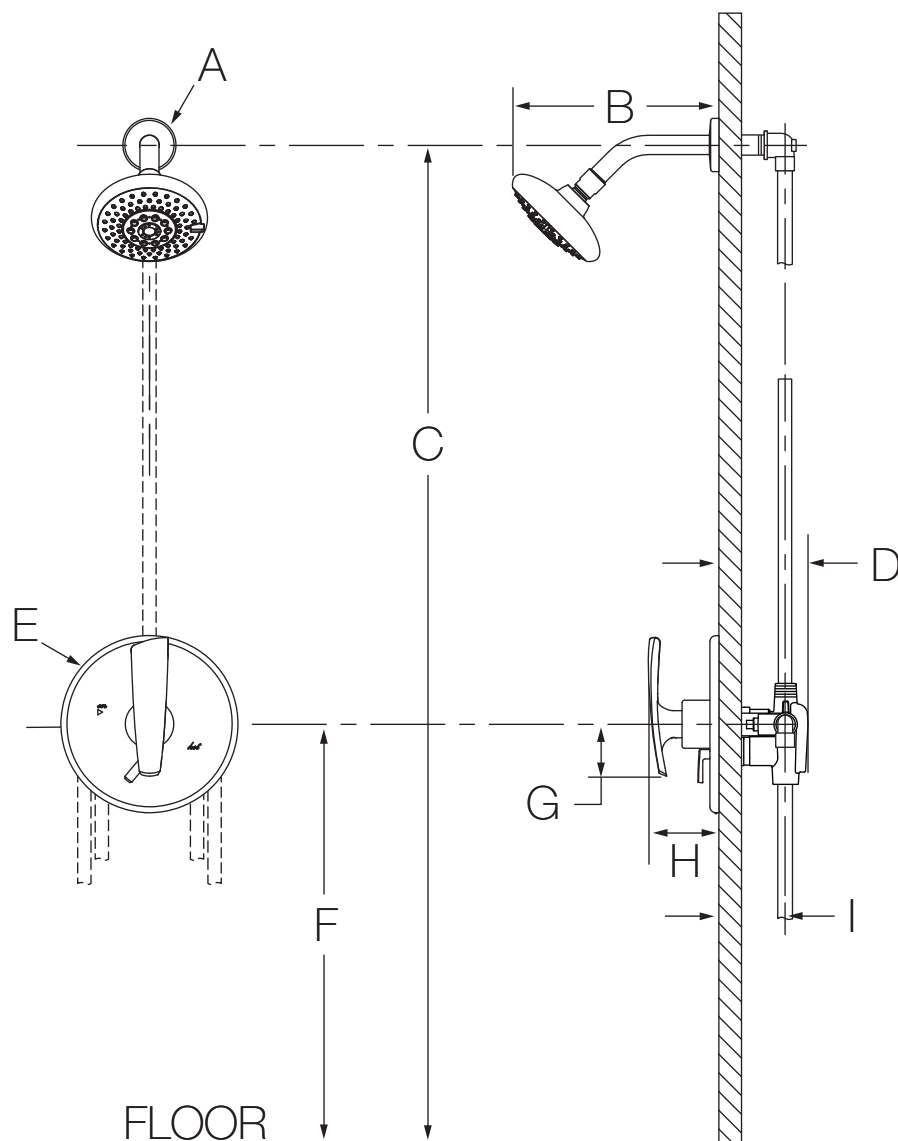


S-4101-TRM, S4101TRMTC  
Shower Trim  
**Specification Submittal**



Feature Highlights	Options/Modifications
<ul style="list-style-type: none"> <li>Naru Shower Trim</li> <li>Requires Temptrol® Pressure Balancing Shower Valve</li> <li>Integral volume control</li> <li>Metal lever handle</li> <li>3 mode showerhead</li> <li>2.5 gpm (9.5 L/min) flow restrictor</li> <li>Tub spout not included</li> <li>Components shall be metal and nonmetallic construction, plated in standard Polished Chrome finish</li> <li>Available with TA-10 flow control spindle and T-12A cap assembly for Temptrol valve bodies installed with Test Cap (order p/n S4101TRMTC)</li> </ul>	<div> <input type="checkbox"/> <b>-1.5</b> <div>CG</div> 1.5 gpm (5.7 L/min) flow restrictor </div> <div> <input type="checkbox"/> <b>-2.0</b> 2.0 gpm (7.6 L/min) flow restrictor </div> <div> <input type="checkbox"/> <b>-L1</b> Less showerhead </div> <div> <input type="checkbox"/> <b>-PNL</b> Polished Nickel finish </div> <div> <input type="checkbox"/> <b>-STN</b> Satin Nickel finish </div> <p><b>Note:</b> Append appropriate -suffix to model number.</p>
Model Numbers	
<div> <input type="checkbox"/> <b>S-4101-TRM</b> Shower Trim with integral volume control, Temptrol Pressure Balancing Shower Valve ordered separately </div> <div> <input type="checkbox"/> <b>S4101TRMTC</b> Shower Trim with integral volume control, TA-10 flow control spindle and T-12A cap assembly, must order Temptrol valve with Test Cap </div>	
Compliance	
<ul style="list-style-type: none"> <li>ASME A112.18.1/CSA B125.1</li> </ul> <div>  </div>	
Warranty	
<p><b>Limited Lifetime</b> - to the original end purchaser in consumer/residential installations.</p> <p><b>5 Years</b> - for industrial/commercial installations.</p> <p>Refer to <a href="http://www.symmons.com/warranty">www.symmons.com/warranty</a> for complete warranty information.</p> <p>Go to <a href="http://www.symmons.com/register">www.symmons.com/register</a> to register your Symmons product.</p>	

## Dimensions



Measurements	
A	Ø 2-1/4", 57 mm
B	8-1/4", 210 mm
C	Ref. 77", 1956 mm
D	3-1/2", 89 mm
E	Ø 7-1/2", 191 mm
F	Ref. 42", 1067 mm
G	2-1/4", 57 mm
H	3", 76 mm
I	Rough-in 2-3/8" ± 1/2", 60 mm ± 13 mm

### Notes:

- 1) Valve body and piping not included and shown as reference only.
- 2) Plaster shield (p/n T-176) for dry wall, plaster or other type walls 1/2" or greater.
- 3) All dimensions measured from nominal rough-in (see I as reference).
- 4) Dimensions subject to change without notice.