



# SYMMONS® Identity™



## SK6710PD Single Handle Pull-Down Kitchen Faucet Operation & Maintenance Manual

### Model Numbers

- **SK6710PD** *Single Handle Pull-Down Kitchen Faucet*

### Compliance

-ASME A112.18.1/CSA B125.1

-NSF/ANSI/CAN 61: Q<1, NSF/ANSI 372



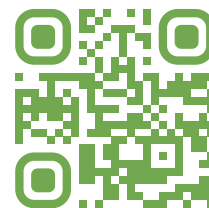
### Feature Highlights

- Single hole mount configuration
- 3 hole mount configuration with optional 8" deck plate
- Two mode wand (spray to stream touch control & standard)
- 360 degree spout rotation
- Quarter turn ceramic cartridge
- 25 inch braided hose water supply connections
- Standard 1.5 gpm (5.7 L/min) flow rate
- Components shall be metal and nonmetallic construction, plated in standard polished chrome finish

### Warranty

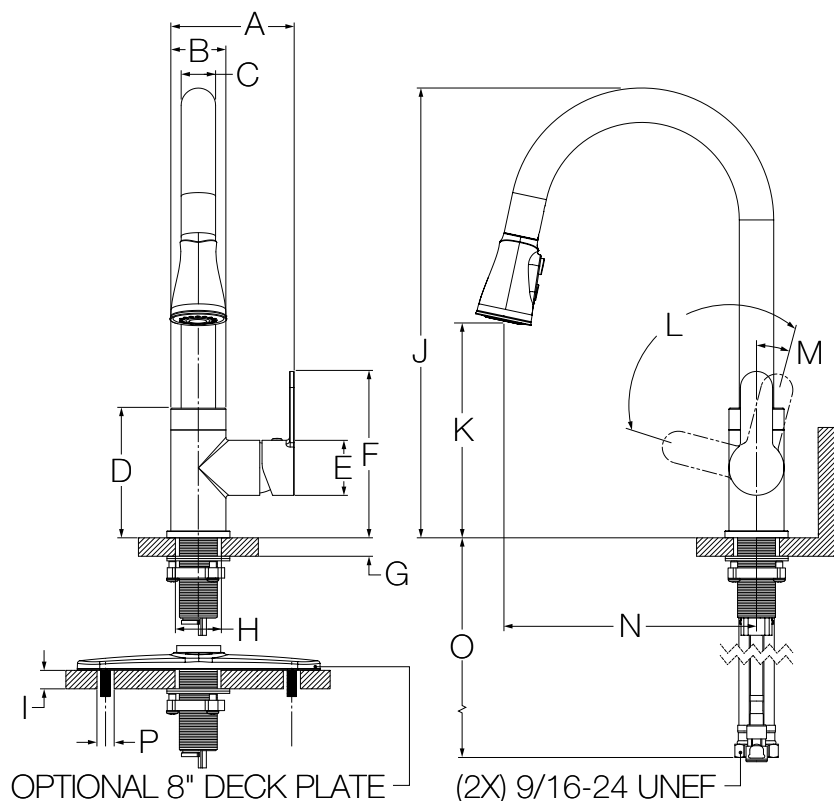
**Limited Lifetime** - to the original end purchaser in consumer/residential installations.

**10 Years** - for commercial/industrial installations. Refer to [www.symmons.com/warranty](http://www.symmons.com/warranty) for complete warranty information.



**⚠ WARNING:** This product can expose you to chemicals including lead, which is known to the state of California to cause cancer, birth defects, or other reproductive harm. For more information, go to [www.P65Warnings.ca.gov](http://www.P65Warnings.ca.gov).

### Dimensions

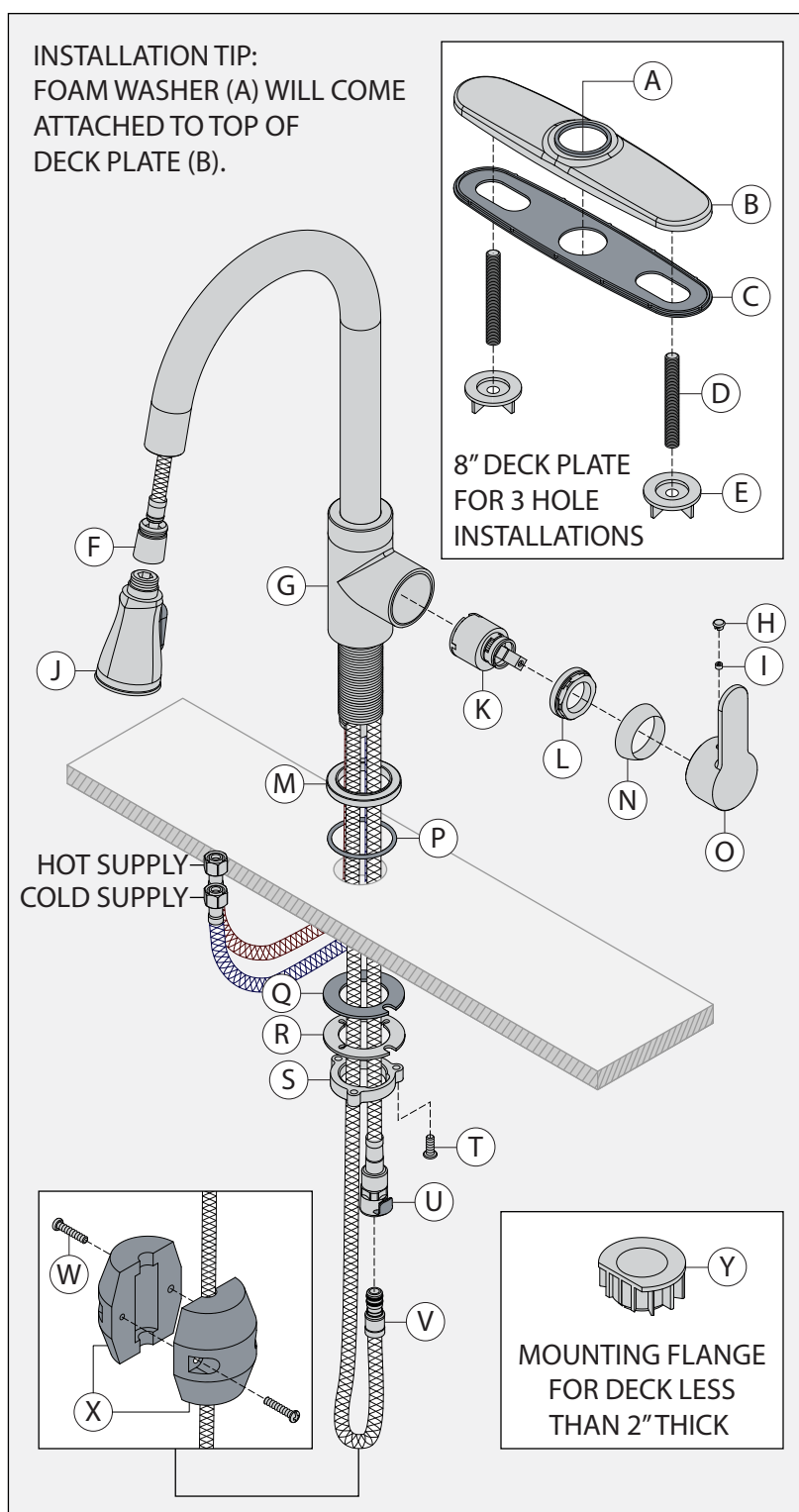


### Measurements

|   |   |
|---|---|
| A | 4-1/4", 108 mm  |
| B | Ø 1-7/8", 48 mm   |
| C | 1-3/16", 30 mm  |
| D | 4-7/16", 113 mm   |
| E | Ø 1-7/8", 48 mm   |
| F | 5-23/32", 145 mm  |
| G | Deck Thickness Ref.<br>Max. 1-3/4", 45 mm                 |
| H | Hole Size<br>Min. Ø 1-3/8", 35 mm<br>Max. Ø 1-1/2", 38 mm |
| I | Deck Thickness Ref.<br>Max. 1-1/2", 38 mm                 |
| J | 15-7/16", 392 mm  |
| K | 7-7/16", 189 mm   |
| L | 90 degrees  |
| M | 15 degrees  |
| N | 8-11/16", 221 mm  |
| O | 25", 635 mm   |
| P | (2x) Hole Size<br>Min. Ø 7-16", 11 mm                     |

**Note:** Dimensions subject to change without notice.

## Parts Breakdown



### Notes:

- 1) Apply a bead of silicone around the perimeter of trim installed flush to sink.
- 2) Apply plumber tape to all threaded connections.

## Replacement Parts

| Item | Description        | Part Number |
|------|--------------------|-------------|
| A    | Foam Washer        |             |
| B    | 8" Deck Plate      |             |
| C    | Mounting Gasket    |             |
| D    | (2x) Studs         | RK-058*     |
| E    | (2x) Mounting Nuts |             |
| F    | Pull-Down Hose     | RK-052      |
| J    | Spray Wand (1.5)   | RK-051-1.5* |
|      | Spray Wand (2.2)   | RK-051-2.2* |
| K    | Cartridge          | KN-04170    |
| H    | Plug Button        |             |
| I    | Set Screw          |             |
| O    | Handle             | RK-050*     |
| Q    | Rubber Washer      |             |
| R    | Metal Washer       |             |
| S    | Mounting Nut       |             |
| T    | (3x) Screws        | RK-053      |

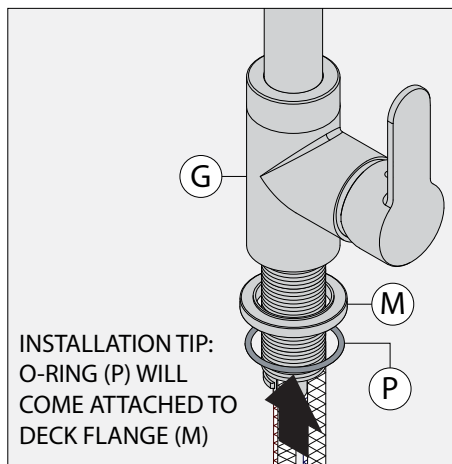
**\*Note:** Append appropriate -suffix to repair part number for premium finish.

## Tools Required for Installation

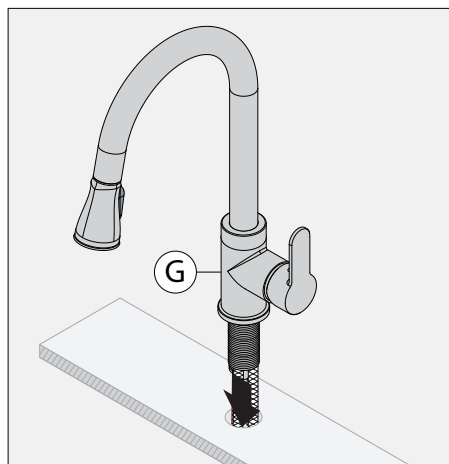
|                                  |  |
|----------------------------------|--|
| Adjustable Wrench                |  |
| Allen Wrench:<br>Handle (2.5 mm) |  |
| Phillips Head<br>Screwdriver     |  |
| Plumber Tape                     |  |
| Silicone                         |  |

## Installation

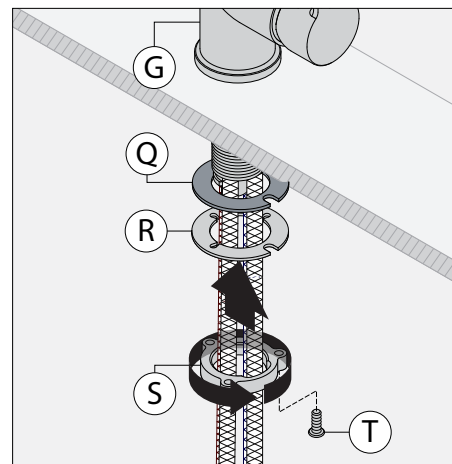
**!** Water lines **MUST** be thoroughly flushed **BEFORE** and **AFTER** installing the faucet to prevent foreign matter i.e. copper chips, sand, stones, etc. from clogging and possibly damaging the sealing surfaces of the cartridge.



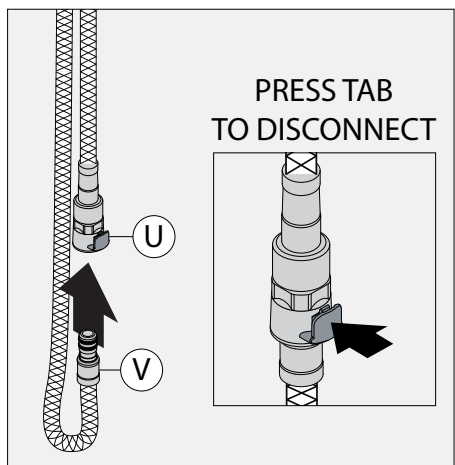
1) Press deck flange (M) against faucet body (G).



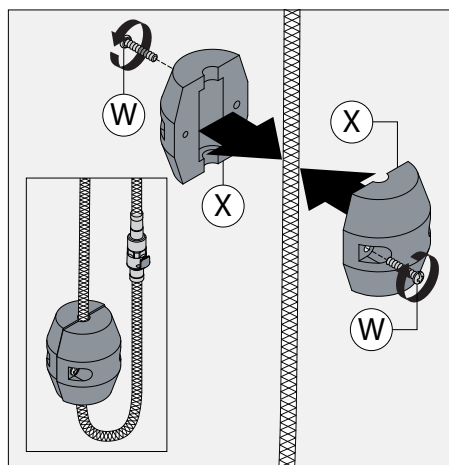
2) Install faucet body (G), supply hoses and pull-down hose to deck surface.



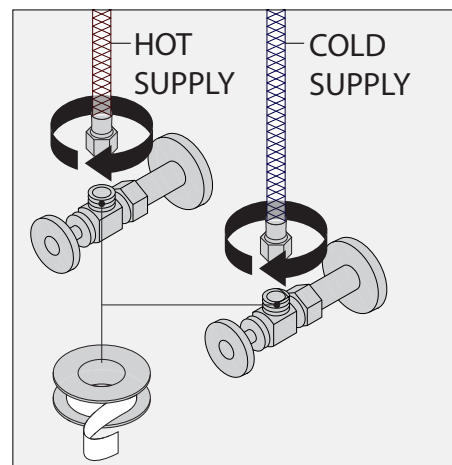
3) Install rubber washer (Q), metal washer (R) and mounting nut (S) to faucet body (G). Secure to bottom of deck with 3x mounting screws (T).



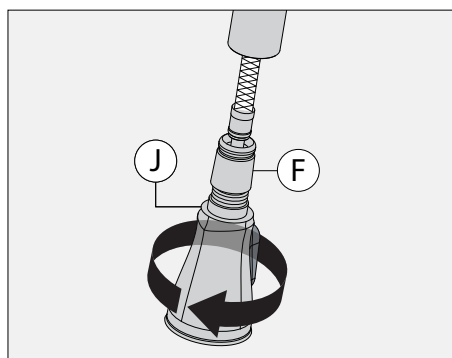
4) Attach outlet end of pull-down hose (V) to hose adapter (U). Press tab on hose adapter (U) to disconnect as shown above.



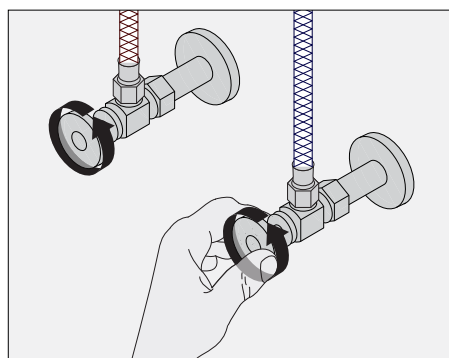
5) Attach counterweight (X) to outlet end of pull-down hose. Counterweight should be placed above the hose loop. Secure with 2x screws (W).



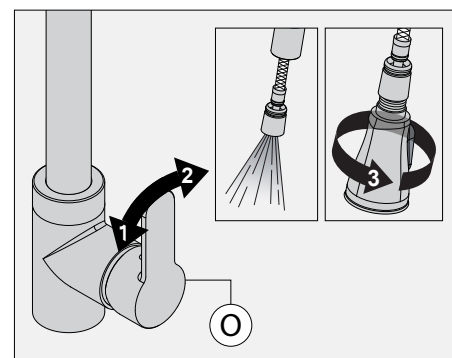
6) Connect hot supply hose (red stripe) and cold supply hose (blue stripe) to supply outlets.



7) Remove spray wand (J) from pull-down hose coupling (F).

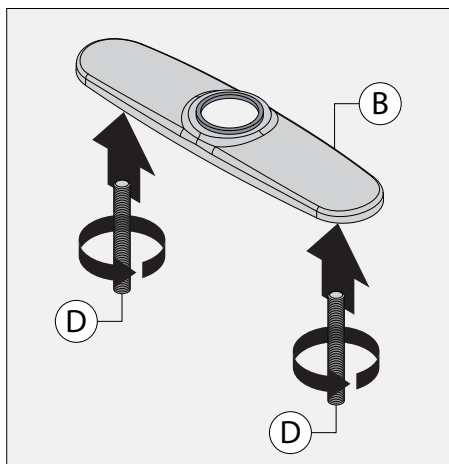


8) Turn on water supplies to flush lines.

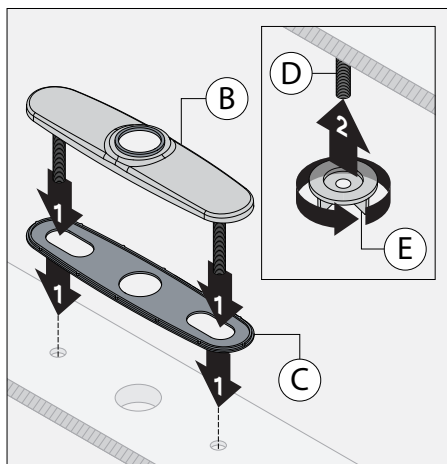


9) Turn handle (O) slowly toward you and then away. Check for leaks.

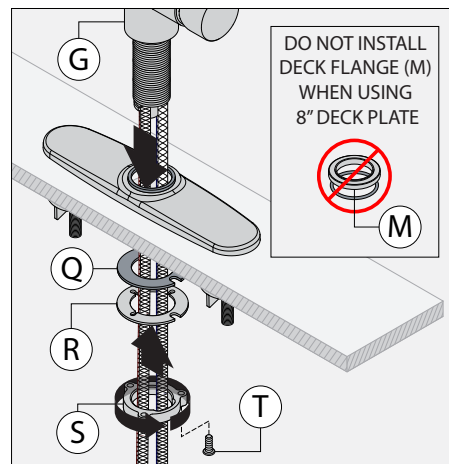
## Installation (for 8" deck plate)



1) Thread studs (D) into deck plate (B).

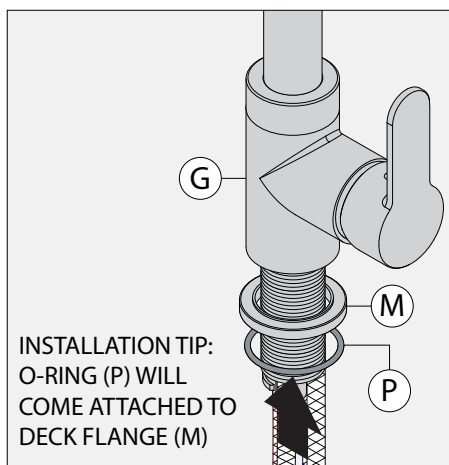


2) Install deck plate (B) and gasket (C) to deck surface. Thread mounting nuts (E) to studs (D) to secure deck plate (B) under deck.

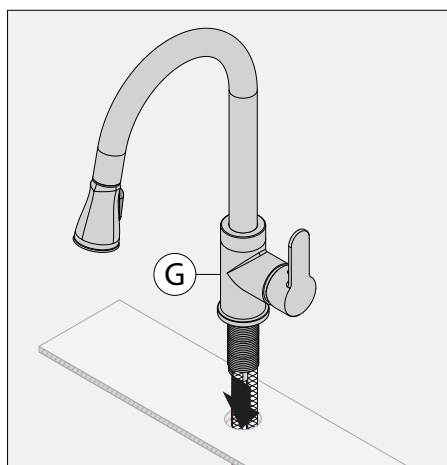


3) Insert faucet body (G) and faucet hoses through deck plate (B). Follow step 3 instructions (page 1) to secure faucet to deck.

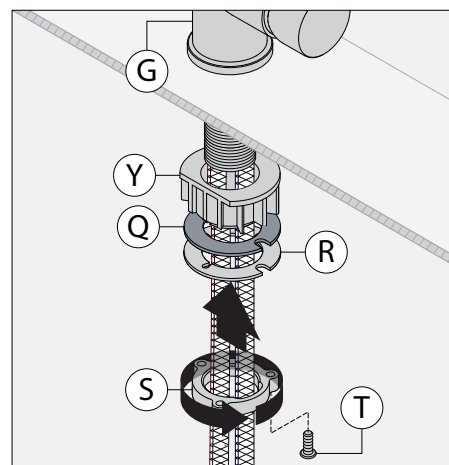
## Installation (for deck less than 1/2")



1) Press deck flange (M) against faucet body (G).

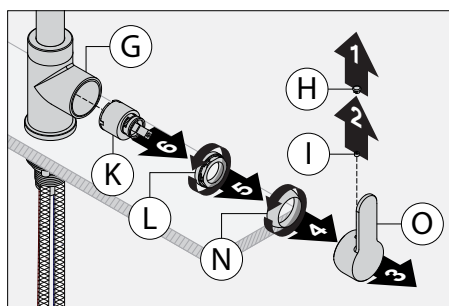


2) Install faucet body (G), supply hoses and pull-down hose to deck surface.

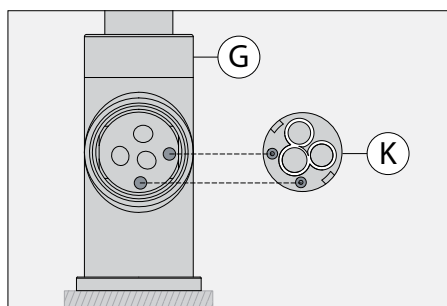


3) Secure faucet body (G) to deck surface with mounting flange (Y).

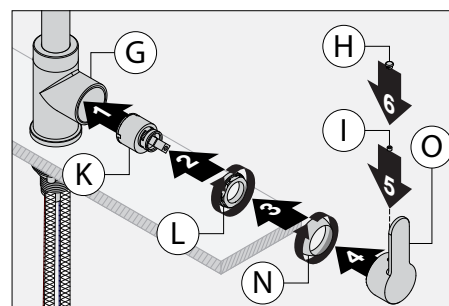
## Maintenance (for cartridge replacement)



1) Remove plug button (H), set screw (I), handle (O), collar (N), compression nut (L) and cartridge (K) from faucet body (G).



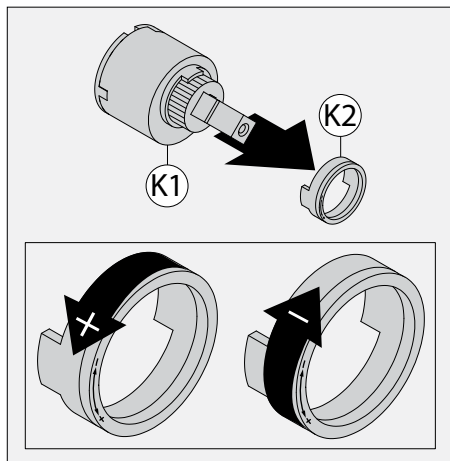
2) Inspect cartridge (K) for debris and replace cartridge if necessary. Align pegs on cartridge (K) with holes in faucet body (G) as shown above.



3) Replace cartridge (K), compression nut (L), collar (N), handle (O), set screw (I) and plug button (H).

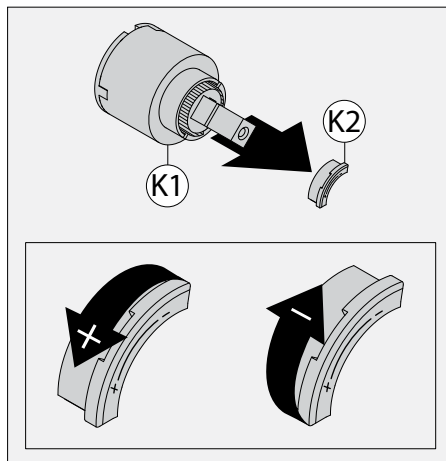
## Cartridge Temperature Limit Stop Instructions

### FOR NEW INSTALLATIONS



1) Remove limit stop (K2) from cartridge (K1). Turn limit stop counterclockwise to allow full handle turn to the hot position. Turn limit stop clockwise to limit handle turn to the hot position.

### FOR REPLACING KN-4 CARTRIDGE



2) Remove limit stop (K2) from cartridge (K1). Turn limit stop counterclockwise to allow full handle turn to the hot position. Turn limit stop clockwise to limit handle turn to the hot position.

## Troubleshooting Chart

| Problem                          | Cause  | Solution  |
|----------------------------------|--|---|
| Flow is irregular.               | Accumulation of sediment in spray wand.                      | Remove and clean spray wand (J). Replace spray wand if necessary.   |
| Same as above.                   | Accumulation of sediment in cartridge.                       | Remove and clean cartridge (K). See Maintenance section (page 4). Replace cartridge if necessary.                                 |
| Handle is sticking to cartridge. | Same as above.   | Same as above.  |
| Handle is loose.                 | Set screw has loosened.                                      | Tighten set screw (I).  |
| Finish is spotting.              | Elements in water supply may cause water staining on finish. | Clean finished trim area with a soft cloth using mild soap and water or a non-abrasive cleaner and then quickly rinse with water. |