

# Location:



**SYMMONS® Elm®**

SLS-5510-1.0, SLS-5512-1.0, SLS5512

Lavatory Faucet

## Specification Submittal



### Model Numbers

- ☐ SLS-5512-1.0 Lavatory Faucet with pop-up drain assembly
- ☐ SLS-5510-1.0 Lavatory Faucet only
- ☐ SLS5512 Lavatory Faucet with push pop-up drain assembly

### Options / Modifications

Append appropriate -suffix to model number

- ☐ -0.5-NA 0.5 gpm (1.9 L/min) non-aerated laminar flow outlet
- ☐ -DP4 4 inch deck plate

### Finish Options / Modifications

Append appropriate -suffix to model number

- ☐ -STN Satin Nickel
- ☐ -SBZ Seasoned Bronze
- ☐ -MB Matte Black finish
- ☐ -BBZ Brushed Bronze finish

### Feature Highlights

- Single post round lavatory faucet with swivel lever handle
- Single hole deck mounting and optional 4 inch deck plate
- Commercial grade 1/4 turn ceramic disc valve cartridge for drip free performance
- 3/8 inch copper supply lines with 1/2 inch IPS fittings
- Aerator with standard 1.0 gpm flow rate (3.8 L/min) Optional aerator available in lower flow rates
- Metal construction
- Polished chrome finish (standard)



### Standards / Certifications

- ASME A112.18.1/CSA B125.1
- NSF/ANSI/CAN 61: Q<1, NSF/ANSI 372
- WaterSense 1.0gpm (3.8 L/min)

### Warranty

**Limited Lifetime** - to the original end purchaser in consumer/residential installations.

**10 Years** - for commercial/industrial installations. Refer to [www.symmons.com/warranty](http://www.symmons.com/warranty) for complete warranty information.



## Architectural/ Engineering Specification

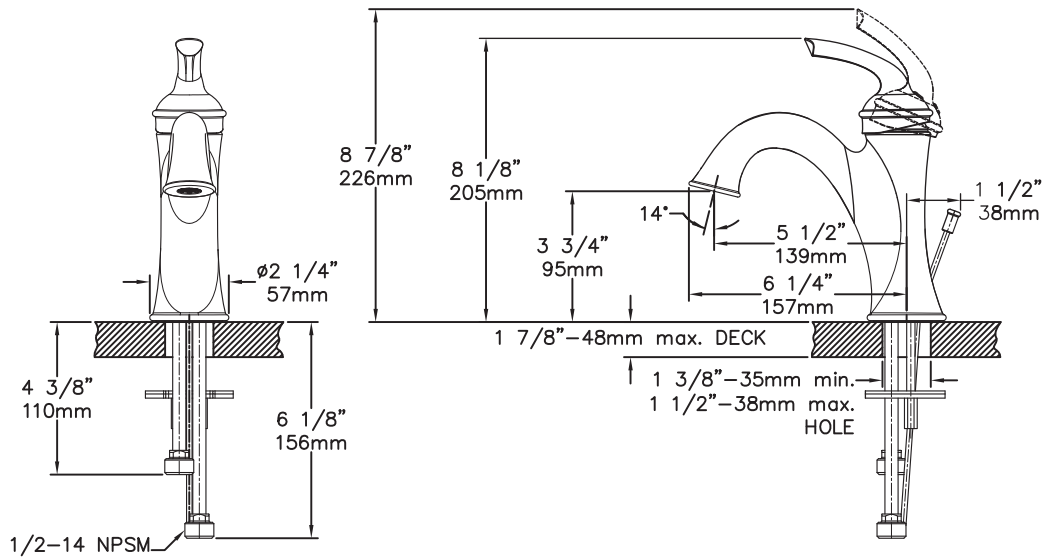
Symmons Elm \_\_\_\_\_ With Single post round lavatory faucet with swivel lever handle, Single hole deck mounting and optional 4 inch deck plate, Commercial grade 1/4 turn ceramic disc valve cartridge for drip free performance, 3/8 inch copper supply lines with 1/2 inch IPS fittings, Aerator with standard 1.0 gpm flow rate (3.8 L/min) optional aerator available in lower flow rates, Metal construction, Polished chrome finish. 10 Year Commercial Warranty. ASME A112.18.1/CSA B125.1, NSF/ANSI/CAN 61: Q<1, NSF/ANSI 372, WaterSense 1.0 gpm(3.8 L/min), complaint. Available options include: "-0.5-NA - 0.5 gpm (1.9 L/min) non-aerated laminar flow outlet", "-DP4 - 4 inch deck plate", "-STN - Satin nickel", "-SBZ - Seasoned Bronze", "-MB - Matte Black finish", "-BBZ - Brushed Bronze finish".



**SYMMONS® Elm®**

SLS-5510-1.0, SLS-5512-1.0, SLS5512

**Dimensions** Elm Single Handle Lavatory Faucet, SLS-5512-1.0  
*Faucet with copper supply tubes*



**Dimensions** Elm Single Handle Lavatory Faucet, SLS-5510-1.0  
*Faucet with copper supply tubes*

