

SYMMONS® Sereno™

Roman Tub Faucet SRT-4372

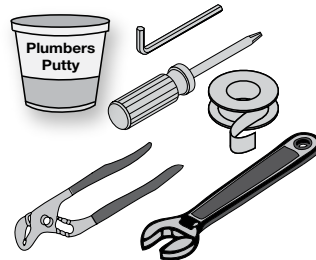
Installation and Service Instructions



Model Numbers

SRT-4372 Faucet with Handspray

Tools & Materials




Need Help?

Symmons customer service:

(800) 796-6667, (781) 848-2250

Email: customerservice@symmons.com

Monday - Friday 8:00 am - 7:00 pm EST

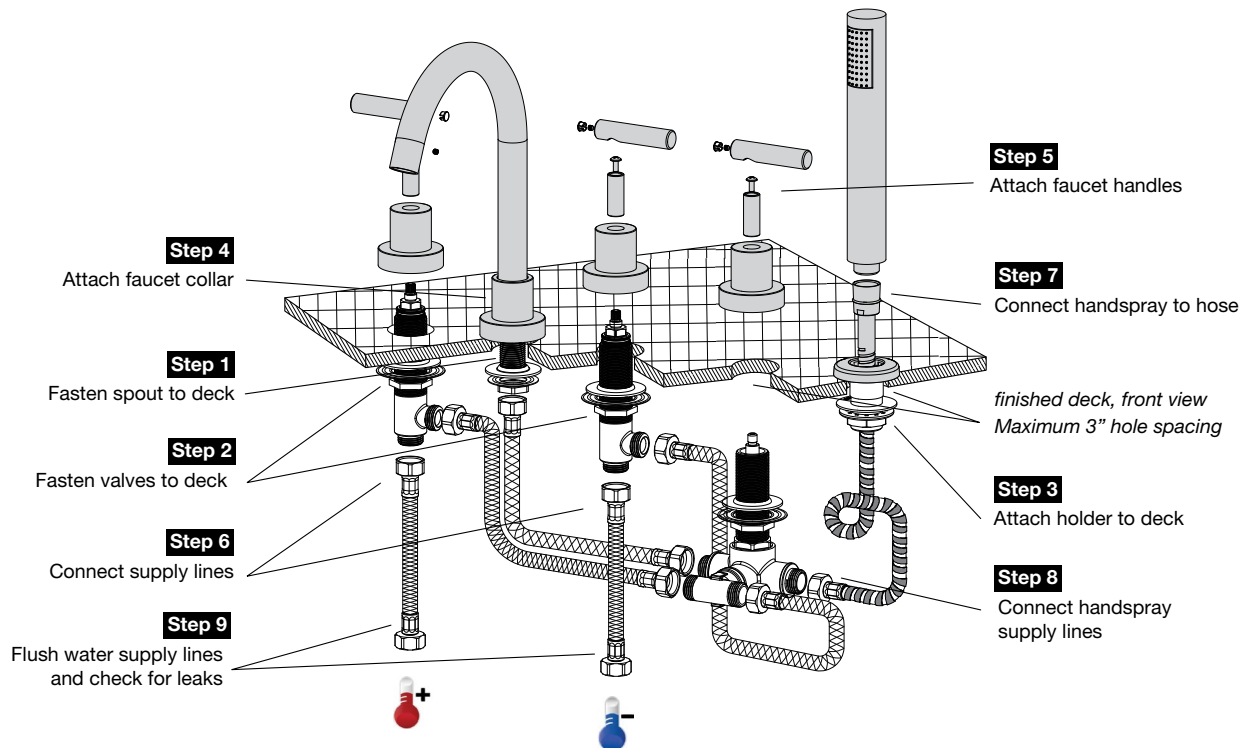
 www.symmons.com/service

- Technical help
- Product information
- Warranty policy.

Finish Options

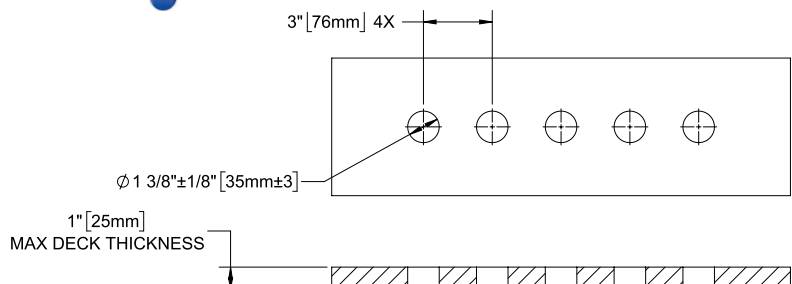
- STN Satin Nickel finish
- Chrome (standard finish)

Quick Install Guide Sereno Roman Tub Faucet

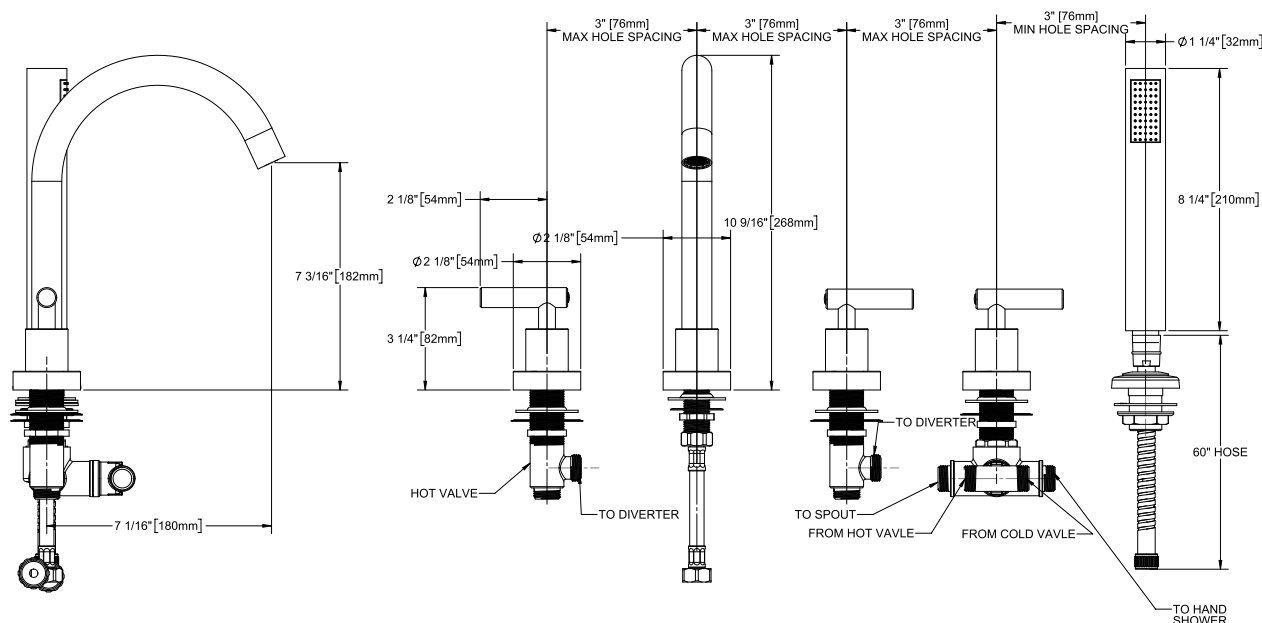


Installation notes:

- 1) Apply plumber tape to threaded connections as shown in illustration.
- 2) DO NOT use plumber putty or plumber tape on fittings with face seal washers or o-ring seals.
- 3) DO NOT OVERTIGHTEN fittings with face seal washers or o-ring seals.

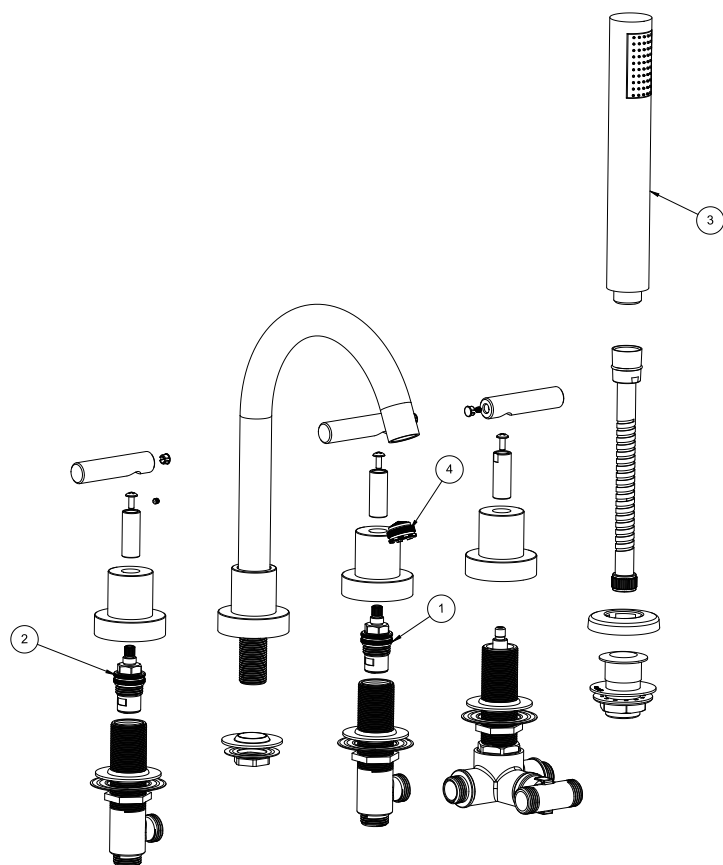


Dimensions *Sereno Roman Tub Faucet*



Note: Dimensions subject to change without notice.

Repair Parts *Sereno Roman Tub Faucet*



#	Description	Part Number
1	Cartridge, COLD	RT-02817-RL1
2	Cartridge, HOT	RT-02817-RL2
4	Shower Wand	432W

Ordering replacement parts:

Call Symmons customer service at (800) 796-6667 Monday-Friday, 7:30 am - 6:00 pm EST or check our website at www.symmons.com for a list of Symmons distributors.

Note: When ordering replacement parts for faucets with an optional decorative finish, append appropriate three letter finish suffix code to part numbers marked with an asterisk ().

WARNING: This product can expose you to chemicals including lead, which is known to the state of California to cause cancer, birth defects, or other reproductive harm. For more information, go to www.P65Warnings.ca.gov.

Symmons Industries, Inc. ■ 31 Brooks Drive ■ Braintree, MA 02184 ■ Phone: (800) 796-6667 ■ Fax: (800) 961-9621
Copyright © 2021 Symmons Industries, Inc. ■ symmons.com ■ gethelp@symmons.com ■ ZV-575 REV A ■ 012821