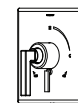


# S3691TRM

## Shower Trim

### Specification Submittal

Location:



#### Model Numbers

- ☐ **S3691TRM**  
Shower Trim
- Valve Options:**  
-S261 Series Temptrol® VersaFlex™ Shower Valve with TRM modifier  
-S161 Series Temptrol VersaFlex Shower Valve requires TC modifier

#### Feature Highlights

- Duro Shower Trim.
- Requires Temptrol VersaFlex Pressure-Balancing Shower Valve.
- Integral volume control.
- Metal lever handle.
- Single-mode HydroMersion™ showerhead.
- Standard 2.0 gpm (7.6 L/min) flow restrictor.
- Components shall be metal and nonmetal construction, plated in standard Polished Chrome finish.

#### Compliance

- ASME® A112.18.1/CSA® B125.1
- WaterSense® 1.5 gpm (5.7 L/min) 2.0 gpm (7.6 L/min)
- Lever handle meets ADA requirements for operation

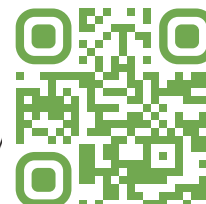


#### Options/Modifications

- ☐ **15** 1.5 gpm (5.7 L/min) flow restrictor
- ☐ **L1** Less showerhead
- ☐ **L7** Less handle
- ☐ **BBZ** Brushed Bronze finish
- ☐ **MB** Matte Black finish
- ☐ **STN** Satin Nickel finish
- ☐ **TC** Test Cap Trim (includes TA-10™ & T-12A) used with S161 Series Temptrol VersaFlex Shower Valve

#### Warranty

**Limited Lifetime** - for residential installations.  
**10 Years** - for commercial/industrial installations.  
Refer to [www.symmons.com/warranty](http://www.symmons.com/warranty) for complete warranty information.



#### SKU Builder

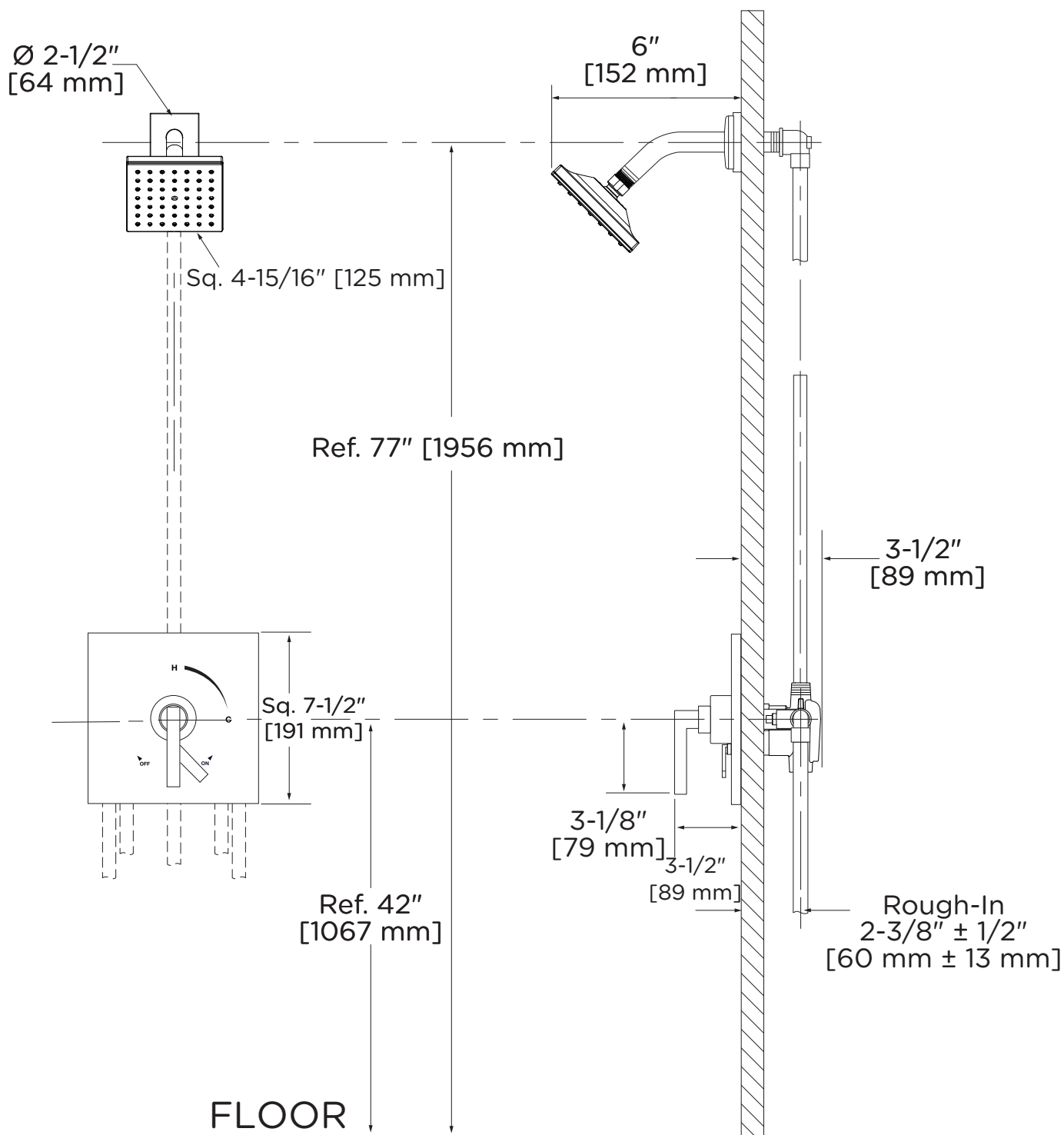
Series	Finish	Modifier	Flow Rate	Trim (required)	Test Cap	Final SKU
S3691	STN		15	TRM		S3691STN15TRM
S3691	MB	L7		TRM	TC	S3691MBL7TRMTC

**Notes:** No more than two modifiers (L1-L7) permitted when ordering. Modifiers will list in numerical order.

#### Architectural/ Engineering Specification

Symmons Duro Shower Trim \_\_\_\_\_ Includes Duro Shower Trim for Temptrol VersaFlex Pressure-Balancing Shower Valve. Features integral volume control, metal lever handle, single-mode HydroMersion showerhead, and 2.0 gpm (7.6 L/min) flow restrictor. Components shall be metal and nonmetal construction, plated in standard Polished Chrome finish. 10-Year Commercial Warranty. ASME A112.18.1/CSA B125.1, WaterSense 1.5 gpm (5.7 L/min) and 2.0 gpm (7.6 L/min) compliant. Lever handle meets ADA requirements for operation. Available options: 15 = 1.5 gpm (5.7 L/min) flow restrictor, L1 = Less showerhead, L7 = Less handle, TC = Test Cap Trim, BBZ = Brushed Bronze finish, MB = Matte Black finish, and STN = Satin Nickel finish.

## Dimensions



### Notes:

- 1) Valve body and piping not included and shown as reference only.
- 2) Plaster shield (p/n T-176) for drywall, plaster, or other type walls 1/2" or greater.
- 3) All dimensions measured from nominal rough-in.
- 4) Dimensions subject to change without notice.