

3393TRM

Location:

Hand Shower Trim

## Specification Submittal

### Model Numbers

- ☐ **3393TRM**  
Hand Shower Trim

#### Valve Options:

- 261 Series Temptrol® Shower Valve with TRM modifier
- 161 Series Temptrol Shower Valve requires TC modifier

### Feature Highlights

- Solarity Hand Shower Trim.
- Requires Temptrol Pressure-Balancing Shower Valve.
- Metal lever handle.
- 30" slide bar for hand shower wand.
- Dual checks for backflow protection.
- 60" flexible metal hose.
- Single-mode HydroMersion® hand shower wand with Non-Positive Shutoff (NPSO).
- Standard 2.0 gpm (7.6 L/min) flow restrictor.
- Components shall be metal and nonmetal construction, plated in standard Polished Chrome finish.

### Compliance

- ASME® A112.18.1/CSA® B125.1
- WaterSense® 1.5 gpm (5.7 L/min) 2.0 gpm (7.6 L/min)
- Lever handle meets ADA requirements for operation
- CALGreen® 1.5 gpm (5.7 L/min)



### Options/Modifications

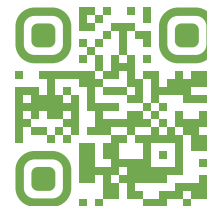
- ☐ **15** 1.5 gpm (5.7 L/min) flow restrictor
- ☐ **L2** Less hand shower wand
- ☐ **L7** Less handle
- ☐ **TC** Test Cap Trim (includes TA-10® & T-12A) *used with 161 Series Temptrol Shower Valve*
- ☐ **MB** Matte Black finish
- ☐ **STN** Satin Nickel finish

### Warranty

**Limited Lifetime** - for residential installations.

**10 Years** - for commercial/industrial installations.

Refer to [www.symmons.com/warranty](http://www.symmons.com/warranty) for complete warranty information.



### SKU Builder

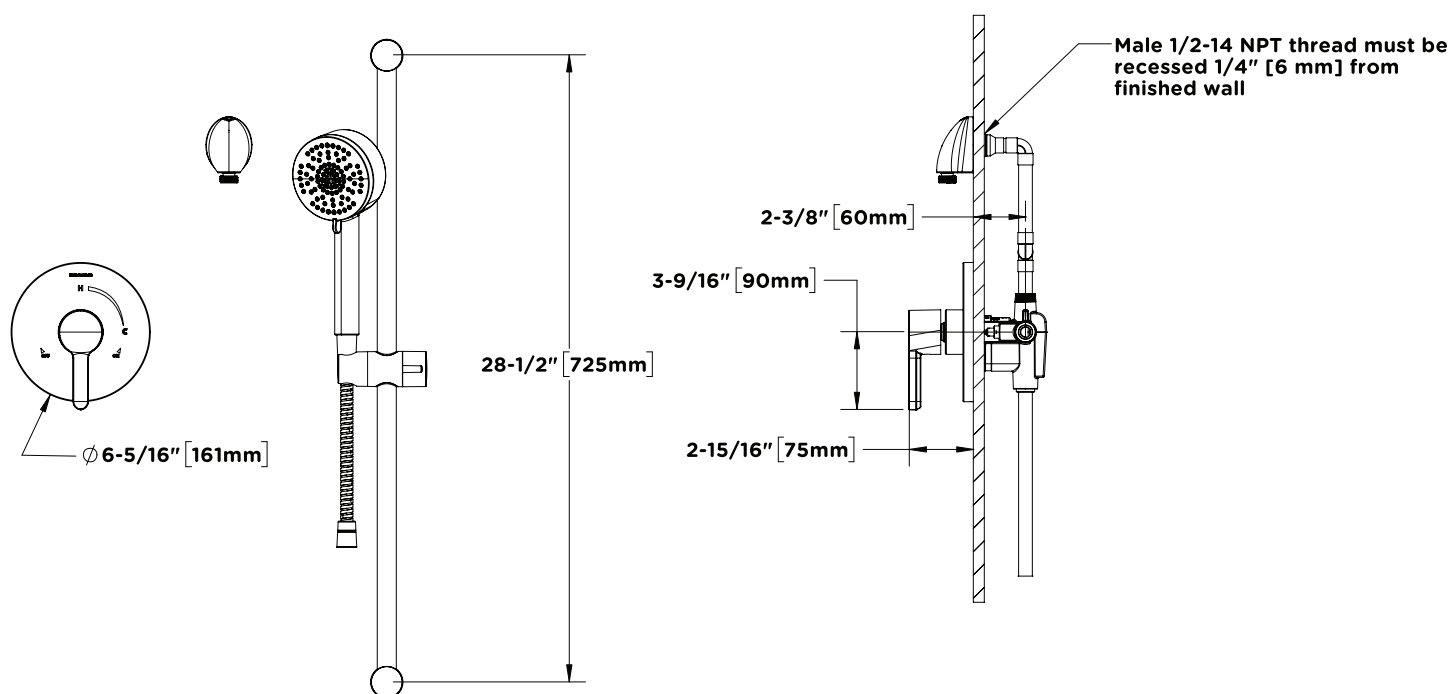
Series	Finish	Modifier	Flow Rate	TRM (required)	TC	Final SKU
3393	STN		15	TRM		3393STN15TRM
3393	MB	L2		TRM	TC	3393MBL2TRMTC

**Notes:** No more than two modifiers (L1-L7) permitted when ordering. Modifiers will list in numerical order.

### Architectural/Engineering Specification

Symmons Solarity Hand Shower Trim \_\_\_\_\_ Includes Solarity Hand Shower Trim for Temptrol® Pressure-Balancing Shower Valve. Features metal lever handle, 30" slide bar for hand shower wand, dual checks for backflow protection 60" flexible metal hose, single-mode HydroMersion hand shower wand with NPSO, and standard 2.0 gpm (7.6 L/min) flow rate. Components shall be metal and nonmetallic construction, plated in standard Polished Chrome finish. 10-Year Commercial Warranty. ASME A112.18.1/CSA B125.1, WaterSense 1.5 gpm (5.7 L/min) and 2.0 gpm (7.6 L/min) compliant. Lever handle meets ADA requirements for operation. 1.5 gpm option meets CALGreen requirements. Available options: 15 = 1.5 gpm (5.7 L/min) flow restrictor, L2 = Less hand shower wand, L7 = Less handle, TC = Test Cap Trim, MB = Matte Black finish, and STN = Satin Nickel finish.

## Dimensions



### Notes:

- 1) Valve body and piping not included and shown as reference only.
- 2) Plaster shield (p/n T-176) for drywall, plaster, or other type walls  $\frac{1}{2}''$  or greater.
- 3) All dimensions measured from nominal rough-in.
- 4) Dimensions subject to change without notice.