

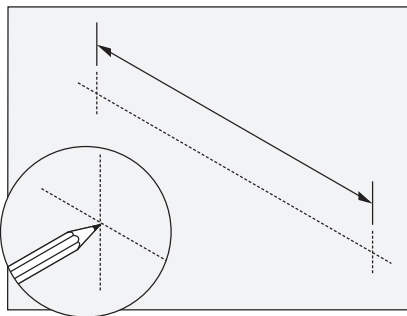
Accessories Operation and Maintenance Manual

NOTICE:

ALL SINGLE-POST ACCESORIES MUST BE SECURED INTO A STUD OR BACKER BOARD

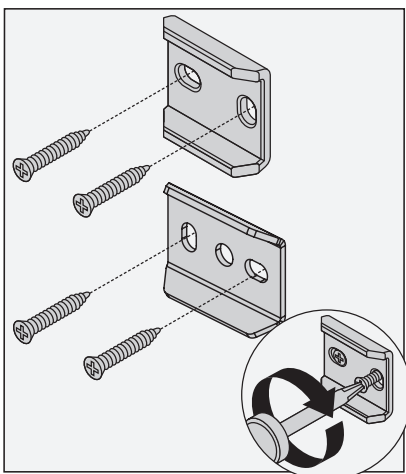
Installation Instructions

- 1) Measure and mark centerlines for mounting bracket installation.

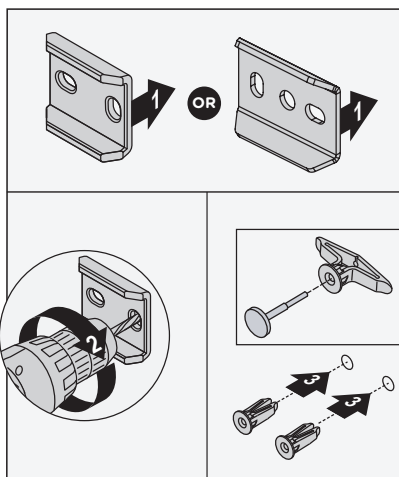

Note (for Towel Bars and Towel Shelves only):

Use dimensions from product submittal and make sure both centerline marks are level.

- 3) With mounting brackets in position, secure to wall using screws. Use bracket as screw template.

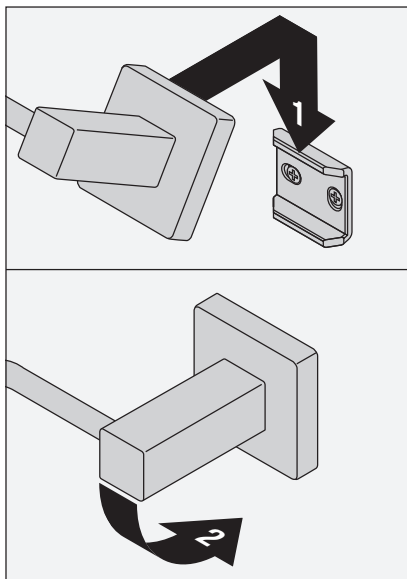


- 2a) **Drywall Option:** Place mounting brackets into preferred position. Using brackets as a guide, carefully drill 5/16" holes into wall. Remove brackets and install anchors.

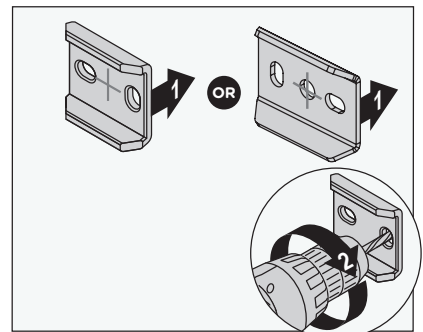

Note:

For plaster walls 1/2" thick or less, insert toggle tool into toggle to secure behind wall prior to installing accessory trim.

- 4) Hang top of accessory on mounting bracket. Lower into position.

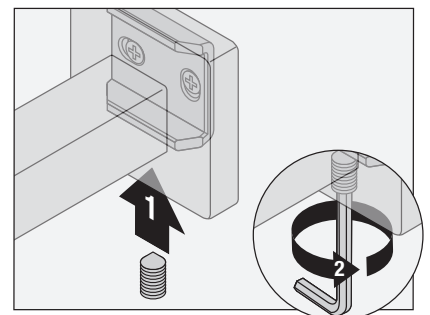


- 2b) **Stud Option:** Center bracket on centerline. Using brackets as a guide, carefully drill 3/16" holes into wall.



- 5) Secure with set screw.

Note: The set screw should be snug, but do not overtighten



Warranty

Limited Lifetime - for residential installations.
10 Years - for commercial/industrial installations.
Refer to www.symmons.com/warranty for complete warranty information.



Product Care

Clean finished trim area with a soft cloth using mild soap and water or a non-abrasive cleaner, and then quickly rinse with water.

Troubleshooting Chart

Problem	Cause	Solution
Finish is spotting.	Elements in water supply may cause water staining on finish.	Clean finished trim area with a soft cloth using mild soap and water or a non-abrasive cleaner, and then quickly rinse with water.