

Location:



S-5302-TRM, S5302TRMTC

Tub/Shower Trim

Specification Submittal




Feature Highlights

- Museo Tub/Shower Trim
- Requires Temptrol® Pressure Balancing Tub/Shower Valve
- Integral diverter control
- Metal lever handle
- 7-1/16" non-diverter tub spout
- 1 mode showerhead
- 2.0 gpm (7.6 L/min) flow restrictor
- Components shall be metal and nonmetallic construction, plated in standard Polished Chrome finish
- Available with TA-10 flow control spindle and T-12A cap assembly for Temptrol valve bodies installed with Test Cap (order p/n S5302TRMTC)

Model Numbers

- ☐ **S-5302-TRM**
Tub/Shower Trim with integral diverter control, Temptrol Pressure Balancing Tub/Shower Valve ordered separately
- ☐ **S5302TRMTC**
Tub/Shower Trim with integral diverter control, TA-10 flow control spindle and T-12A cap assembly, must order Temptrol valve with Test Cap

Options/Modifications

- ☐ **-1.5**  1.5 gpm (5.7 L/min) flow restrictor
- ☐ **-L1** Less showerhead
- ☐ **-STN** Satin Nickel finish
- ☐ **-BLK** Polished Graphite

Note: Append appropriate -suffix to model number.

Compliance

- ASME A112.18.1/CSA B125.1



Warranty

Limited Lifetime - to the original end purchaser in consumer/residential installations.

10 Years - for commercial/industrial installations. Refer to www.symmons.com/warranty for complete warranty information.

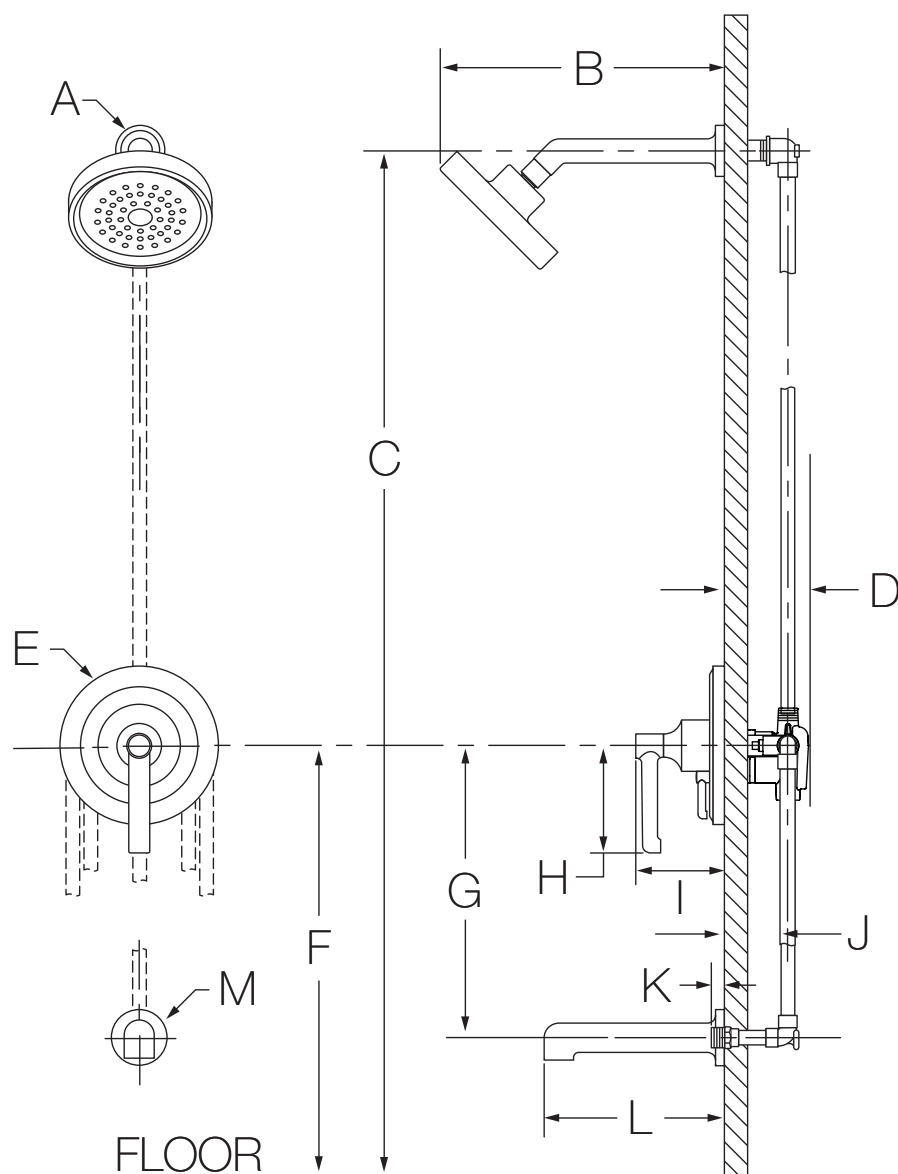


Architectural/ Engineering Specification

Symmons _____ With Museo Tub/Shower Trim, requires Temptrol® pressure balancing shower valve, Integral diverter control, metal lever handle, 7-1/16" non-diverter tub spout, 1 mode showerhead, 2.0 gpm (7.6 L/min) flow restrictor, components shall be metal and nonmetallic construction, plated in standard Polished Chrome finish, available with TA-10 flow control spindle and T-12A cap assembly for Temptrol valve bodies installed with Test Cap (order p/n 5401TRMTC). 10 Year commercial Warranty. ASME A112.18.1/CSA B125.1, Complaint. Available options include: "1.5 - 1.5 gpm (5.7 L/min) flow restrictor", "L1 - Less showerhead", "STN - Satin nickel finish", "BLK - Polished Graphite".

S-5302-TRM, S5302TRMTC

Dimensions



Measurements

A	Ø 2", 51 mm
B	11-1/8", 283 mm
C	Ref. 77", 1956 mm
D	3-1/2", 89 mm
E	Ø 6-1/4", 159 mm
F	Ref. 32", 813 mm
G	Ref. 12", 305 mm
H	3-1/4", 83 mm
I	3-3/4", 95 mm
J	Rough-in 2-3/8" ± 1/2", 60 mm ± 13 mm
K	Male 1/2-14 NPT fitting must protrude 1/2" (13 mm) from finished wall
L	7-1/16", 179 mm
M	Ø 2-1/4" 57 mm

Notes:

- 1) Valve body and piping not included and shown as reference only.
- 2) Plaster shield (p/n T-176) for dry wall, plaster or other type walls 1/2" or greater.
- 3) All dimensions measured from nominal rough-in (see J as reference).
- 4) Dimensions subject to change without notice.