

Tommie Hollywood Hotel **Los Angeles, CA**

Bar Faucet

VERSION

A



- Design & Dimensions subject to change
- Consult your Symmons Sales Representative for Timeline

REQUIRES:

"THIS DOCUMENT CONTAINS PROPRIETARY INFORMATION OF SYMMONS INDUSTRIES, INC. AND NEITHER THIS DOCUMENT OR ANY OF SAID PROPRIETARY INFORMATION SHALL BE PUBLISHED, REPRODUCED, COPIED, DISCLOSED OR USED FOR ANY PURPOSE WITHOUT THE EXPRESS WRITTEN PERMISSION OF A DULY AUTHORIZED REPRESENTATIVE OF SYMMONS INDUSTRIES, INC."

PRODUCT NAME:
 Bar Faucet

ADDITIONAL NOTE:
 FLOW RATE: 1.5 GPM

DATE
 1-15-2019

SYMMONS MODEL#
 SPB-3510-BBZ-1.5

VERSION:
 A

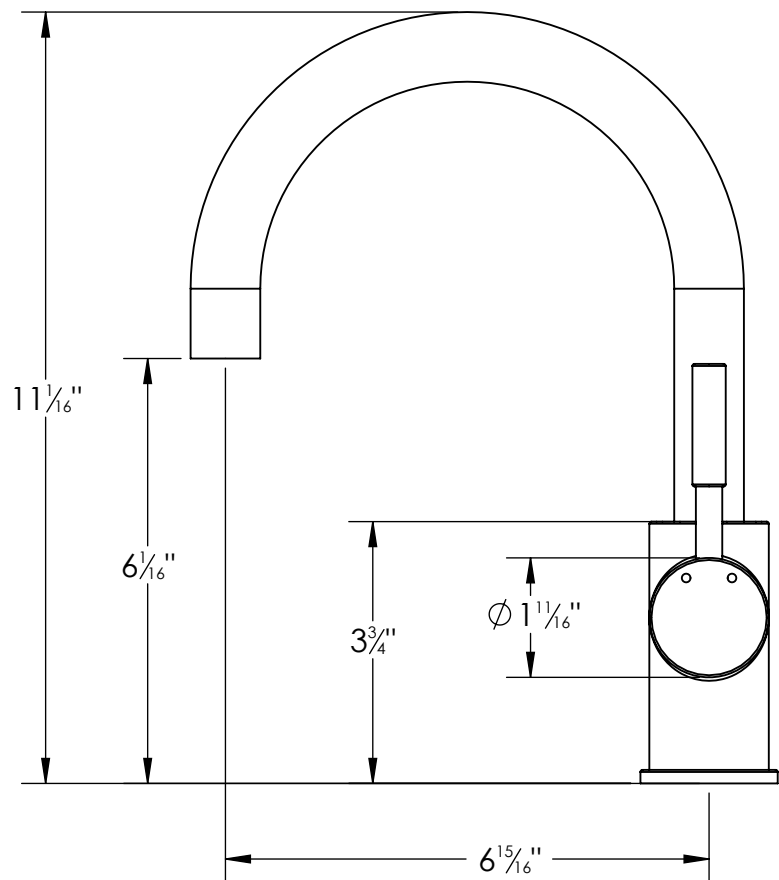
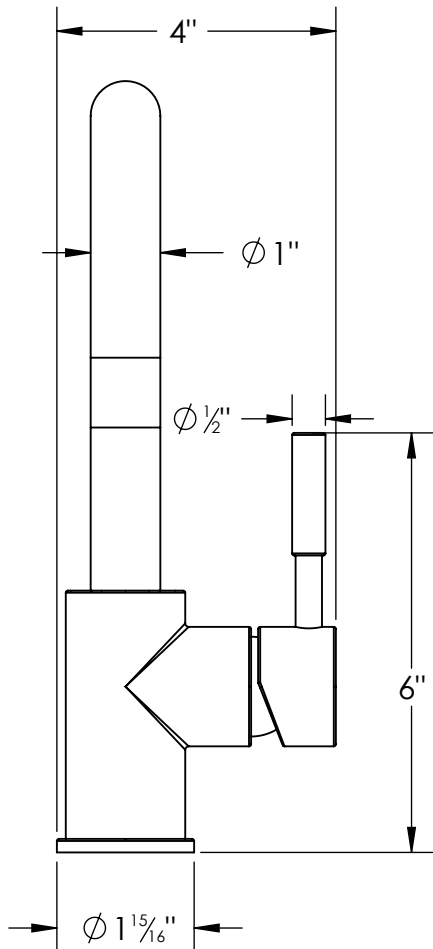
FINISH:
 Brushed Bronze

Approved by:

Approval Date:

Approval Signature:


 SYMMONS INDUSTRIES
 31 BROOKS DRIVE BRAINTREE, MA 02184
 1-800-SYMMONS www.symmons.com



- Design & Dimensions subject to change
- Consult your Symmons Sales Representative for Timeline

REQUIRES:

"THIS DOCUMENT CONTAINS PROPRIETARY
 INFORMATION OF SYMMONS INDUSTRIES, INC. AND
 NEITHER THIS DOCUMENT OR ANY OF SAID
 PROPRIETARY INFORMATION SHALL BE PUBLISHED,
 REPRODUCED, COPIED, DISCLOSED OR USED FOR
 ANY PURPOSE WITHOUT THE EXPRESS WRITTEN
 PERMISSION OF A DULY AUTHORIZED
 REPRESENTATIVE OF SYMMONS INDUSTRIES, INC."

PRODUCT NAME:
 Bar Faucet

ADDITIONAL NOTE:
 FLOW RATE: 1.5 GPM

DATE
 1-15-2019

SYMMONS MODEL#
 SPB-3510-BBZ-1.5

VERSION:
 A

FINISH:
 Brushed Bronze

Approved by:

Approval Date:

Approval Signature:


 SYMMONS INDUSTRIES
 31 BROOKS DRIVE BRAINTREE, MA 02184
 1-800-SYMMONS www.symmons.com