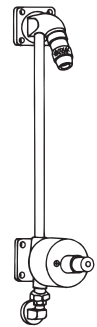




SYMMONS® ShowerOff®



3-330

ShowerOff® Exposed Shower System

Operation & Maintenance Manual

Warranty

Limited Lifetime - for residential installations.

10 Years - for commercial/industrial installations.

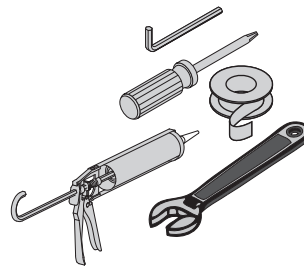
Refer to www.symmons.com/warranty for complete warranty information.



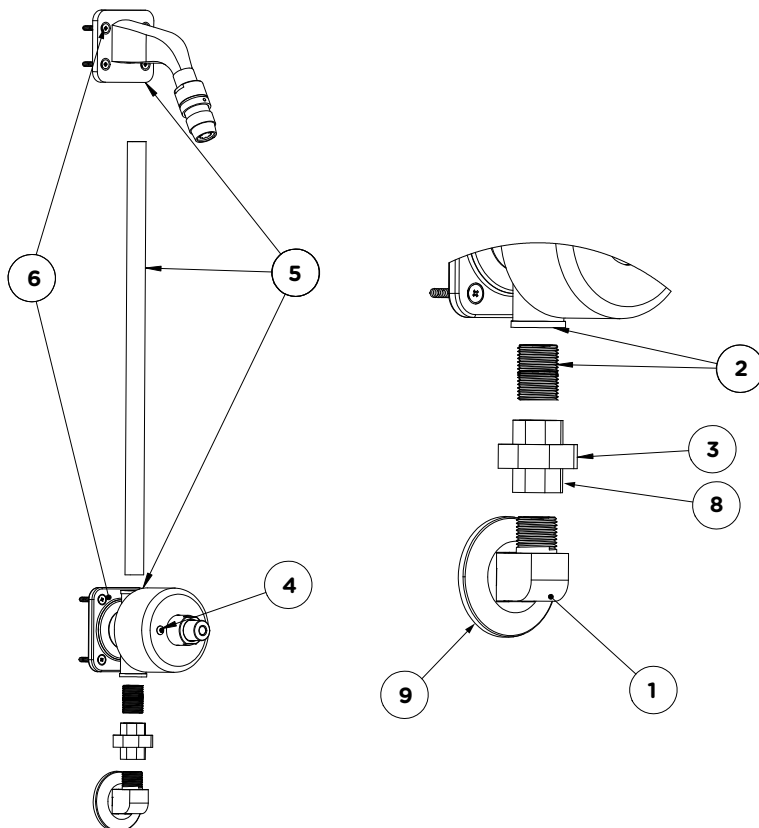
Product Care

Clean finished trim area with a soft cloth using mild soap and water or a non-abrasive cleaner and then quickly rinse with water.

Tools Required



Installation



1. Thread elbow flange into wall.
2. Apply plumber's tape to nipple and screw into bottom of valve body.
3. Detach union and screw the top of it into the nipple and the bottom of it into the elbow flange. Apply plumber's tape to all threads involved.
4. Use provided bit to remove dome assembly.
5. Assemble showerhead and valve together with provided riser.
6. Mark wall and install wall anchors (not supplied).
7. Screw showerhead and valve into wall with provided screws. *If -A or -B model are used, install bracket behind wall and attach with supplied hardware.*
8. Attach flange and valve together with union.
9. Apply silicone between wall and elbow.