



SYMMONS®

Location: Temptrol® Commercial

C-96-2-X, C-96-2-TRM & C962TRMTC

Tub/Shower System & Trim


Specification Submittal



Model Numbers

- ☐ **C-96-2-X** Tub/Shower System with Temptrol Pressure Balancing Tub/Shower Valve
- ☐ **C-96-2-TRM** Tub/Shower Trim, Temptrol Pressure Balancing Tub/Shower Valve ordered separately
- ☐ **C962TRMTC** Tub/Shower Trim with TA-10 flow control spindle and T-12A cap assembly, must order Temptrol valve with Test Cap

Options/ Modifications

- ☐ **LAM**  **Metal finish insert handle**
- ☐ **L/HD** **Shower head not included Includes showerhead arm and flange only**
- ☐ **L/HDL** **Handle not included Includes showerhead arm and flange only**
- ☐ **Delete Suffix X** **Less integral service stops**
- ☐ **SS** **Slip spout**
- ☐ **VP** **Vandal resistant escutcheon screws in place of standard screws**
- ☐ **L1** **Less showerhead**
- ☐ **L4** **Less head, arm and flange**
- ☐ **L7** **Less handle**

Note: Append appropriate -suffix to model number.

Feature Highlights

- Temptrol Commercial Tub/Shower System or Trim
- Requires Temptrol® Pressure Balancing Tub/Shower Valve (included with C-96-2-X)
- Integral service stops allow water shutoff at valve for service (included with C-96-2-X)
- Adjustable stop screw to limit hand turn (included with C-96-2-X)
- Metal lever handle
- 5-1/2" diverter tub spout
- 1 mode showerhead
- 2.0 gpm (7.6 L/min) flow restrictor
- Components shall be metal and nonmetallic construction, plated in standard Polished Chrome finish
- Available with TA-10 flow control spindle and T-12A cap assembly for Temptrol valve bodies installed with Test Cap (order p/n C962TRMTC)

Compliance

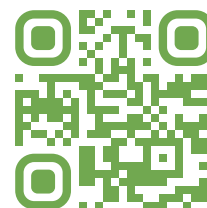
- ASME A112.18.1/CSA B125.1



Warranty

Limited Lifetime - to the original end purchaser in consumer/residential installations.

10 Years - for commercial/industrial installations. Refer to www.symmons.com/warranty for complete warranty information.



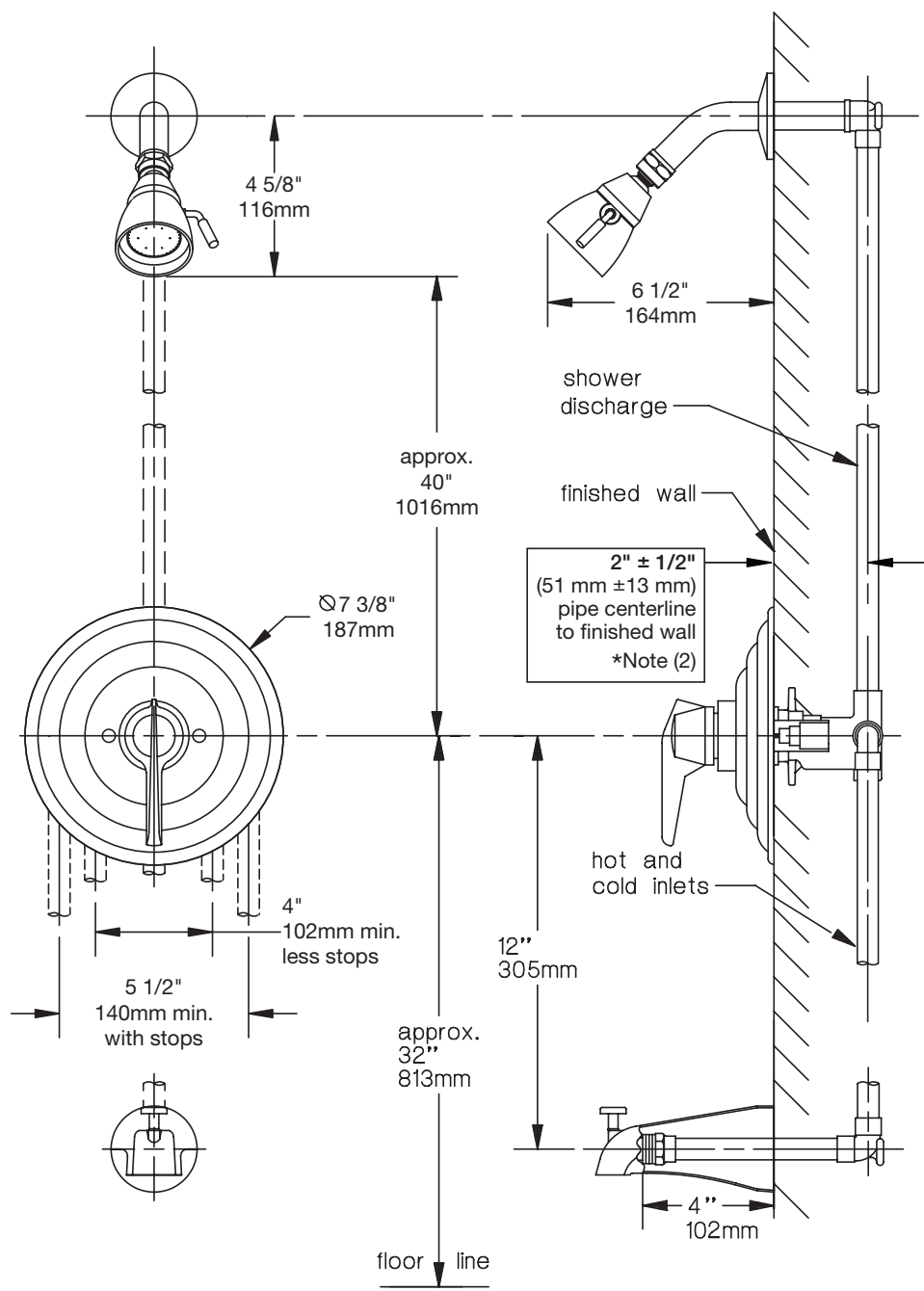
Architectural/ Engineering Specification

Symmons Temptrol and Commercial Tub and Shower System and Trim _____ Includes Temptrol Commercial Tub/Shower System or Trim, Requires Temptrol® Pressure Balancing Tub/Shower Valve (included with C-96-2-X), Integral service stops allow water shutoff at valve for service (included with C-96-2-X), Adjustable stop screw to limit hand turn (included with C-96-2-X), Metal lever handle, 5-1/2" diverter tub spout, 1 mode showerhead, 2.0 gpm (7.6 L/min) flow restrictor, Components shall be metal and nonmetallic construction, plated in standard Polished Chrome finish, Available with TA-10 flow control spindle and T-12A cap assembly for Temptrol valve bodies installed with Test Cap (order p/n C962TRMTC). 10 Year Commercial Warranty. ASME A112.18.1/CSA B125.1 compliant. Available options: "LAM - Metal finish insert handle", "L/HD - Shower head not included Includes showerhead arm and flange only", "L/HDL - Handle not included Includes showerhead arm and flange only", "Delete Suffix X - Less integral service stops", "SS - Slip spout", "VP- Vandal resistant escutcheon screws in place of standard screws", "L1 - Less showerhead", "L4 - Less head, arm and flange", "L7 - Less handle".

SYMMONS® Temptrol®
Commercial

C-96-2-X, C-96-2-TRM & C962TRMTC

Dimensions



Notes:

- 1) Valve body and piping not included and shown as reference only.
- 2) Plaster shield (p/n T-176) for dry wall, plaster or other type walls 1/2" or greater.
- 3) All dimensions measured from nominal rough-in.
- 4) Dimensions subject to change without notice.