



**SYMMONS® Oak®**

562SA  
Square Shower Arm and Flange  
**Specification Submittal**

Location:



**Model Numbers**

☐ **562SA** Oak Shower Arm and Flange

**Options/Modifications**

☐ **BBZ** Brushed Bronze finish

☐ **MB** Matte Black finish

☐ **STN** Satin Nickel finish

**Note:** Append appropriate suffix to model number.

**Compliance**

• ASME A112.18.1/CSA B125.1.



**Feature Highlights**

- Wall mounted long shower arm is 7-7/16" in length.
- Includes square shower arm flange.
- Components constructed from brass.
- Shower arm is plated in standard Polished Chrome finish.

**Warranty**

**Limited Lifetime** - for residential installations.

**10 Years** - for commercial/industrial installations.

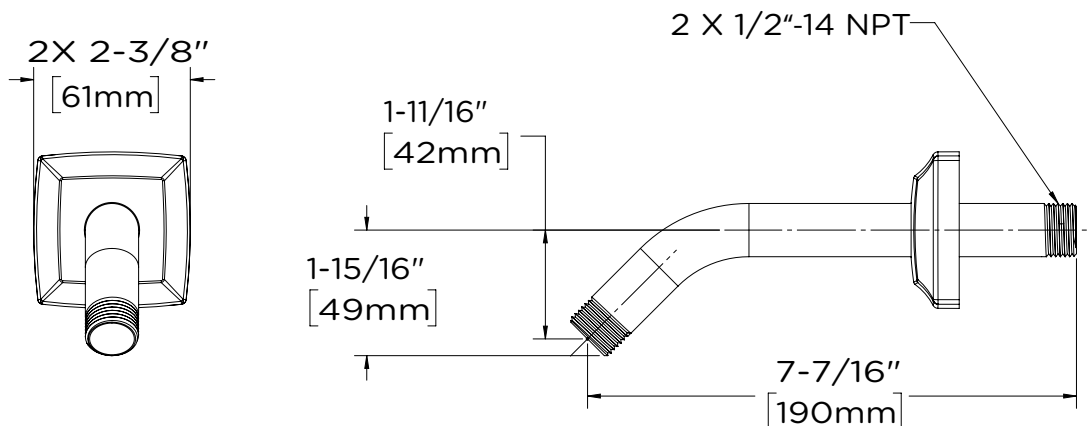
Refer to [www.symmons.com/warranty](http://www.symmons.com/warranty) for complete warranty information.



**Architectural/Engineering Specification**

Symmons Oak Square Shower Arm and Flange \_\_\_\_\_ Features includes Wall mounted long shower arm is 7-7/16" in length, includes square shower arm flange. Components constructed from brass, shower arm is plated in standard Polished Chrome finish. 10-Year Commercial Warranty. ASME A112.18.1/CSA B125.1 compliant. Available options: BBZ = Brushed Bronze finish, MB = Matte Black finish, and STN = Satin Nickel finish.

**Dimensions**



Note:  
Dimensions are subject to change without notice.