






Location:

S-4202-TRM, S4202TRMTC

Tub/Shower Trim

Specification Submittal



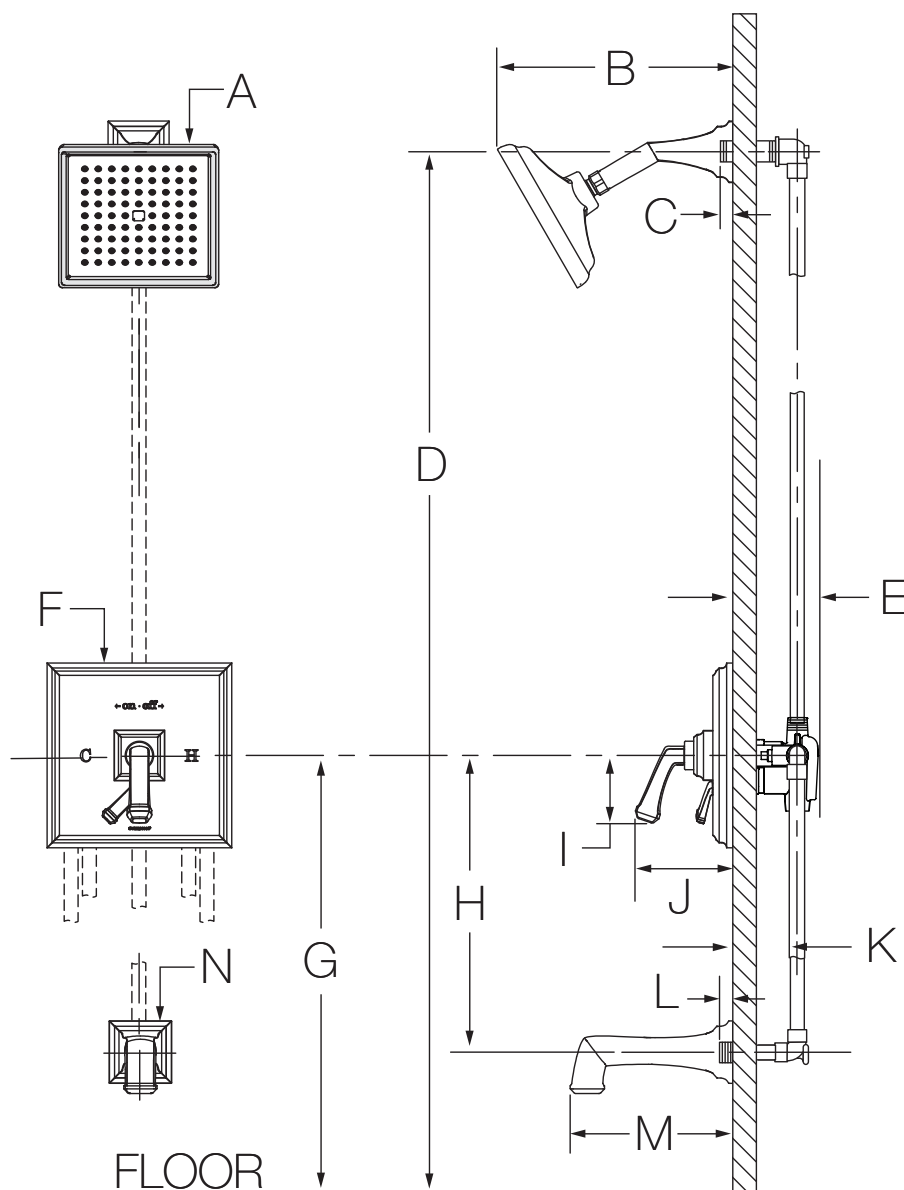
Model Numbers		Feature Highlights
<input type="checkbox"/> S-4202-TRM	Tub/Shower Trim with integral diverter control, Temptrol Pressure Balancing Tub/Shower Valve ordered separately	<ul style="list-style-type: none">• Oxford Tub/Shower Trim• Requires Temptrol® Pressure Balancing Tub/Shower Valve• Integral diverter control• Metal lever handle• 6-1/2" non-diverter tub spout• 1 mode showerhead• 2.0 gpm (7.6 L/min) flow restrictor• Components shall be metal and nonmetallic construction, plated in standard Polished Chrome finish• Available with TA-10 flow control spindle and T-12A cap assembly for Temptrol valve bodies installed with Test Cap (order p/n S4202TRMTC)
<input type="checkbox"/> S4202TRMTC	Tub/Shower Trim with integral diverter control, TA-10 flow control spindle and T-12A cap assembly, must order Temptrol valve with Test Cap	
Options/ Modifications		
<input type="checkbox"/> 1.5	<input checked="" type="checkbox"/> 1.5 gpm (5.7 L/min) flow restrictor	
<input type="checkbox"/> STN	Satin Nickel finish	
<input type="checkbox"/> L7	Less handle	
Note: Append appropriate -suffix to model number.		
Compliance		Warranty
<ul style="list-style-type: none">- ASME A112.18.1/CSA B125.1- WaterSense 1.5 gpm (5.7 L/min)2.0 gpm (7.6 L/min)  		<p>Limited Lifetime - to the original end purchaser in consumer/residential installations.</p> <p>10 Years - for commercial/industrial installations. Refer to www.symmons.com/warranty for complete warranty information.</p> 

Architectural/ Engineering Specification

Symmons Oxford Tub and Shower Trim _____ Includes Oxford Tub and Shower Trim, Requires Temptrol® Pressure Balancing Tub and Shower Valve, Integral diverter control, Metal lever handle, 6-1/2" non-diverter tub spout, 1 mode showerhead, 2.0 gpm (7.6 L/min) flow restrictor, Components shall be metal and nonmetallic construction, plated in standard Polished Chrome finish, Available with TA-10 flow control spindle and T-12A cap assembly for Temptrol valve bodies installed with Test Cap (order p/n S4202TRMTC). 10 Year Commercial Warranty. ASME A112.18.1/CSA B125.1, WaterSense 1.5 gpm (5.7 L/min), 2.0 gpm (7.6 L/min) compliant. Available options: "1.5 - 1.5 gpm (5.7 L/min) flow restrictor", "STN - Satin Nickel finish", "L7 - Less handle".

S-4202-TRM, S4202TRMTC

Dimensions



Measurements	
A	Sq. 6-1/2", 165 mm
B	9-5/8", 245 mm
C	1/2", 13 mm
D	Ref. 77", 1956 mm
E	3-1/2", 89 mm
F	Sq. 7-1/2", 191 mm
G	Ref. 32", 813 mm
H	Ref. 12", 305 mm
I	2-9/16", 65 mm
J	4", 102 mm
K	Rough-in 2-3/8" ± 1/2", 60 mm ± 13 mm
L	Male 1/2-14 NPT fitting must protrude 1/2" (13 mm) from finished wall
M	6-1/2", 165 mm
N	Sq. 2-1/2", 64mm

Notes:

- 1) Valve body and piping not included and shown as reference only.
- 2) Plaster shield (p/n T-176) for dry wall, plaster or other type walls 1/2" or greater.
- 3) All dimensions measured from nominal rough-in (see K as reference).
- 4) Dimensions subject to change without notice.